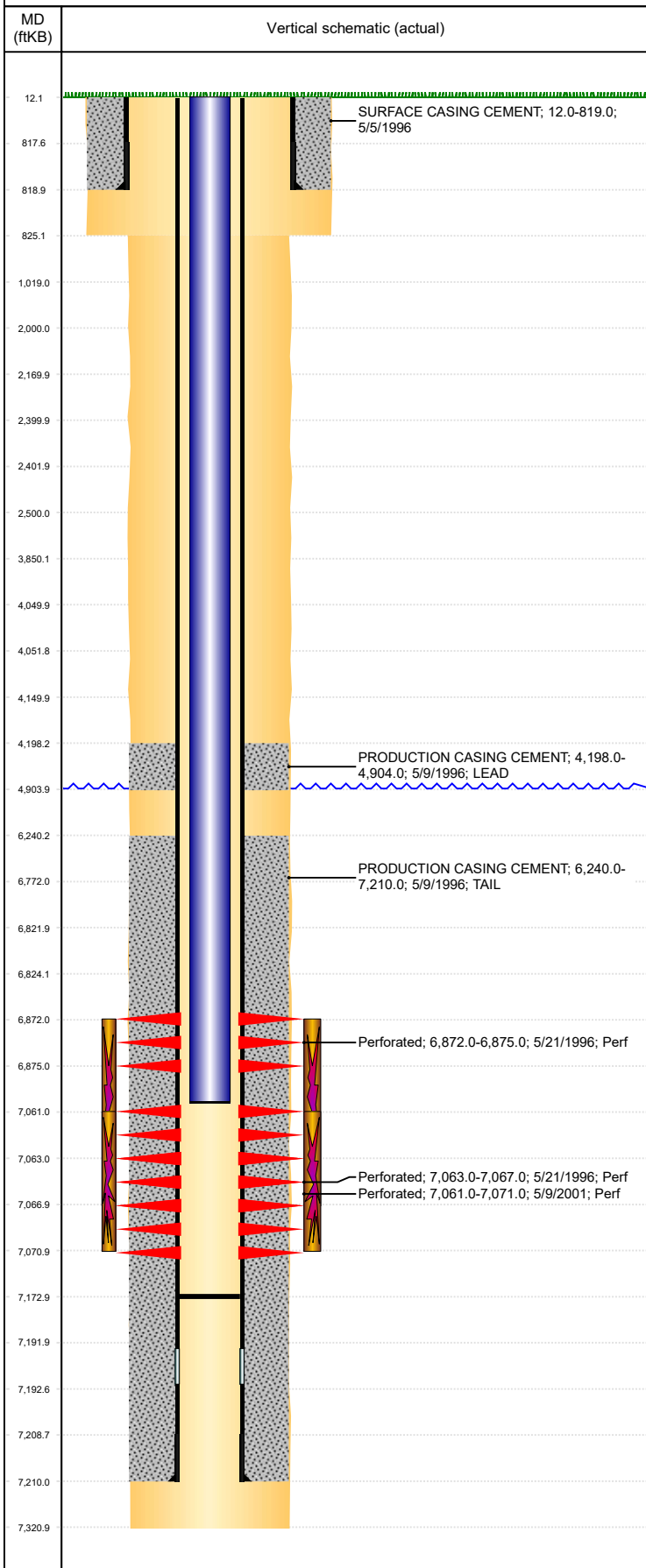


Well Name: GUTTERSEN 5-4

VERTICAL, ORIGINAL HOLE, 3/6/2020 10:49:50 AM



Well Header									
API 05-123-19153		Business Unit DJ BASIN			District 15		Well Config VERTICAL		
KB - GL / MSL (ft... 12.00		Spud Date 5/5/1996		P & A Date		Well Production Status PR			SoRT No
Comment LIMITED ENTRY. INSERT @ 7192'. DISCREPENCY W/ KB DEPTH, USED DEPTH ON LOGS OF 4896'. FIELD OPERATIONS NOTICE - FLOWLINES ABANDONED PER RULE 1103; RECEIVED 6/29/17.									
Surface Location (Congressional)									
Qtr 3 SW	Qtr 4 NW	Section 4	Twonshp 2	Twonsh... N	Range 64	Rng E/... W	Actual Latitude (°) 40.16917500	Actual Longitude (°) -104.56342100	
Wellbore Sections									
Section Des			Size (in)			Act Top, MD (ftKB)		Act Btm, MD (ftKB)	
SURFACE			12 1/4			12		825	
PRODUCTION			7 7/8			825		7,321	
Casing Strings									
Csg Des		Run Date		OD (in)	Wt/Len (lb/ft)	Grade	Top, MD (ftKB)	MD (ftKB)	
Surface		5/5/1996		8 5/8	23.00		12.0	819.0	
Production		5/8/1996		3 1/2	7.70	I-70	12.0	7,210.0	
Cement									
Des				Start Date		Top (ftKB)		Btm (ftKB)	
SURFACE CASING CEMENT				5/5/1996		12.0		819.0	
PRODUCTION CASING CEMENT				5/9/1996		4,198.0		4,904.0	
PRODUCTION CASING CEMENT				5/9/1996		6,240.0		7,210.0	
Zone Statuses									
Zone Name	Status Date	Status	Fluid Type	Job			Prod Method		
NIORARA	6/10/1996	PR		DRILLING/COMPLETION - ORIGINAL, 5/5/1996...			Flowing		
CODELL	6/10/1996	PR		DRILLING/COMPLETION - ORIGINAL, 5/5/1996...			Flowing		
CODELL	6/5/2001	PR		DRILLING/COMPLETION - ORIGINAL, 5/5/1996...			Flowing		
Perforation Data									
Linked Zone		Bnch/Stg	Entered Shot Total	Top (ftKB)		Btm (ftKB)		Date	
NIORARA, ORIGINAL HOLE		B	7	6,872.00		6,875.00		5/21/1996	
CODELL, ORIGINAL HOLE			20	7,061.00		7,071.00		5/9/2001	
CODELL, ORIGINAL HOLE			10	7,063.00		7,067.00		5/21/1996	
Stimulation Intervals									
Zone			Start Date			Top (ftKB)		Btm (ftKB)	
NIORARA-CODELL, ORIGINAL HOLE			5/22/1996			6,872.0		7,067.0	
CODELL, ORIGINAL HOLE			5/11/2001			7,061.0		7,071.0	
Other In Hole									
Run Date		Des				OD (in)	Top (ftKB)	Btm (ftKB)	
Logs									
Date		Type				Top, MD (ftKB)		Btm, MD (ftKB)	
5/8/1996		COMPENSATED DENSITY				4,300.0		7,225.0	
5/8/1996		INDUCTION				800.0		7,226.0	
5/14/1996		CEMENT BOND				4,100.0		7,170.0	
10/5/2012		GYRO				0.0		7,000.0	
Plug Back Total Depths									
Date		Type		Com				Depth (ftKB)	
5/14/1996		FILL		DEPTH LOGGER ON CBL				7,176.0	
5/3/2001		FILL		TAG				7,173.0	