



Figure 1
HSR-Fogelman 6-26A -
Facility Layout &
Sample Locations

Legend

- Soil Sample (2/4/2020)
- Former Crude Oil Tank
- Former Produced Water Vessel
- Former Secondary Containment
- Excavation Extent (2/4/2020)

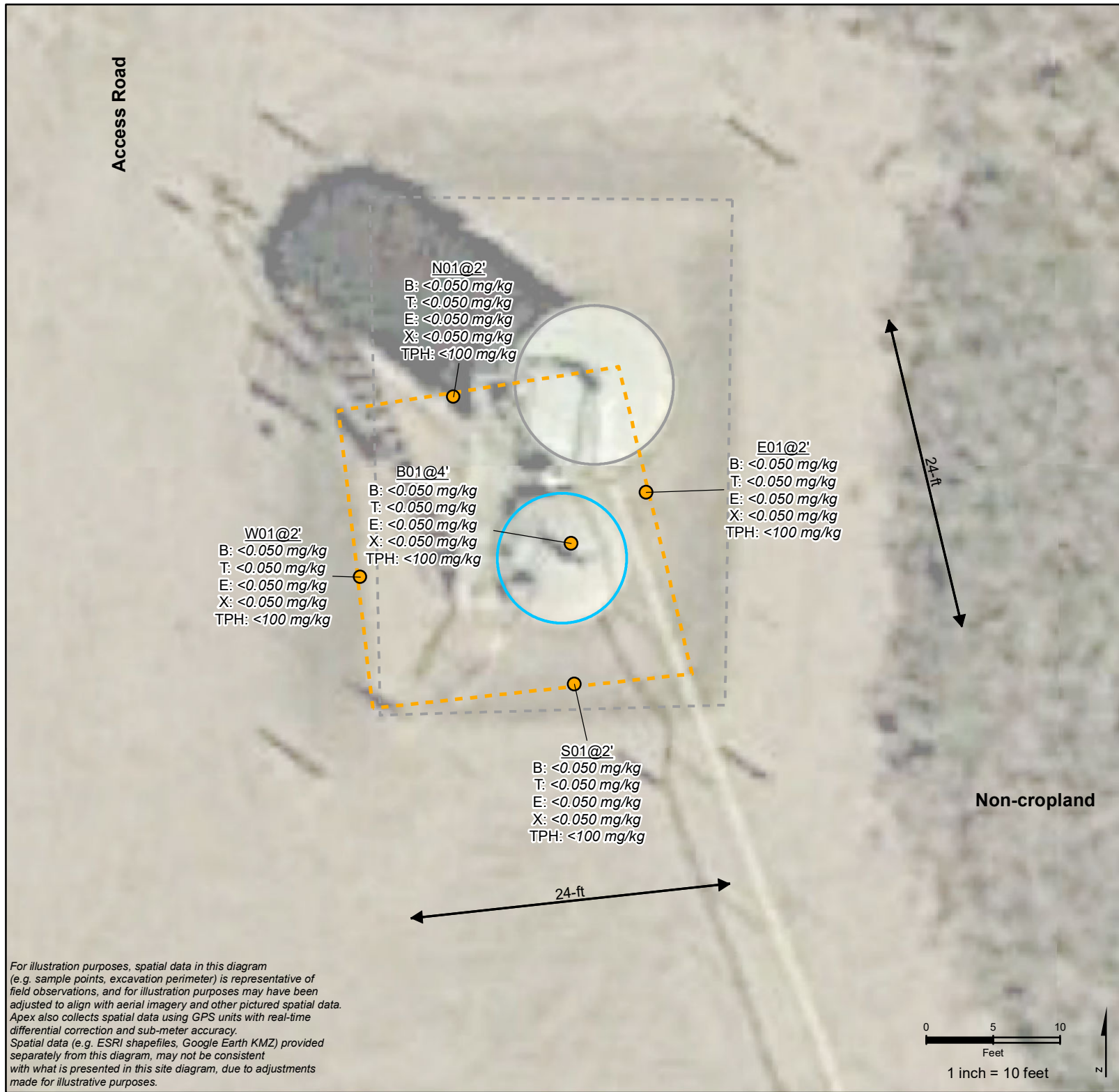
Sample Location

- B: benzene
- T: toluene
- E: ethylbenzene
- X: xylenes
- TPH: total petroleum hydrocarbons

Site Characteristics

Legal Location: SENW, Sec 26, T3N R66W
County: Weld
Land Use: Non-cropland
Topography: 0-3% Slopes
Run-Off Risk: Very low
Soil Type: Valent Sand

REVISED	BY	COMMENT
2/10/2020	BJB	Figure 1



For illustration purposes, spatial data in this diagram (e.g. sample points, excavation perimeter) is representative of field observations, and for illustration purposes may have been adjusted to align with aerial imagery and other pictured spatial data. Apex also collects spatial data using GPS units with real-time differential correction and sub-meter accuracy. Spatial data (e.g. ESRI shapefiles, Google Earth KMZ) provided separately from this diagram, may not be consistent with what is presented in this site diagram, due to adjustments made for illustrative purposes.

