

# T4S, R96W, 6th P.M.

(AS-DRILLED)  
 ELU A24 FED  
 11D-24 496  
 Elev. Graded  
 Ground = 8122.0'

1953 Brass Cap,  
 0.2' High, Pile of  
 Stones, Steel Post  
 Lat: 39.695158°  
 Long: 108.126422°

1953 Brass Cap,  
 0.3' High, Pile of  
 Stones  
 Lat: 39.695158°  
 Long: 108.117036°

RIO BLANCO CO. W

R 96  
 R 95  
 W W

GARFIELD CO.

1953 Brass Cap,  
 1.5' High, Fence  
 Post  
 Lat: 39.695111°  
 Long: 108.107661°

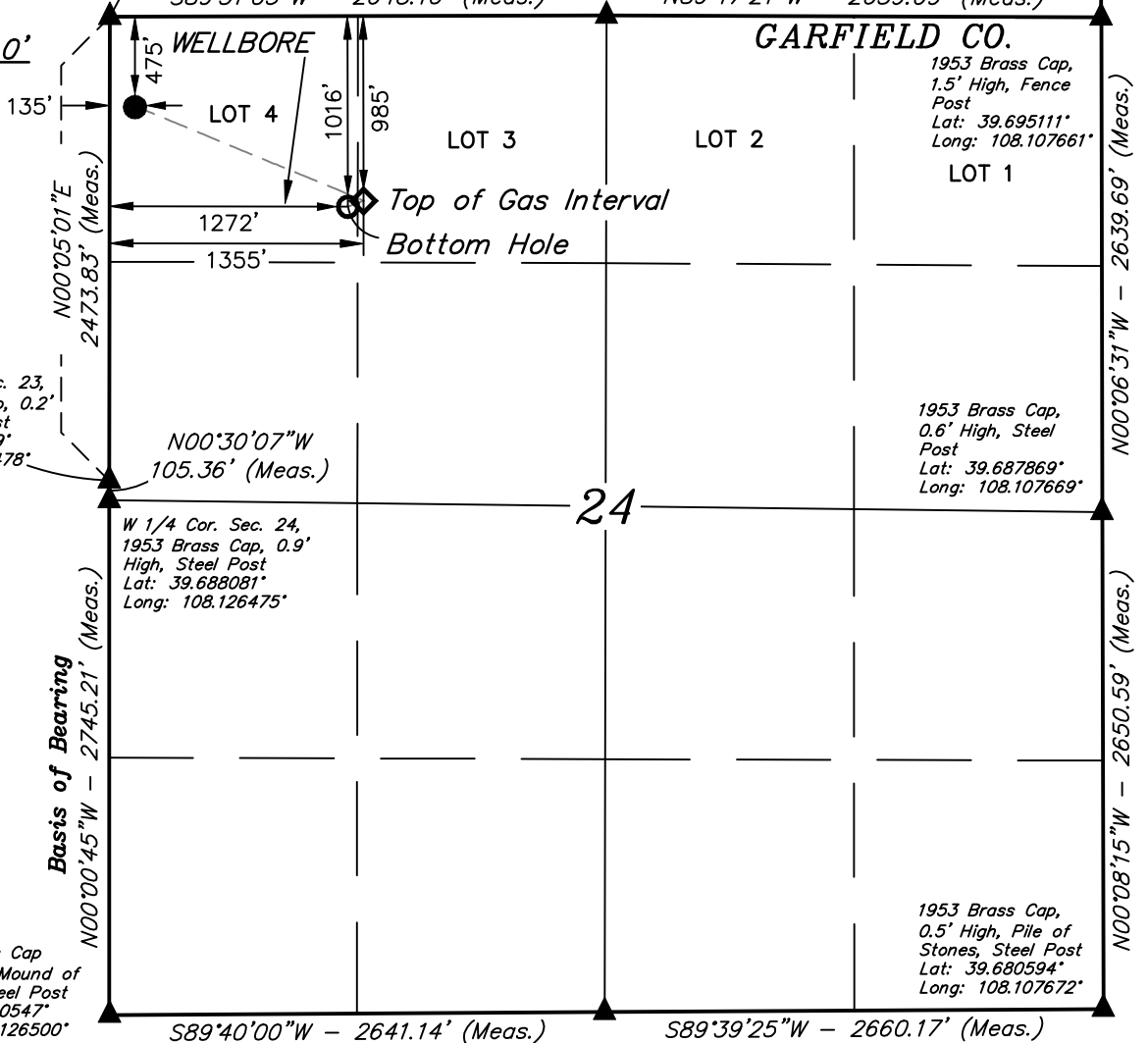
1953 Brass Cap,  
 0.6' High, Steel  
 Post  
 Lat: 39.687869°  
 Long: 108.107669°

1953 Brass Cap,  
 0.5' High, Pile of  
 Stones, Steel Post  
 Lat: 39.680594°  
 Long: 108.107672°

1953 Brass Cap,  
 0.5' High  
 Lat: 39.680569°  
 Long: 108.117119°

**LEGEND:**

- = SURFACE LOCATION.
- ◇ = TOP OF GAS INTERVAL.
- = BOTTOM HOLE.
- ▲ = SECTION CORNERS LOCATED. (NAD 83)



PDOP = 1.7

<b>NAD 83 (SURFACE LOCATION)</b>
LATITUDE = 39°41'37.88" (39.693856)
LONGITUDE = 108°07'33.49" (108.125969)
<b>NAD 27 (SURFACE LOCATION)</b>
LATITUDE = 39°41'37.97" (39.693880)
LONGITUDE = 108°07'31.20" (108.125334)
<b>UTM NAD 27 (ZONE 12)</b>
N: 14427542.23 E: 2449137.30



<b>NAD 83 (TOP OF GAS INTERVAL)</b>	<b>NAD 83 (BOTTOM HOLE)</b>
LATITUDE = 39°41'32.84" (39.692454)	LATITUDE = 39°41'32.54" (39.692371)
LONGITUDE = 108°07'17.91" (108.121643)	LONGITUDE = 108°07'18.99" (108.121941)
<b>NAD 27 (TOP OF GAS INTERVAL)</b>	<b>NAD 27 (BOTTOM HOLE)</b>
LATITUDE = 39°41'32.92" (39.692479)	LATITUDE = 39°41'32.62" (39.692396)
LONGITUDE = 108°07'15.63" (108.121008)	LONGITUDE = 108°07'16.70" (108.121306)
<b>UTM NAD 27 (ZONE 12)</b>	<b>UTM NAD 27 (ZONE 12)</b>
N: 14427070.92 E: 2450370.98	N: 14427037.98 E: 2450288.12

**CERTIFICATE**

THIS IS TO CERTIFY THAT THE ABOVE PLAT WAS PREPARED FROM FIELD NOTES OF ACTUAL SURVEYS MADE BY ME OR UNDER MY SUPERVISION AND THAT THE LOCATION HAS BEEN STAKED ON THE GROUND AS SHOWN ON THE PLAT AND THAT THE SAME ARE TRUE AND CORRECT TO THE BEST OF MY KNOWLEDGE AND BELIEF.

Handwritten signature: *Harold Marshall*

REGISTERED LAND SURVEYOR  
 REGISTRATION NO. 199180  
 STATE OF COLORADO

PROFESSOR LICENSE  
 38190  
 02-21-20

**BASIS OF BEARINGS**

BEARINGS ARE BASED ON THE ASSUMPTION THAT THE WEST LINE OF THE SOUTHWEST 1/4 OF SECTION 24 BEARS N00°00'45"W. MONUMENTS DESCRIBED HEREON.

**BASIS OF ELEVATION**

BENCH MARK (H79) LOCATED IN THE NE 1/4 OF SECTION 35, T4S, R98W, 6th P.M., TAKEN FROM THE BULL FORK QUADRANGLE, COLORADO, 7.5 MINUTE SERIES. (TOPOGRAPHIC MAP) PUBLISHED BY THE UNITED STATES DEPARTMENT OF THE INTERIOR, GEOLOGICAL SURVEY. SAID ELEVATION IS MARKED AS BEING 8535 FEET.



**UELS, LLC**  
 Corporate Office \* 85 South 200 East  
 Vernal, UT 84078 \* (435) 789-1017



**Caerus Oil & Gas LLC**

(AS-DRILLED) ELU A24 FED 11D-24 496  
 LOT 4, SECTION 24, T4S, R96W, 6th P.M.  
 GARFIELD COUNTY, COLORADO

<b>SURVEYED BY</b>	JOHN FLOYD, M.P.	02-18-20	<b>SCALE</b>
<b>DRAWN BY</b>	T.L.L.	02-20-20	1" = 1000'

**AS-DRILLED WELL LOCATION PLAT**