

Fed 11D-24
Garfield County, CO
Q192040 & RM-191752
Design #2

Company Name: Caerus Oil & Gas
Fed 11D-24
Garfield County, CO
Rig: H&P #329
Created By: Will Jircik
Date: 17:07, December 08 2019

PROJECT DETAILS: Garfield County, CO

Geodetic System: Universal Transverse Mercator (US Survey Feet)
Datum: NAD 1927 - Western US
Ellipsoid: Clarke 1866
Zone: Zone 12N (114 W to 108 W)
System Datum: Mean Sea Level

FORMATION TOP DETAILS

TVDPath	MDPath	Formation
6178.0	6258.2	Wasatch G
6702.0	6739.7	Fort Union
8479.0	8589.3	Ohio Creek
8815.0	8925.3	Williams Fork
8865.0	8975.3	TOG
11750.0	11861.3	Cameo
12260.0	12361.4	Rollins

DESIGN TARGET DETAILS

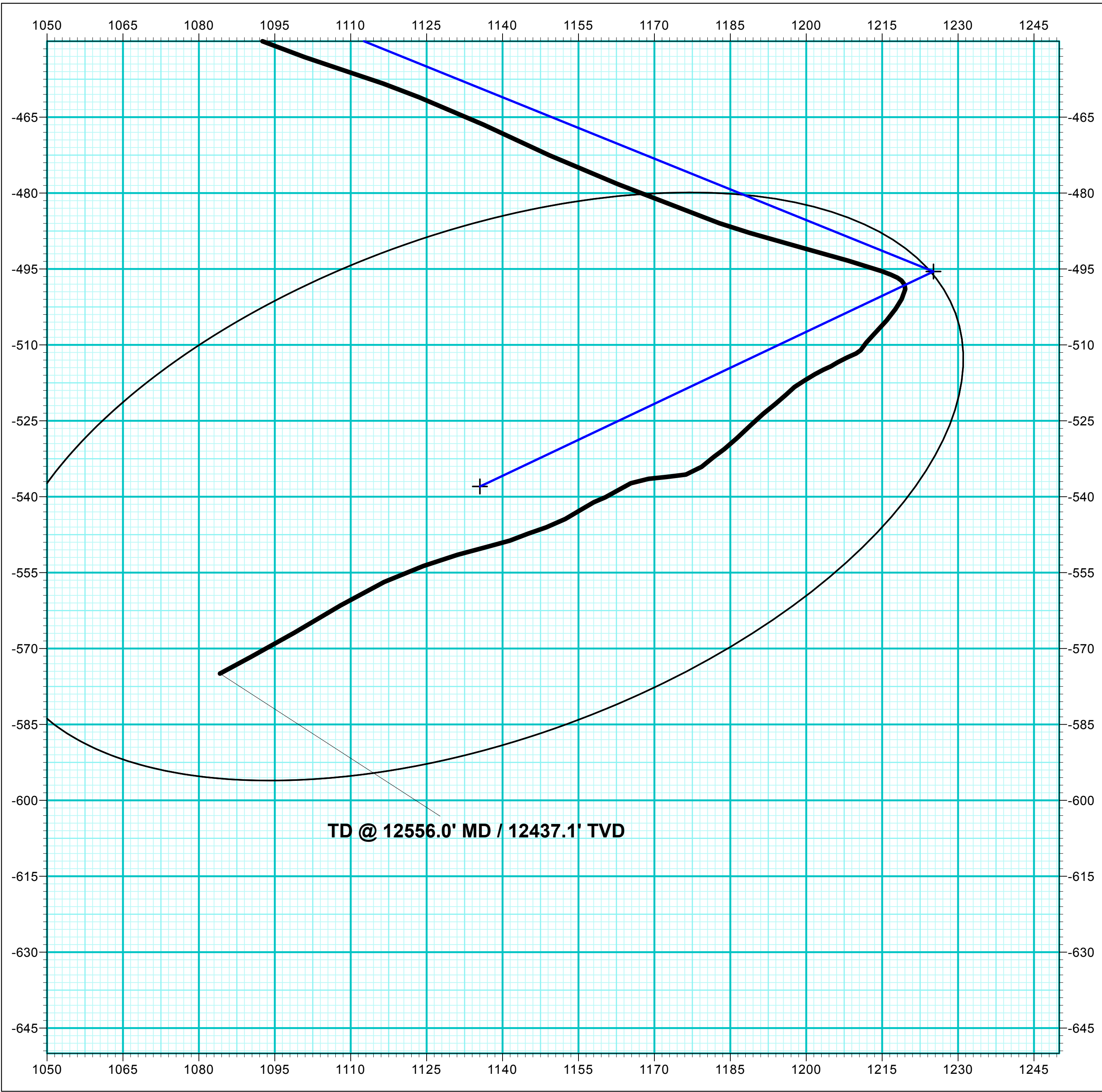
Name	TVD	+N/-S	+E/-W	Northing	Easting	Latitude	Longitude
OhioCreek 11D-24	8479.0	-495.5	1225.2	14427086.03	2450377.60	39.692520	-108.120962
PBHL - 11D-24	12450.0	-538.0	1135.5	14427040.70	2450289.40	39.692403	-108.121301

WELL DETAILS: Fed 11D-24

+N/-S	+E/-W	Northing	Easting	Latitude	Longitude
0.0	0.0	14427542.00	2449137.20	39.693880	-108.125334

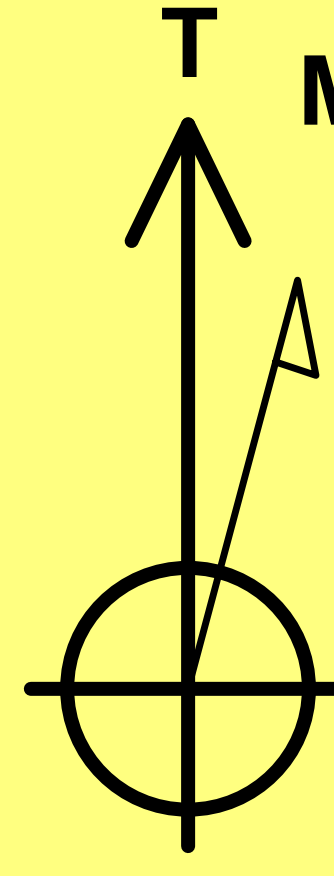
DESIGN ANNOTATIONS

MD	Inc	Azi	TVD	+N/-S	+E/-W	VSec	Departure	Annotation
400.0	0.00	0.00	400.0	0.0	0.0	0.0	0.0	Build 3" / 100'
722.3	9.67	112.02	720.8	-10.2	25.2	27.1	27.1	EOB @ 9.67° Inc. / 112.02° Azm
8266.9	9.67	112.02	8158.2	-485.3	1200.0	1292.2	1294.4	Drop 3" / 100'
8589.3	0.00	0.00	8479.0	-495.5	1225.2	1319.3	1321.6	EOD @ Vertical / Build 1" / 100'
8735.0	1.46	244.64	8524.7	-496.3	1223.5	1318.2	1323.4	EOB @ 1.46° Inc. / 244.64° Azm
12561.5	1.46	244.64	12450.0	-538.0	1135.5	1256.5	1420.7	TD @ 12561.5' MD / 12450.0' TVD



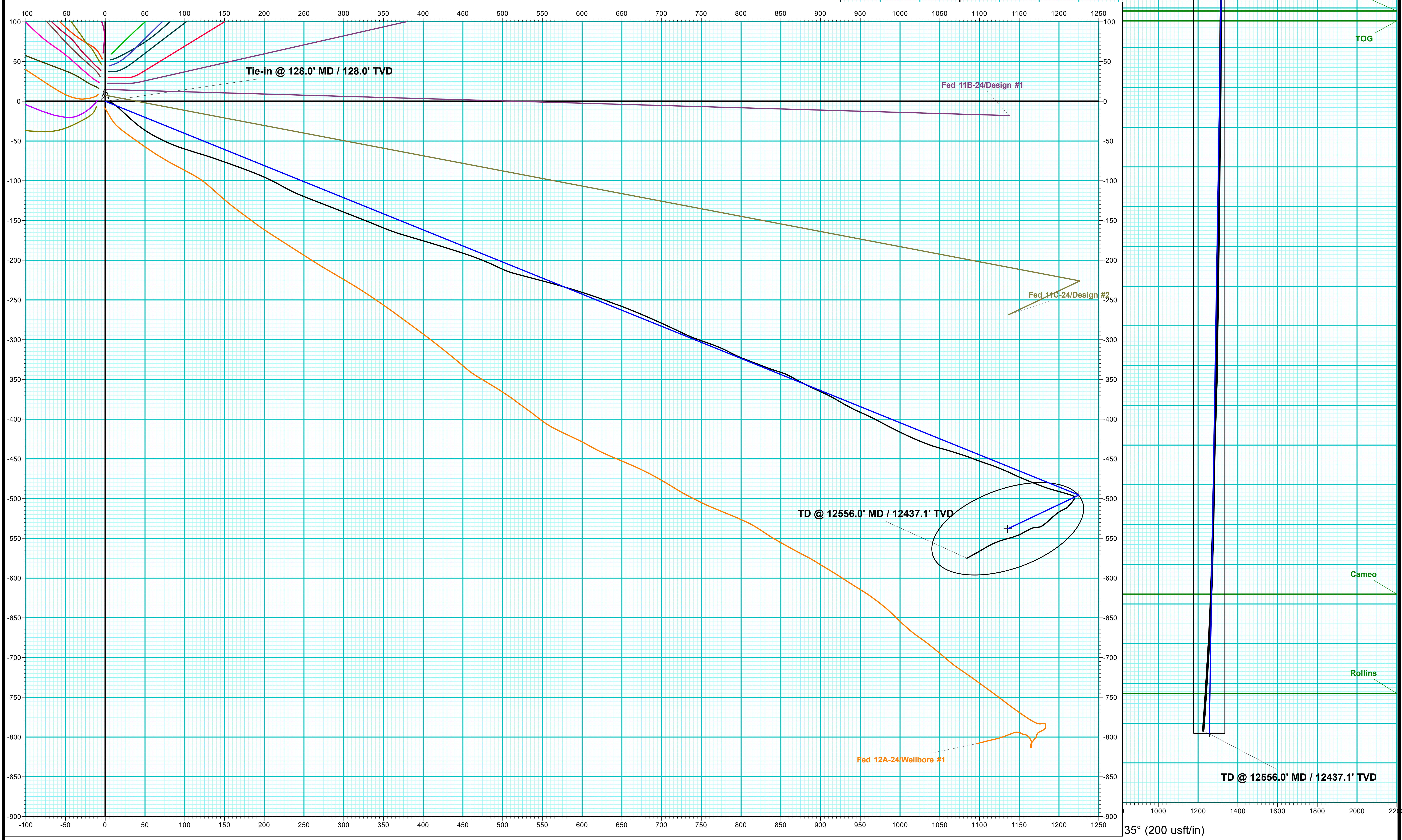
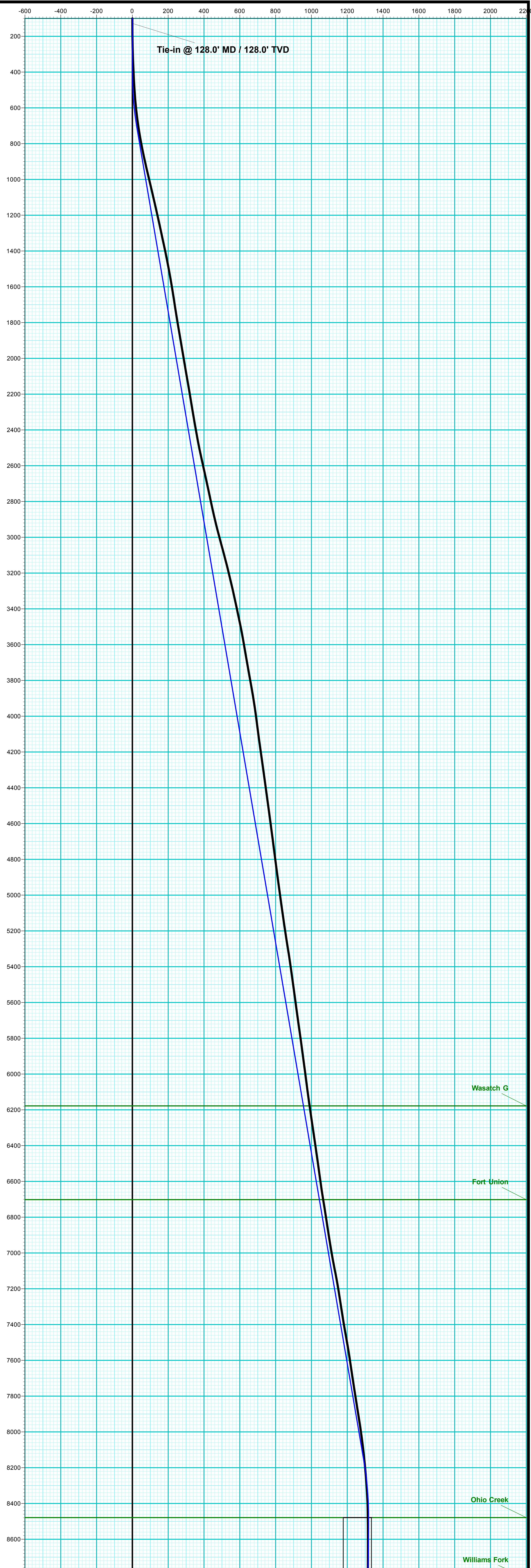
ANNOTATIONS

MD	Inc	Azi	TVD	+N/-S	+E/-W	VSec	Departure	Annotation
128.0	0.00	0.00	128.0	0.0	0.0	0.0	0.0	Tie-in @ 128.0' MD / 128.0' TVD
12556.0	7.40	241.60	12437.1	-575.0	1084.2	1227.2	1484.2	TD @ 12556.0' MD / 12437.1' TVD



Azimuths to True North
Magnetic North: 9.48°

Strength: 51235.0nT
Dip Angle: 65.82°
Date: 11/26/2019
Model: HDGM_FILE





Caerus Oil & Gas

Garfield County, CO

Sec 24, T4S, R96W

Fed 11D-24 - Slot Fed 11D-24

Wellbore #1

Design: Wellbore #1

QES Survey Report

08 December, 2019



Company:	Caerus Oil & Gas	Local Co-ordinate Reference:	Well Fed 11D-24 - Slot Fed 11D-24
Project:	Garfield County, CO	TVD Reference:	RKB @ 8158.0usft (H&P #329)
Site:	Sec 24, T4S, R96W	MD Reference:	RKB @ 8158.0usft (H&P #329)
Well:	Fed 11D-24	North Reference:	True
Wellbore:	Wellbore #1	Survey Calculation Method:	Minimum Curvature
Design:	Wellbore #1	Database:	EDM 5000.1 Single User Db

Project	Garfield County, CO		
Map System:	Universal Transverse Mercator (US Survey Feet)	System Datum:	Mean Sea Level
Geo Datum:	NAD 1927 - Western US		
Map Zone:	Zone 12N (114 W to 108 W)		

Site	Sec 24, T4S, R96W				
Site Position:		Northing:	14,427,542.90 usft	Latitude:	39.693883
From:	Map	Easting:	2,449,127.20 usft	Longitude:	-108.125370
Position Uncertainty:	0.0 usft	Slot Radius:	13-3/16 "	Grid Convergence:	1.84 °

Well	Fed 11D-24 - Slot Fed 11D-24					
Well Position	+N/-S	0.0 usft	Northing:	14,427,542.00 usft	Latitude:	39.693880
	+E/-W	0.0 usft	Easting:	2,449,137.20 usft	Longitude:	-108.125335
Position Uncertainty		0.0 usft	Wellhead Elevation:	usft	Ground Level:	8,128.0 usft

Wellbore	Wellbore #1				
Magnetics	Model Name	Sample Date	Declination (°)	Dip Angle (°)	Field Strength (nT)
	HDGM_FILE	11/26/2019	9.48	65.82	51,235.00000000

Design	Wellbore #1				
Audit Notes:					
Version:	1.0	Phase:	ACTUAL	Tie On Depth:	0.0
Vertical Section:	Depth From (TVD) (usft)	+N/-S (usft)	+E/-W (usft)	Direction (°)	
	0.0	0.0	0.0	117.94	

Survey Program	Date	12/8/2019			
From (usft)	To (usft)	Survey (Wellbore)	Tool Name	Description	
128.0	128.0	Rig survey (Wellbore #1)	MWD	OWSG MWD - Standard	
327.0	12,556.0	QES MWD Surveys (Wellbore #1)	MWD	OWSG MWD - Standard	

Survey										
Measured Depth (usft)	Inclination (°)	Azimuth (°)	Vertical Depth (usft)	+N/-S (usft)	+E/-W (usft)	Vertical Section (usft)	Dogleg Rate (°/100usft)	Build Rate (°/100usft)	Turn Rate (°/100usft)	
0.0	0.00	0.00	0.0	0.0	0.0	0.0	0.00	0.00	0.00	
Tie-in @ 128.0' MD / 128.0' TVD										
128.0	0.00	0.00	128.0	0.0	0.0	0.0	0.00	0.00	0.00	
327.0	2.20	97.50	327.0	-0.5	3.8	3.6	1.11	1.11	0.00	
420.0	2.70	112.30	419.9	-1.6	7.6	7.4	0.86	0.54	15.91	
510.0	4.00	127.00	509.7	-4.3	12.1	12.6	1.72	1.44	16.33	
605.0	6.30	132.90	604.3	-9.8	18.5	21.0	2.48	2.42	6.21	
699.0	8.80	133.10	697.5	-18.2	27.5	32.9	2.66	2.66	0.21	
794.0	10.80	129.60	791.1	-28.9	39.7	48.6	2.20	2.11	-3.68	
888.0	12.50	121.40	883.2	-39.8	55.2	67.4	2.52	1.81	-8.72	

Company:	Caerus Oil & Gas	Local Co-ordinate Reference:	Well Fed 11D-24 - Slot Fed 11D-24
Project:	Garfield County, CO	TVD Reference:	RKB @ 8158.0usft (H&P #329)
Site:	Sec 24, T4S, R96W	MD Reference:	RKB @ 8158.0usft (H&P #329)
Well:	Fed 11D-24	North Reference:	True
Wellbore:	Wellbore #1	Survey Calculation Method:	Minimum Curvature
Design:	Wellbore #1	Database:	EDM 5000.1 Single User Db

Survey										
Measured Depth (usft)	Inclination (°)	Azimuth (°)	Vertical Depth (usft)	+N/-S (usft)	+E/-W (usft)	Vertical Section (usft)	Dogleg Rate (°/100usft)	Build Rate (°/100usft)	Turn Rate (°/100usft)	
982.0	13.40	115.30	974.8	-49.7	73.7	88.4	1.74	0.96	-6.49	
1,077.0	13.10	109.40	1,067.3	-58.0	93.8	110.1	1.46	-0.32	-6.21	
1,171.0	13.20	106.30	1,158.8	-64.6	114.2	131.1	0.76	0.11	-3.30	
1,265.0	12.20	108.50	1,250.5	-70.7	133.9	151.4	1.18	-1.06	2.34	
1,360.0	12.10	109.80	1,343.4	-77.3	152.8	171.2	0.31	-0.11	1.37	
1,454.0	11.80	110.20	1,435.3	-83.9	171.1	190.5	0.33	-0.32	0.43	
1,548.0	10.10	111.50	1,527.6	-90.3	187.8	208.2	1.83	-1.81	1.38	
1,643.0	9.00	114.50	1,621.3	-96.4	202.3	223.9	1.27	-1.16	3.16	
1,737.0	9.00	117.80	1,714.1	-102.9	215.5	238.6	0.55	0.00	3.51	
1,831.0	9.40	119.30	1,806.9	-110.1	228.7	253.6	0.50	0.43	1.60	
1,925.0	9.90	112.60	1,899.6	-116.9	242.8	269.3	1.31	0.53	-7.13	
2,020.0	9.40	111.20	1,993.3	-122.9	257.6	285.1	0.58	-0.53	-1.47	
2,114.0	9.90	111.10	2,085.9	-128.6	272.3	300.8	0.53	0.53	-0.11	
2,208.0	9.90	111.50	2,178.5	-134.4	287.3	316.8	0.07	0.00	0.43	
2,303.0	9.20	111.50	2,272.2	-140.2	302.0	332.5	0.74	-0.74	0.00	
2,397.0	9.80	111.00	2,364.9	-145.8	316.5	347.9	0.64	0.64	-0.53	
2,492.0	10.70	111.90	2,458.4	-152.0	332.2	364.7	0.96	0.95	0.95	
2,586.0	12.50	112.70	2,550.5	-159.2	349.7	383.5	1.92	1.91	0.85	
2,681.0	12.70	107.70	2,643.2	-166.4	369.1	404.0	1.17	0.21	-5.26	
2,775.0	12.00	105.60	2,735.0	-172.1	388.4	423.8	0.88	-0.74	-2.23	
2,870.0	12.40	107.10	2,827.9	-177.8	407.6	443.4	0.54	0.42	1.58	
2,964.0	13.80	107.20	2,919.4	-184.1	428.0	464.3	1.49	1.49	0.11	
3,059.0	15.10	108.20	3,011.4	-191.3	450.6	487.7	1.39	1.37	1.05	
3,104.0	15.50	109.70	3,054.8	-195.1	461.8	499.4	1.25	0.89	3.33	
3,250.0	13.70	116.40	3,196.1	-209.4	495.7	536.0	1.69	-1.23	4.59	
3,345.0	13.10	104.20	3,288.6	-217.0	516.2	557.7	3.04	-0.63	-12.84	
3,439.0	12.30	105.50	3,380.3	-222.3	536.2	577.8	0.90	-0.85	1.38	
3,534.0	12.00	104.10	3,473.1	-227.4	555.5	597.3	0.44	-0.32	-1.47	
3,628.0	10.40	107.10	3,565.3	-232.3	573.1	615.1	1.81	-1.70	3.19	
3,723.0	9.50	105.90	3,658.9	-237.0	588.8	631.2	0.97	-0.95	-1.26	
3,817.0	10.50	108.60	3,751.5	-241.8	604.4	647.3	1.17	1.06	2.87	
3,911.0	10.00	108.50	3,844.0	-247.2	620.2	663.8	0.53	-0.53	-0.11	
4,006.0	8.70	112.30	3,937.7	-252.5	634.7	679.0	1.51	-1.37	4.00	
4,100.0	7.20	107.60	4,030.8	-257.0	646.9	691.9	1.74	-1.60	-5.00	
4,194.0	7.60	114.50	4,124.0	-261.3	658.2	703.9	1.04	0.43	7.34	
4,289.0	8.30	110.00	4,218.1	-266.3	670.3	717.0	0.99	0.74	-4.74	
4,383.0	8.00	116.00	4,311.2	-271.5	682.6	730.2	0.96	-0.32	6.38	
4,478.0	7.30	112.40	4,405.3	-276.7	694.1	742.9	0.89	-0.74	-3.79	
4,572.0	8.00	115.70	4,498.5	-281.8	705.5	755.3	0.88	0.74	3.51	
4,667.0	7.80	114.10	4,592.6	-287.3	717.4	768.4	0.31	-0.21	-1.68	
4,761.0	7.20	117.00	4,685.8	-292.6	728.4	780.6	0.75	-0.64	3.09	
4,855.0	7.50	111.20	4,779.0	-297.5	739.4	792.6	0.85	0.32	-6.17	
4,949.0	7.30	108.50	4,872.2	-301.6	750.8	804.6	0.43	-0.21	-2.87	

Company:	Caerus Oil & Gas	Local Co-ordinate Reference:	Well Fed 11D-24 - Slot Fed 11D-24
Project:	Garfield County, CO	TVD Reference:	RKB @ 8158.0usft (H&P #329)
Site:	Sec 24, T4S, R96W	MD Reference:	RKB @ 8158.0usft (H&P #329)
Well:	Fed 11D-24	North Reference:	True
Wellbore:	Wellbore #1	Survey Calculation Method:	Minimum Curvature
Design:	Wellbore #1	Database:	EDM 5000.1 Single User Db

Survey										
Measured Depth (usft)	Inclination (°)	Azimuth (°)	Vertical Depth (usft)	+N/-S (usft)	+E/-W (usft)	Vertical Section (usft)	Dogleg Rate (°/100usft)	Build Rate (°/100usft)	Turn Rate (°/100usft)	
5,044.0	8.30	110.10	4,966.3	-305.9	763.0	817.3	1.08	1.05	1.68	
5,138.0	7.40	113.30	5,059.5	-310.6	774.9	830.1	1.06	-0.96	3.40	
5,233.0	8.40	118.40	5,153.6	-316.3	786.6	843.1	1.28	1.05	5.37	
5,327.0	9.30	113.00	5,246.4	-322.5	799.6	857.6	1.30	0.96	-5.74	
5,421.0	8.60	109.00	5,339.3	-327.8	813.3	872.1	1.00	-0.74	-4.26	
5,516.0	7.80	112.80	5,433.3	-332.6	825.9	885.5	1.02	-0.84	4.00	
5,610.0	7.90	109.10	5,526.4	-337.2	837.9	898.2	0.55	0.11	-3.94	
5,704.0	7.50	106.20	5,619.6	-341.0	849.9	910.6	0.59	-0.43	-3.09	
5,799.0	8.30	119.30	5,713.7	-346.1	861.9	923.6	2.07	0.84	13.79	
5,893.0	7.90	117.60	5,806.8	-352.4	873.5	936.8	0.50	-0.43	-1.81	
5,987.0	7.60	117.40	5,899.9	-358.3	884.7	949.5	0.32	-0.32	-0.21	
6,084.0	7.60	113.20	5,996.1	-363.7	896.3	962.3	0.57	0.00	-4.33	
6,179.0	7.20	115.60	6,090.3	-368.8	907.5	974.5	0.53	-0.42	2.53	
6,273.0	8.30	119.80	6,183.4	-374.7	918.7	987.2	1.32	1.17	4.47	
6,368.0	8.30	120.80	6,277.4	-381.6	930.5	1,000.9	0.15	0.00	1.05	
6,462.0	8.60	115.00	6,370.4	-388.1	942.7	1,014.7	0.96	0.32	-6.17	
6,557.0	7.70	113.00	6,464.4	-393.6	955.0	1,028.1	0.99	-0.95	-2.11	
6,651.0	8.10	117.10	6,557.5	-399.0	966.7	1,041.0	0.73	0.43	4.36	
6,746.0	8.30	119.00	6,651.6	-405.4	978.7	1,054.5	0.35	0.21	2.00	
6,840.0	9.50	115.90	6,744.4	-412.1	991.6	1,069.1	1.37	1.28	-3.30	
6,935.0	8.50	117.10	6,838.3	-418.7	1,004.9	1,083.9	1.07	-1.05	1.26	
7,029.0	8.90	111.80	6,931.2	-424.6	1,017.8	1,098.1	0.95	0.43	-5.64	
7,123.0	10.50	112.60	7,023.8	-430.6	1,032.5	1,113.9	1.71	1.70	0.85	
7,218.0	11.20	104.70	7,117.1	-436.2	1,049.4	1,131.5	1.73	0.74	-8.32	
7,312.0	9.20	107.30	7,209.7	-440.8	1,065.4	1,147.7	2.18	-2.13	2.77	
7,407.0	8.70	107.90	7,303.5	-445.3	1,079.5	1,162.3	0.54	-0.53	0.63	
7,501.0	9.50	111.80	7,396.3	-450.3	1,093.4	1,177.0	1.07	0.85	4.15	
7,596.0	10.30	107.60	7,489.9	-455.8	1,108.8	1,193.1	1.13	0.84	-4.42	
7,690.0	8.80	112.20	7,582.6	-461.1	1,123.5	1,208.6	1.79	-1.60	4.89	
7,784.0	8.20	113.90	7,675.6	-466.5	1,136.3	1,222.4	0.69	-0.64	1.81	
7,879.0	9.10	115.80	7,769.5	-472.5	1,149.2	1,236.7	0.99	0.95	2.00	
7,973.0	8.90	109.90	7,862.3	-478.2	1,162.8	1,251.3	1.00	-0.21	-6.28	
8,067.0	8.90	112.30	7,955.2	-483.5	1,176.3	1,265.7	0.39	0.00	2.55	
8,162.0	7.20	105.90	8,049.3	-487.9	1,188.9	1,278.9	2.02	-1.79	-6.74	
8,256.0	6.40	105.70	8,142.6	-490.9	1,199.6	1,289.8	0.85	-0.85	-0.21	
8,351.0	4.50	105.70	8,237.2	-493.3	1,208.2	1,298.6	2.00	-2.00	0.00	
8,445.0	4.00	109.20	8,330.9	-495.4	1,214.9	1,305.4	0.60	-0.53	3.72	
8,539.0	1.40	133.30	8,424.8	-497.3	1,218.8	1,309.8	2.96	-2.77	25.64	
8,634.0	1.10	186.80	8,519.8	-499.0	1,219.6	1,311.2	1.22	-0.32	56.32	
8,728.0	1.50	209.10	8,613.7	-501.0	1,218.9	1,311.5	0.68	0.43	23.72	
8,822.0	1.30	215.20	8,707.7	-502.9	1,217.6	1,311.4	0.27	-0.21	6.49	
8,917.0	2.20	219.10	8,802.7	-505.2	1,215.9	1,310.9	0.96	0.95	4.11	
9,011.0	1.60	227.80	8,896.6	-507.5	1,213.8	1,310.1	0.71	-0.64	9.26	

Company:	Caerus Oil & Gas	Local Co-ordinate Reference:	Well Fed 11D-24 - Slot Fed 11D-24
Project:	Garfield County, CO	TVD Reference:	RKB @ 8158.0usft (H&P #329)
Site:	Sec 24, T4S, R96W	MD Reference:	RKB @ 8158.0usft (H&P #329)
Well:	Fed 11D-24	North Reference:	True
Wellbore:	Wellbore #1	Survey Calculation Method:	Minimum Curvature
Design:	Wellbore #1	Database:	EDM 5000.1 Single User Db

Survey										
Measured Depth (usft)	Inclination (°)	Azimuth (°)	Vertical Depth (usft)	+N/-S (usft)	+E/-W (usft)	Vertical Section (usft)	Dogleg Rate (°/100usft)	Build Rate (°/100usft)	Turn Rate (°/100usft)	
9,105.0	1.80	217.80	8,990.6	-509.5	1,211.9	1,309.4	0.38	0.21	-10.64	
9,200.0	0.50	210.90	9,085.6	-511.1	1,210.8	1,309.1	1.37	-1.37	-7.26	
9,294.0	0.90	247.70	9,179.6	-511.7	1,209.9	1,308.6	0.62	0.43	39.15	
9,389.0	1.50	245.20	9,274.5	-512.5	1,208.0	1,307.4	0.63	0.63	-2.63	
9,483.0	1.00	239.10	9,368.5	-513.4	1,206.2	1,306.2	0.55	-0.53	-6.49	
9,577.0	0.90	240.60	9,462.5	-514.2	1,204.9	1,305.4	0.11	-0.11	1.60	
9,671.0	1.10	249.30	9,556.5	-514.9	1,203.4	1,304.4	0.27	0.21	9.26	
9,766.0	1.20	235.70	9,651.5	-515.8	1,201.7	1,303.3	0.31	0.11	-14.32	
9,860.0	1.70	240.80	9,745.4	-517.0	1,199.7	1,302.1	0.55	0.53	5.43	
9,955.0	1.20	231.80	9,840.4	-518.3	1,197.7	1,300.9	0.58	-0.53	-9.47	
10,049.0	1.50	224.00	9,934.4	-519.8	1,196.0	1,300.2	0.37	0.32	-8.30	
10,144.0	1.90	233.30	10,029.3	-521.7	1,193.9	1,299.2	0.51	0.42	9.79	
10,237.0	2.00	228.60	10,122.3	-523.6	1,191.5	1,297.9	0.20	0.11	-5.05	
10,331.0	2.00	226.70	10,216.2	-525.9	1,189.0	1,296.8	0.07	0.00	-2.02	
10,425.0	2.60	226.60	10,310.1	-528.4	1,186.3	1,295.6	0.64	0.64	-0.11	
10,520.0	1.40	234.30	10,405.1	-530.6	1,183.8	1,294.4	1.29	-1.26	8.11	
10,614.0	1.60	232.50	10,499.1	-532.1	1,181.8	1,293.4	0.22	0.21	-1.91	
10,708.0	2.30	230.10	10,593.0	-534.1	1,179.3	1,292.1	0.75	0.74	-2.55	
10,803.0	2.00	259.30	10,687.9	-535.6	1,176.2	1,290.1	1.18	-0.32	30.74	
10,911.0	2.10	266.10	10,795.9	-536.1	1,172.4	1,286.9	0.24	0.09	6.30	
11,006.0	2.20	262.40	10,890.8	-536.5	1,168.9	1,284.0	0.18	0.11	-3.89	
11,101.0	2.20	249.70	10,985.7	-537.3	1,165.4	1,281.3	0.51	0.00	-13.37	
11,195.0	1.80	231.00	11,079.7	-538.9	1,162.5	1,279.5	0.81	-0.43	-19.89	
11,290.0	1.30	255.10	11,174.6	-540.1	1,160.3	1,278.1	0.85	-0.53	25.37	
11,384.0	1.70	240.50	11,268.6	-541.1	1,158.1	1,276.6	0.59	0.43	-15.53	
11,479.0	1.80	239.00	11,363.6	-542.5	1,155.6	1,275.1	0.12	0.11	-1.58	
11,573.0	2.70	239.80	11,457.5	-544.4	1,152.4	1,273.1	0.96	0.96	0.85	
11,668.0	2.30	254.00	11,552.4	-546.1	1,148.6	1,270.6	0.77	-0.42	14.95	
11,762.0	2.30	247.80	11,646.3	-547.3	1,145.1	1,268.0	0.26	0.00	-6.60	
11,856.0	2.40	250.10	11,740.2	-548.7	1,141.5	1,265.5	0.15	0.11	2.45	
11,950.0	3.20	258.00	11,834.1	-549.9	1,137.0	1,262.2	0.94	0.85	8.40	
12,045.0	4.20	252.50	11,928.9	-551.5	1,131.1	1,257.7	1.12	1.05	-5.79	
12,139.0	4.50	251.40	12,022.7	-553.7	1,124.4	1,252.7	0.33	0.32	-1.17	
12,233.0	5.70	245.00	12,116.3	-556.8	1,116.6	1,247.4	1.41	1.28	-6.81	
12,328.0	6.20	238.80	12,210.8	-561.5	1,108.0	1,241.9	0.86	0.53	-6.53	
12,422.0	6.70	240.00	12,304.2	-566.9	1,098.9	1,236.4	0.55	0.53	1.28	
12,502.0	7.40	241.60	12,383.6	-571.6	1,090.3	1,231.1	0.91	0.88	2.00	
TD @ 12556.0' MD / 12437.1' TVD										
12,556.0	7.40	241.60	12,437.1	-575.0	1,084.2	1,227.2	0.00	0.00	0.00	

Company:	Caerus Oil & Gas	Local Co-ordinate Reference:	Well Fed 11D-24 - Slot Fed 11D-24
Project:	Garfield County, CO	TVD Reference:	RKB @ 8158.0usft (H&P #329)
Site:	Sec 24, T4S, R96W	MD Reference:	RKB @ 8158.0usft (H&P #329)
Well:	Fed 11D-24	North Reference:	True
Wellbore:	Wellbore #1	Survey Calculation Method:	Minimum Curvature
Design:	Wellbore #1	Database:	EDM 5000.1 Single User Db

Design Annotations				
Measured Depth (usft)	Vertical Depth (usft)	Local Coordinates		Comment
		+N/-S (usft)	+E/-W (usft)	
128.0	128.0	0.0	0.0	Tie-in @ 128.0' MD / 128.0' TVD
12,556.0	12,437.1	-575.0	1,084.2	TD @ 12556.0' MD / 12437.1' TVD