

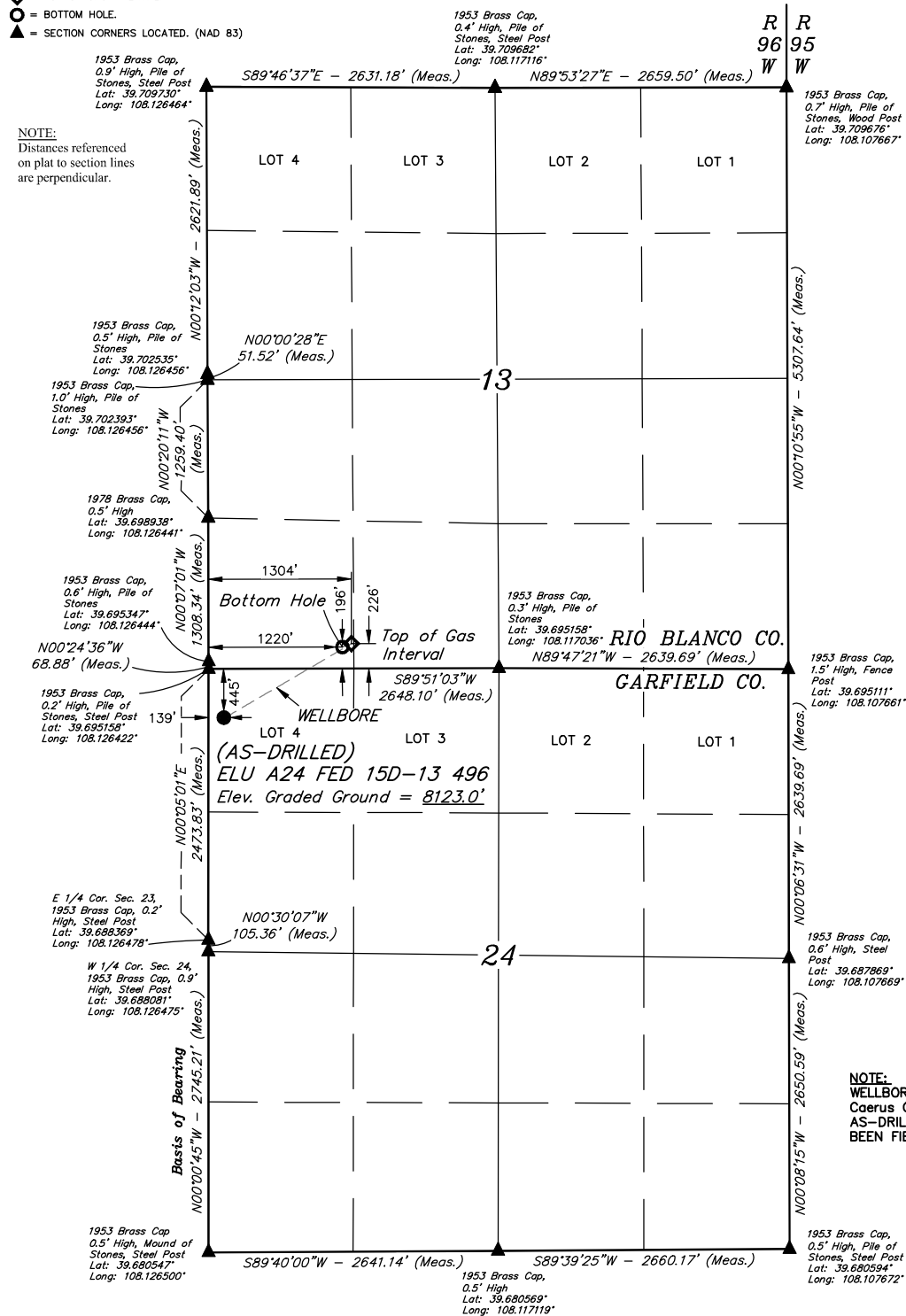
# LEGEND:

- = SURFACE LOCATION.
- ◊ = TOP OF GAS INTERVAL.
- = BOTTOM HOLE.
- ▲ = SECTION CORNERS LOCATED. (NAD 83)

## NOTE:

Distances referenced on plat to section lines are perpendicular.

T4S, R96W, 6th P.M.



## NOTE:

WELLBORE DATA PROVIDED BY Caerus Oil & Gas LLC. AS-DRILLED WELLHEAD HAS BEEN FIELD VERIFIED.



NAD 83 (SURFACE LOCATION)	NAD 83 (TOP OF GAS INTERVAL)	NAD 83 (BOTTOM HOLE)
LATITUDE = 39°41'38.17" (39.693937)	LATITUDE = 39°41'44.80" (39.695779)	LATITUDE = 39°41'44.51" (39.695696)
LONGITUDE = 108°07'33.45" (108.125957)	LONGITUDE = 108°07'18.53" (108.121813)	LONGITUDE = 108°07'19.60" (108.122110)
NAD 27 (SURFACE LOCATION)	NAD 27 (TOP OF GAS INTERVAL)	NAD 27 (BOTTOM HOLE)
LATITUDE = 39°41'38.26" (39.693962)	LATITUDE = 39°41'44.89" (39.695804)	LATITUDE = 39°41'44.60" (39.695721)
LONGITUDE = 108°07'31.16" (108.125322)	LONGITUDE = 108°07'16.24" (108.121178)	LONGITUDE = 108°07'17.31" (108.121475)
UTM NAD 27 (ZONE 12)	UTM NAD 27 (ZONE 12)	UTM NAD 27 (ZONE 12)
N: 14427571.97 E: 2449139.79	N: 14428280.31 E: 2450284.22	N: 14428247.48 E: 2450201.66

## BASIS OF BEARINGS

BEARINGS ARE BASED ON THE ASSUMPTION THAT THE WEST LINE OF THE SOUTHWEST 1/4 OF SECTION 24 BEARS N00°00'45"W. MONUMENTS DESCRIBED HEREON.

## BASIS OF ELEVATION

BENCHMARK (H79) LOCATED IN THE NE 1/4 OF SECTION 35, T4S, R96W, 6th P.M. TAKEN FROM THE BULL FORK QUADRANGLE, COLORADO, 7.5 MINUTE SERIES. (TOPOGRAPHIC MAP) PUBLISHED BY THE UNITED STATES DEPARTMENT OF THE INTERIOR, GEOLOGICAL SURVEY. SAID ELEVATION IS MARKED AS BEING 8535 FEET.



UELS, LLC  
Corporate Office \* 85 South 200 East  
Vernal, UT 84078 \* (435) 789-1017



## Caerus Oil & Gas LLC

(AS-DRILLED) ELU A24 FED 15D-13 496  
LOT 4, SECTION 24, T4S, R96W, 6th P.M.  
GARFIELD COUNTY, COLORADO

SURVEYED BY	JOHN FLOYD, M.P.	02-18-20	SCALE
DRAWN BY	T.L.L.	02-20-20	1" = 1000'
AS-DRILLED WELL LOCATION PLAT			

## CERTIFICATE

THIS IS TO CERTIFY THAT THE ABOVE PLAT WAS PREPARED BY ME IN ACCORDANCE WITH THE NOTES OF ACTUAL SURVEYS MADE BY ME AND UNDER MY SUPERVISION, AND THAT THE LOCATION HAS BEEN STATIONED ON THE GROUND AS SHOWN ON THE PLAT AND THAT THE SAME ARE TRUE AND CORRECT TO THE BEST OF MY KNOWLEDGE AND BELIEF.

REGISTERED LAND SURVEYOR  
STATE OF COLORADO  
02-21-20