

Colorado Energy Federal 14-2 P&A



DESCRIPTION                      DEPTH                      WELLBORE                      WELL HISTORY

Casing Remediation  
Perforations: **2384'-2385'**  
Squeezed **50 sks**  
Calculated TOC @ **2300'**  
Caculated BOC @ **2384'**

8-5/8" Surface Casing: 271'  
(cement to surface)

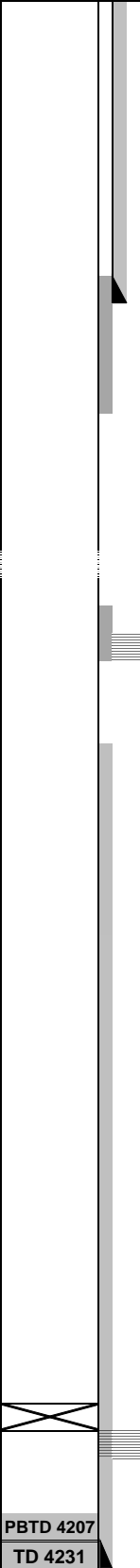
F/O Tool @ 1428'  
2nd Stage TOC @ 250'

Bad Casing: 2087'-2150'

4-1/2" Production 3470'  
1st Stage TOC

RBP @ 4150'  
Richard Perfs

4-1/2" Production Casing: 4231'



Perforation Data

Zone	Top (ft)	Bottom (ft)
Richard	4177	4187

WELL: Colorado Energy Federal 14-2

LOCATION: SWSW 14 10N 64W  
500' FSL 800' FWL

FORMATION: Richard

API #: 05-123-19616

Field: Pawnee Pioneer

CURRENT STATUS: Shut In

Spud: 02/28/99

Casing and Tubular Data

Type	Size	Weight	Top	Bottom	Hole Size	CMT Sx
Surface	8 5/8"	24.0 ppf	0	271'	12-1/4"	165
Production	4 1/2"	10.5 ppf	0	4231'	7-7/8"	150
Tubing						
TD	4231					
PBTD	4207					

Elevation Data

GL	5240	feet
KB	5251	feet
Difference	11	feet

Formation Tops Data

Formation	Depth
Upper Arapahoe	NA
Lower Arapahoe	NA
Base of Fox Hills	595
Richard	4179

Colorado Energy Federal 14-2 P&A



All cement is class G, 1.15 Yield, 15.8 ppg, unless specified otherwise

8-5/8" Surface Casing:  
(cement to surface)

271'

F/O Tool @ 1428'  
2nd Stage TOC @ 250'

Bad Casing: 2087'-2150'

CIBP set @ 2175'  
CICR set @ 2050'  
Pump 30 sks cement behind 4-1/2" csg  
Leave 10 sks of cement inside 4-1/2" under CICR  
Sting out and pump 4 sks (100') on top of CICR  
(44 total sks)

4-1/2" Production TOC :

3470'

CIBP Set @ 325'  
Pump 26 sks of cement on top of CICR to surf  
(26 total sks)

Casing Remediation 6/8/2010  
Perforations: 2384'-2385'  
Squeezed 50 sks  
Calculated TOC @ 2300'  
Caculated BOC @ 2384'

Dump bail  
8 sks, 1.15 Yield, 15.8 ppg  
cement on top of RBP

RBP @ 4150'  
Richard Perfs

4-1/2" Production Casing:

4231'

PBTD 4207  
TD 4231

Perforation Data		
Zone	Top (ft)	Bottom (ft)
Richard	4177	4187

WELL: Colorado Energy Federal 14-2

LOCATION: SWSW 14 10N 64W  
500' FSL 800' FWL

FORMATION: Richard

API #: 05-123-19616

Field: Pawnee Pioneer

CURRENT STATUS: Shut In

Spud: 02/28/99

Casing and Tubular Data

Type	Size	Weight	Top	Bottom	Hole Size	CMT Sx
Surface	8 5/8"	24.0 ppf	0	271'	12-1/4"	165
Production	4 1/2"	10.5 ppf	0	4231'	7-7/8"	150
Tubing						
TD	4231					
PBTD	4207					

Elevation Data

GL	5240	feet
KB	5251	feet
Difference	11	feet

Formation Tops Data

Formation	Depth
Upper Arapahoe	NA
Lower Arapahoe	NA
Base of Fox Hills	595
Richard	4179