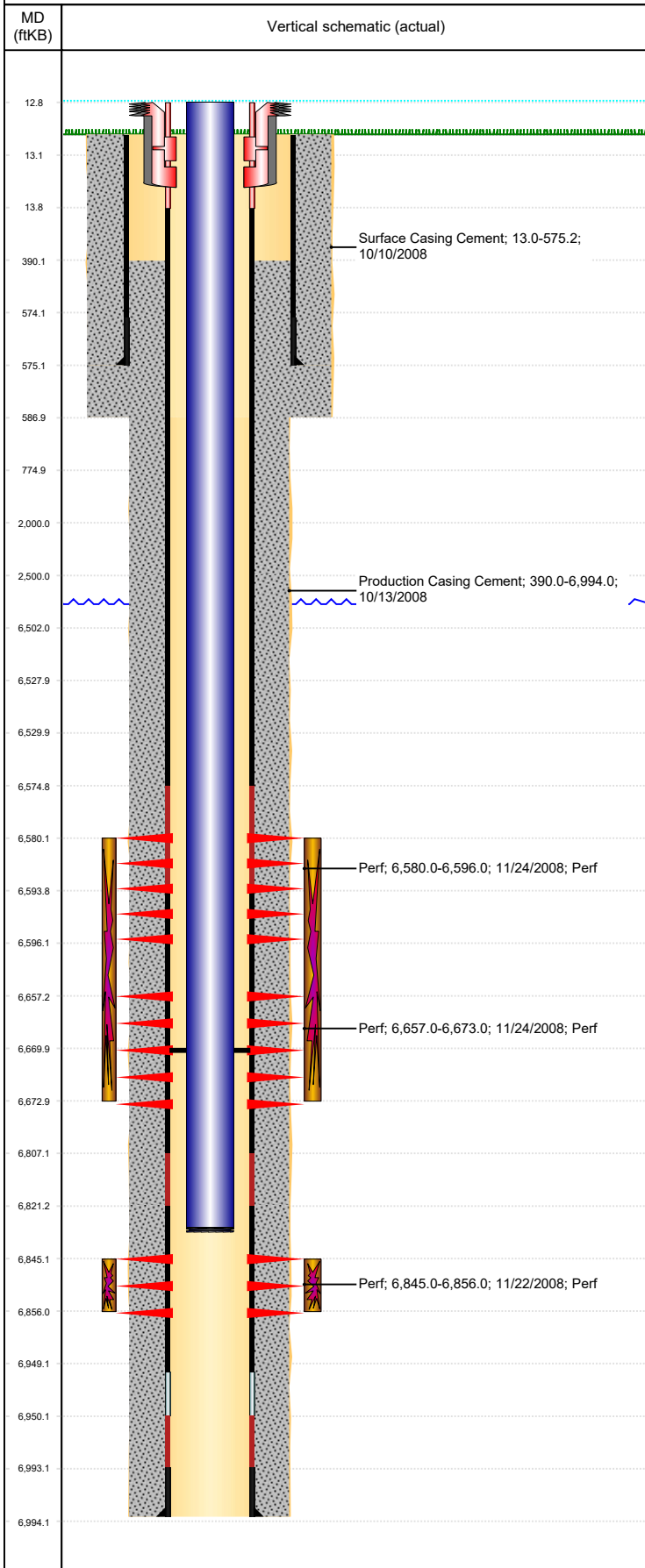


Well Name: LOCKMAN C15-27

DEVIATED, ORIGINAL HOLE, 3/4/2020 11:38:52 AM



Well Header									
API 05-123-25581		Business Unit DJ BASIN			District 15		Well Config DEVIATED		
KB - GL / MSL (ft... 13.00		Spud Date 10/10/2008		P & A Date		Well Production Status PR			SoRT No
Comment DIRECTIONAL WELL									
Surface Location (Congressional)									
Qtr 3 SE	Qtr 4 SE	Section 10	Twnshp 4	Twnsh.... N	Range 64	Rng E/... W	Actual Latitude (°) 40.32242856	Actual Longitude (°) -104.53090769	
Wellbore Sections									
Section Des			Size (in)			Act Top, MD (ftKB)		Act Btm, MD (ftKB)	
SURFACE			12 1/4			13		587	
PRODUCTION			7 7/8			587		6,994	
Casing Strings									
Csg Des			Run Date		OD (in)	Wt/Len (lb/ft)	Grade	Top, MD (ftKB)	MD (ftKB)
Surface			10/10/2008		8 5/8	24.00	J-55	13.0	575.2
Production			10/13/2008		4 1/2	11.60	M-80	12.8	6,994.0
Cement									
Des					Start Date		Top (ftKB)		Btm (ftKB)
Surface Casing Cement					10/10/2008		13.0		575.2
Production Casing Cement					10/13/2008		390.0		6,994.0
Zone Statuses									
Zone Name	Status Date	Status	Fluid Type	Job				Prod Method	
NIOBRARA	11/26/2008	PR		DRILLING/COMPLETION - ORIGINAL, 10/10/200...					
CODELL	11/26/2008	PR		DRILLING/COMPLETION - ORIGINAL, 10/10/200...					
Perforation Data									
Linked Zone		Bnch/Stg	Entered Shot Total	Top (ftKB)		Btm (ftKB)		Date	
NIOBRARA, ORIGINAL HOLE		A	32	6,580.00		6,596.00		11/24/2008	
NIOBRARA, ORIGINAL HOLE		B	32	6,657.00		6,673.00		11/24/2008	
CODELL, ORIGINAL HOLE			44	6,845.00		6,856.00		11/22/2008	
Stimulation Intervals									
Zone				Start Date		Top (ftKB)		Btm (ftKB)	
NIOBRARA, ORIGINAL HOLE				11/24/2008		6,580.0		6,673.0	
CODELL, ORIGINAL HOLE				11/24/2008		6,845.0		6,856.0	
Other In Hole									
Run Date		Des				OD (in)	Top (ftKB)	Btm (ftKB)	
11/25/2018		Plunger Lift				1 7/8			
Logs									
Date		Type				Top, MD (ftKB)		Btm, MD (ftKB)	
10/13/2008		Caliper/Comp. Density/Neutron/GR/SP/ML				2,550.0		7,000.0	
10/13/2008		DIL/GR/SP/Caliper				576.0		7,000.0	
10/24/2008		CBL/CCL/GR				390.0		6,903.0	
Plug Back Total Depths									
Date		Type		Com				Depth (ftKB)	
10/13/2008		FLOAT COLLAR						6,951.0	
12/29/2008		FILL						6,670.0	