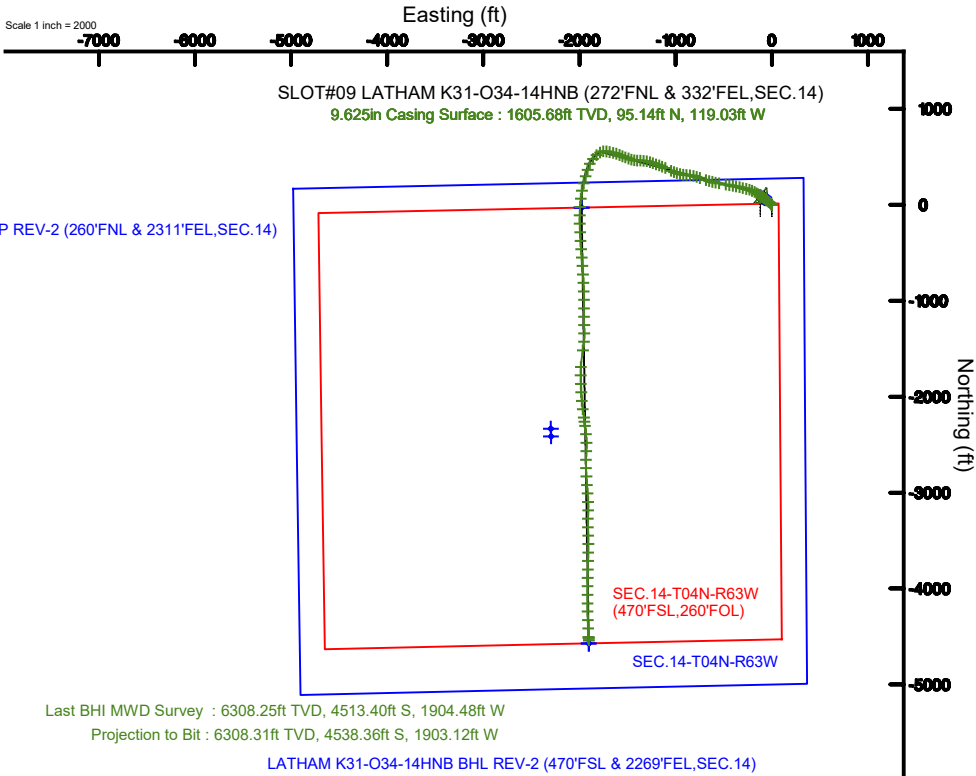
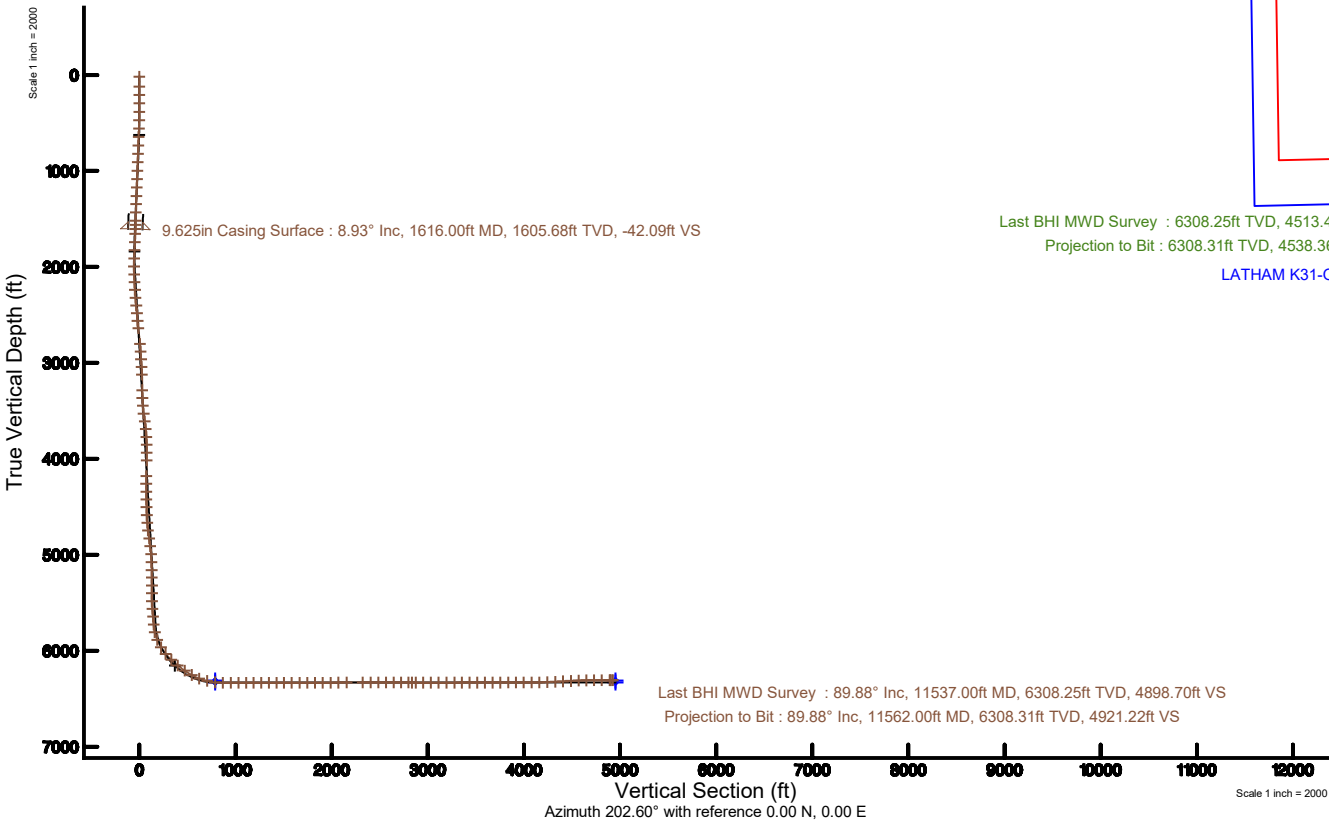


BONANZA CREEK ENERGY

Location: COLORADO Slot: SLOT#09 LATHAM K31-O34-14HNB (272°FNL & 332°FEL, SEC.14)
Field: WELD COUNTY (NAD83/TRUE) Well: LATHAM K31-O34-14HNB
Facility: SEC.14-T04N-R63W Wellbore: LATHAM K31-O34-14HNB PWB
05-123-49909-00

Plot reference wellpath is LATHAM K31-O34-14HNB (REV-C.0) PWP	Grid System: NAD83 / Lambert Colorado SP, Northern Zone (501), US feet
True vertical depths are referenced to AKITA 519 (4603.7'GL+17'KB@4620.7') (RKB)	North Reference: True north
Measured depths are referenced to AKITA 519 (4603.7'GL+17'KB@4620.7') (RKB)	Scale: True distance
AKITA 519 (4603.7'GL+17'KB@4620.7') (RKB) to Mean Sea Level: 4620.7 feet	Depths are in feet
Mean Sea Level to Ground level (At Slot: SLOT#09 LATHAM K31-O34-14HNB (272°FNL & 332°FEL, SEC.14)): 0 feet	Created by: doddanna on 2019-07-25
Coordinates are in feet referenced to Slot	Database: WellArchitectDB



Actual Wellpath Report

LATHAM K31-O34-14HNB AWP

Page 1 of 8



REFERENCE WELLPATH IDENTIFICATION

Operator	BONANZA CREEK ENERGY	Slot	SLOT#09 LATHAM K31-O34-14HNB (272'FNL & 332'FEL, SEC.14)
Area	COLORADO	Well	LATHAM K31-O34-14HNB
Field	WELD COUNTY (NAD83/TRUE)	Wellbore	LATHAM K31-O34-14HNB AWB
Facility	SEC.14-T04N-R63W		

REPORT SETUP INFORMATION

Projection System	NAD83 / Lambert Colorado SP, Northern Zone (501), US feet	Software System	WellArchitect® 5.1
North Reference	True	User	Doddanna
Scale	0.999958	Report Generated	7/25/2019 at 2:28:24 PM
Convergence at slot	0.71° East	Database/Source file	WellArchitectDB/LATHAM_K31-O34-14HNB_AWP.xml

WELLPATH LOCATION

	Local coordinates		Grid coordinates		Geographic coordinates	
	North[ft]	East[ft]	Easting[US ft]	Northing[US ft]	Latitude	Longitude
Slot Location	-81.33	-152.45	3307537.67	1361058.02	40°19'09.317"N	104°23'49.422"W
Facility Reference Pt			3307689.09	1361141.24	40°19'10.121"N	104°23'47.454"W
Field Reference Pt			3224525.77	1254425.87	40°01'44.400"N	104°41'53.556"W

WELLPATH DATUM

Calculation method	Minimum curvature	AKITA 519 (4603.7'GL+17'KB@4620.7') (RKB) to Facility Vertical Datum	4620.70ft
Horizontal Reference Pt	Slot	AKITA 519 (4603.7'GL+17'KB@4620.7') (RKB) to Mean Sea Level	4620.70ft
Vertical Reference Pt	AKITA 519 (4603.7'GL+17'KB@4620.7') (RKB)	AKITA 519 (4603.7'GL+17'KB@4620.7') (RKB) to Ground Level at Slot (SLOT#09 LATHAM K31-O34-14HNB (272'FNL & 332'FEL, SEC.14))	4620.70ft
MD Reference Pt	AKITA 519 (4603.7'GL+17'KB@4620.7') (RKB)	Section Origin	N 0.00, E 0.00 ft
Field Vertical Reference	Mean Sea Level	Section Azimuth	202.60°

Actual Wellpath Report

LATHAM K31-O34-14HNB AWP

Page 2 of 8



**BAKER
HUGHES**

REFERENCE WELLPATH IDENTIFICATION			
Operator	BONANZA CREEK ENERGY	Slot	SLOT#09 LATHAM K31-O34-14HNB (272'FNL & 332'FEL, SEC.14)
Area	COLORADO	Well	LATHAM K31-O34-14HNB
Field	WELD COUNTY (NAD83/TRUE)	Wellbore	LATHAM K31-O34-14HNB AWP
Facility	SEC.14-T04N-R63W		

WELLPATH DATA (132 stations) † = interpolated/extrapolated station

MD [ft]	Inclination [°]	Azimuth [°]	TVD [ft]	Vert Sect [ft]	North [ft]	East [ft]	Latitude	Longitude	DLS [°/100ft]	Comments
0.00†	0.000	56.620	0.00	0.00	0.00	0.00	40°19'09.317"N	104°23'49.422"W	0.00	
17.00	0.000	56.620	17.00	0.00	0.00	0.00	40°19'09.317"N	104°23'49.422"W	0.00	
121.00	0.260	56.620	121.00	-0.20	0.13	0.20	40°19'09.319"N	104°23'49.420"W	0.25	
209.00	0.390	100.180	209.00	-0.43	0.19	0.66	40°19'09.319"N	104°23'49.414"W	0.31	
296.00	0.410	78.730	296.00	-0.66	0.20	1.26	40°19'09.319"N	104°23'49.406"W	0.17	
384.00	0.340	334.340	384.00	-1.01	0.49	1.45	40°19'09.322"N	104°23'49.403"W	0.68	
472.00	3.500	313.650	471.93	-2.15	2.58	-0.61	40°19'09.343"N	104°23'49.430"W	3.62	
558.00	5.520	311.920	557.66	-4.46	7.16	-5.58	40°19'09.388"N	104°23'49.494"W	2.35	
647.00	5.910	312.960	646.22	-7.47	13.14	-12.12	40°19'09.447"N	104°23'49.579"W	0.45	
736.00	6.140	311.600	734.73	-10.62	19.42	-19.03	40°19'09.509"N	104°23'49.668"W	0.30	
824.00	7.650	309.610	822.09	-13.86	26.28	-27.07	40°19'09.577"N	104°23'49.772"W	1.74	
912.00	7.420	307.610	909.33	-17.05	33.48	-36.08	40°19'09.648"N	104°23'49.888"W	0.40	
1001.00	8.870	308.660	997.43	-20.43	41.28	-45.99	40°19'09.725"N	104°23'50.016"W	1.64	
1088.00	8.420	308.980	1083.44	-24.09	49.48	-56.18	40°19'09.806"N	104°23'50.147"W	0.52	
1177.00	7.970	306.830	1171.53	-27.44	57.27	-66.19	40°19'09.883"N	104°23'50.277"W	0.61	
1267.00	9.180	305.630	1260.53	-30.59	65.20	-77.02	40°19'09.962"N	104°23'50.416"W	1.36	
1353.00	8.750	304.510	1345.48	-33.49	72.90	-87.98	40°19'10.038"N	104°23'50.558"W	0.54	
1442.00	7.970	303.780	1433.53	-36.08	80.16	-98.69	40°19'10.109"N	104°23'50.696"W	0.88	
1529.00	8.470	308.110	1519.64	-38.96	87.47	-108.74	40°19'10.182"N	104°23'50.826"W	0.91	
1572.00	8.260	307.020	1562.18	-40.58	91.29	-113.70	40°19'10.219"N	104°23'50.890"W	0.61	
1667.00	9.730	302.630	1656.01	-43.68	99.72	-125.91	40°19'10.303"N	104°23'51.048"W	1.71	
1755.00	13.400	300.640	1742.21	-46.40	108.93	-140.95	40°19'10.394"N	104°23'51.242"W	4.19	
1842.00	15.220	302.840	1826.51	-49.84	120.27	-159.22	40°19'10.506"N	104°23'51.478"W	2.18	
1930.00	16.270	300.430	1911.20	-53.57	132.77	-179.56	40°19'10.629"N	104°23'51.740"W	1.41	
2019.00	19.060	293.930	1996.01	-55.61	144.99	-203.60	40°19'10.750"N	104°23'52.051"W	3.83	
2107.00	22.220	286.720	2078.36	-54.24	155.61	-232.68	40°19'10.855"N	104°23'52.426"W	4.60	
2195.00	23.590	285.300	2159.42	-50.29	165.04	-265.60	40°19'10.948"N	104°23'52.851"W	1.68	
2283.00	24.250	284.910	2239.86	-45.64	174.34	-300.05	40°19'11.040"N	104°23'53.296"W	0.77	
2372.00	24.100	281.540	2321.06	-39.71	182.67	-335.51	40°19'11.122"N	104°23'53.754"W	1.56	
2460.00	24.170	279.910	2401.37	-32.30	189.37	-370.86	40°19'11.189"N	104°23'54.210"W	0.76	

Actual Wellpath Report

LATHAM K31-O34-14HNB AWP

Page 3 of 8



**BAKER
HUGHES**

REFERENCE WELLPATH IDENTIFICATION			
Operator	BONANZA CREEK ENERGY	Slot	SLOT#09 LATHAM K31-O34-14HNB (272'FNL & 332'FEL, SEC.14)
Area	COLORADO	Well	LATHAM K31-O34-14HNB
Field	WELD COUNTY (NAD83/TRUE)	Wellbore	LATHAM K31-O34-14HNB AWP
Facility	SEC.14-T04N-R63W		

WELLPATH DATA (132 stations)										
MD [ft]	Inclination [°]	Azimuth [°]	TVD [ft]	Vert Sect [ft]	North [ft]	East [ft]	Latitude	Longitude	DLS [°/100ft]	Comments
2548.00	23.900	282.990	2481.74	-25.37	196.48	-405.98	40°19'11.259"N	104°23'54.663"W	1.46	
2636.00	24.800	282.070	2561.91	-19.02	204.34	-441.40	40°19'11.337"N	104°23'55.121"W	1.11	
2722.00	25.010	278.100	2639.92	-11.17	210.68	-477.04	40°19'11.399"N	104°23'55.581"W	1.96	
2899.00	23.500	279.850	2801.30	5.99	221.99	-548.86	40°19'11.511"N	104°23'56.508"W	0.94	
2986.00	23.350	284.060	2881.13	12.38	229.14	-582.67	40°19'11.582"N	104°23'56.944"W	1.93	
3074.00	23.910	284.380	2961.75	17.52	237.81	-616.87	40°19'11.667"N	104°23'57.386"W	0.65	
3162.00	23.030	283.770	3042.47	22.71	246.33	-650.86	40°19'11.751"N	104°23'57.825"W	1.04	
3249.00	22.890	287.470	3122.58	26.84	255.47	-683.53	40°19'11.842"N	104°23'58.247"W	1.67	
3425.00	23.200	291.640	3284.55	30.48	278.53	-748.41	40°19'12.070"N	104°23'59.084"W	0.94	
3514.00	23.320	290.140	3366.32	31.53	291.06	-781.24	40°19'12.193"N	104°23'59.508"W	0.68	
3602.00	24.260	282.330	3446.86	35.50	300.92	-815.27	40°19'12.291"N	104°23'59.947"W	3.73	
3691.00	24.000	275.850	3528.09	43.98	306.67	-851.14	40°19'12.348"N	104°24'00.410"W	2.99	
3780.00	22.870	271.880	3609.76	55.32	309.08	-886.43	40°19'12.371"N	104°24'00.866"W	2.18	
3868.00	22.500	277.340	3690.96	65.80	311.79	-920.23	40°19'12.398"N	104°24'01.302"W	2.43	
3956.00	22.510	285.660	3772.28	72.27	318.49	-953.16	40°19'12.464"N	104°24'01.727"W	3.62	
4044.00	22.940	289.910	3853.45	75.11	328.88	-985.50	40°19'12.567"N	104°24'02.145"W	1.93	
4133.00	22.460	290.200	3935.56	76.64	340.66	-1017.77	40°19'12.683"N	104°24'02.562"W	0.55	
4220.00	21.940	294.410	4016.11	76.82	353.11	-1048.17	40°19'12.806"N	104°24'02.954"W	1.92	
4396.00	22.980	297.600	4178.77	72.79	382.62	-1108.56	40°19'13.098"N	104°24'03.734"W	0.91	
4484.00	22.870	292.340	4259.82	71.37	397.08	-1139.60	40°19'13.241"N	104°24'04.135"W	2.33	
4573.00	22.360	289.420	4341.98	72.39	409.28	-1171.56	40°19'13.361"N	104°24'04.547"W	1.39	
4660.00	23.020	291.800	4422.25	73.54	421.10	-1202.97	40°19'13.478"N	104°24'04.953"W	1.30	
4749.00	22.660	289.460	4504.27	74.72	433.28	-1235.29	40°19'13.599"N	104°24'05.370"W	1.10	
4837.00	22.490	286.280	4585.54	77.51	443.64	-1267.43	40°19'13.701"N	104°24'05.785"W	1.40	
4926.00	22.930	283.150	4667.64	82.23	452.36	-1300.65	40°19'13.787"N	104°24'06.214"W	1.44	
5013.00	22.970	275.100	4747.77	90.12	457.73	-1334.07	40°19'13.840"N	104°24'06.645"W	3.61	
5101.00	22.500	269.390	4828.94	101.92	459.07	-1368.02	40°19'13.853"N	104°24'07.083"W	2.56	
5189.00	21.500	275.290	4910.55	113.35	460.38	-1400.92	40°19'13.866"N	104°24'07.508"W	2.76	
5277.00	18.550	277.060	4993.22	121.90	463.59	-1430.87	40°19'13.898"N	104°24'07.895"W	3.42	
5365.00	20.100	289.200	5076.29	126.55	470.29	-1459.06	40°19'13.964"N	104°24'08.259"W	4.88	

Actual Wellpath Report

LATHAM K31-O34-14HNB AWP

Page 4 of 8



**BAKER
HUGHES**

REFERENCE WELLPATH IDENTIFICATION			
Operator	BONANZA CREEK ENERGY	Slot	SLOT#09 LATHAM K31-O34-14HNB (272'FNL & 332'FEL, SEC.14)
Area	COLORADO	Well	LATHAM K31-O34-14HNB
Field	WELD COUNTY (NAD83/TRUE)	Wellbore	LATHAM K31-O34-14HNB AWP
Facility	SEC.14-T04N-R63W		

WELLPATH DATA (132 stations)										
MD [ft]	Inclination [°]	Azimuth [°]	TVD [ft]	Vert Sect [ft]	North [ft]	East [ft]	Latitude	Longitude	DLS [°/100ft]	Comments
5454.00	23.700	290.850	5158.85	128.01	481.69	-1490.23	40°19'14.077"N	104°24'08.661"W	4.10	
5540.00	23.330	289.580	5237.71	129.43	493.54	-1522.42	40°19'14.194"N	104°24'09.077"W	0.73	
5628.00	21.460	290.930	5319.07	130.82	505.14	-1553.88	40°19'14.308"N	104°24'09.483"W	2.20	
5717.00	22.090	295.240	5401.73	130.52	518.09	-1584.23	40°19'14.436"N	104°24'09.875"W	1.93	
5805.00	23.920	289.960	5482.73	130.58	531.24	-1615.97	40°19'14.566"N	104°24'10.285"W	3.13	
5893.00	23.790	281.740	5563.24	134.75	540.94	-1650.12	40°19'14.662"N	104°24'10.726"W	3.78	
5981.00	23.690	281.740	5643.79	141.43	548.15	-1684.81	40°19'14.733"N	104°24'11.173"W	0.11	
6070.00	23.110	281.560	5725.47	148.14	555.29	-1719.43	40°19'14.804"N	104°24'11.620"W	0.66	
6158.00	22.690	260.020	5806.68	160.61	555.81	-1753.12	40°19'14.809"N	104°24'12.055"W	9.49	
6245.00	26.770	237.230	5885.86	185.84	542.26	-1786.21	40°19'14.675"N	104°24'12.483"W	11.83	
6334.00	34.080	230.560	5962.58	224.42	515.52	-1822.38	40°19'14.411"N	104°24'12.949"W	9.04	
6422.00	41.440	220.320	6032.17	274.05	477.57	-1860.36	40°19'14.036"N	104°24'13.440"W	10.96	
6509.00	45.800	203.680	6095.35	332.88	426.87	-1891.63	40°19'13.535"N	104°24'13.843"W	14.08	
6598.00	52.290	196.430	6153.70	399.90	363.77	-1914.44	40°19'12.911"N	104°24'14.138"W	9.53	
6687.00	55.520	197.050	6206.12	471.43	294.91	-1935.16	40°19'12.231"N	104°24'14.405"W	3.67	
6774.00	59.840	195.580	6252.63	544.49	224.36	-1955.79	40°19'11.534"N	104°24'14.671"W	5.17	
6861.00	69.880	191.800	6289.55	622.16	147.93	-1974.29	40°19'10.778"N	104°24'14.910"W	12.19	
6950.00	77.030	184.400	6314.91	704.61	63.58	-1986.20	40°19'09.945"N	104°24'15.064"W	11.31	
7038.00	84.110	183.870	6329.32	786.90	-22.95	-1992.45	40°19'09.090"N	104°24'15.144"W	8.07	
7126.00	89.660	181.970	6334.10	869.60	-110.67	-1996.92	40°19'08.223"N	104°24'15.202"W	6.66	
7214.00	90.250	178.260	6334.17	950.89	-198.65	-1997.09	40°19'07.353"N	104°24'15.204"W	4.27	
7302.00	90.150	176.780	6333.86	1030.59	-286.57	-1993.29	40°19'06.485"N	104°24'15.155"W	1.69	
7391.00	90.120	176.690	6333.65	1110.68	-375.42	-1988.22	40°19'05.607"N	104°24'15.090"W	0.11	
7478.00	89.850	176.120	6333.68	1188.74	-462.25	-1982.76	40°19'04.749"N	104°24'15.019"W	0.72	
7567.00	90.030	175.760	6333.77	1268.28	-551.03	-1976.46	40°19'03.871"N	104°24'14.938"W	0.45	
7655.00	90.060	175.880	6333.70	1346.84	-638.79	-1970.05	40°19'03.004"N	104°24'14.855"W	0.14	
7744.00	90.030	176.220	6333.63	1426.45	-727.58	-1963.92	40°19'02.127"N	104°24'14.775"W	0.38	
7831.00	90.030	177.280	6333.59	1504.75	-814.44	-1958.98	40°19'01.268"N	104°24'14.712"W	1.22	
7919.00	89.970	177.960	6333.59	1584.51	-902.37	-1955.33	40°19'00.400"N	104°24'14.664"W	0.78	
8008.00	89.940	178.930	6333.66	1665.72	-991.33	-1952.91	40°18'59.520"N	104°24'14.633"W	1.09	

Actual Wellpath Report

LATHAM K31-O34-14HNB AWP

Page 5 of 8



**BAKER
HUGHES**

REFERENCE WELLPATH IDENTIFICATION			
Operator	BONANZA CREEK ENERGY	Slot	SLOT#09 LATHAM K31-O34-14HNB (272'FNL & 332'FEL, SEC.14)
Area	COLORADO	Well	LATHAM K31-O34-14HNB
Field	WELD COUNTY (NAD83/TRUE)	Wellbore	LATHAM K31-O34-14HNB AWP
Facility	SEC.14-T04N-R63W		

WELLPATH DATA (132 stations)

MD [ft]	Inclination [°]	Azimuth [°]	TVD [ft]	Vert Sect [ft]	North [ft]	East [ft]	Latitude	Longitude	DLS [°/100ft]	Comments
8096.00	90.000	179.690	6333.70	1746.55	-1079.32	-1951.85	40°18'58.651"N	104°24'14.619"W	0.87	
8185.00	89.970	179.820	6333.72	1828.57	-1168.32	-1951.47	40°18'57.771"N	104°24'14.614"W	0.15	
8271.00	90.030	179.560	6333.72	1907.78	-1254.32	-1951.01	40°18'56.922"N	104°24'14.608"W	0.31	
8359.00	90.620	179.540	6333.23	1988.75	-1342.32	-1950.32	40°18'56.052"N	104°24'14.599"W	0.67	
8445.00	90.770	184.540	6332.18	2069.24	-1428.23	-1953.38	40°18'55.203"N	104°24'14.639"W	5.82	
8534.00	90.980	189.600	6330.82	2154.96	-1516.51	-1964.33	40°18'54.331"N	104°24'14.780"W	5.69	
8710.00	89.690	183.840	6329.79	2324.16	-1691.22	-1984.91	40°18'52.604"N	104°24'15.045"W	3.35	
8798.00	89.630	179.180	6330.31	2406.24	-1779.17	-1987.23	40°18'51.735"N	104°24'15.075"W	5.30	
8887.00	89.880	178.080	6330.70	2487.56	-1868.14	-1985.10	40°18'50.856"N	104°24'15.048"W	1.27	
8974.00	90.550	176.660	6330.37	2566.26	-1955.05	-1981.11	40°18'49.997"N	104°24'14.996"W	1.80	
9062.00	89.720	174.900	6330.16	2644.79	-2042.80	-1974.63	40°18'49.130"N	104°24'14.912"W	2.21	
9150.00	89.570	172.790	6330.71	2721.93	-2130.29	-1965.20	40°18'48.265"N	104°24'14.791"W	2.40	
9238.00	89.350	172.170	6331.54	2798.05	-2217.53	-1953.68	40°18'47.403"N	104°24'14.642"W	0.75	
9282.00	89.600	173.570	6331.94	2836.25	-2261.18	-1948.22	40°18'46.972"N	104°24'14.571"W	3.23	
9326.00	89.380	173.080	6332.33	2874.63	-2304.88	-1943.11	40°18'46.540"N	104°24'14.505"W	1.22	
9414.00	90.250	173.680	6332.61	2951.43	-2392.30	-1932.96	40°18'45.676"N	104°24'14.374"W	1.20	
9503.00	89.970	178.840	6332.44	3031.16	-2481.08	-1927.16	40°18'44.799"N	104°24'14.299"W	5.81	
9590.00	89.940	182.520	6332.51	3111.86	-2568.05	-1928.19	40°18'43.940"N	104°24'14.312"W	4.23	
9679.00	90.030	182.070	6332.54	3195.33	-2656.98	-1931.76	40°18'43.061"N	104°24'14.358"W	0.52	
9767.00	90.150	178.400	6332.40	3276.69	-2744.97	-1932.12	40°18'42.191"N	104°24'14.363"W	4.17	
9855.00	90.060	176.120	6332.24	3356.22	-2832.86	-1927.91	40°18'41.323"N	104°24'14.309"W	2.59	
9943.00	90.120	176.090	6332.10	3434.98	-2920.66	-1921.93	40°18'40.455"N	104°24'14.231"W	0.08	
10032.00	90.000	175.980	6332.00	3514.58	-3009.44	-1915.78	40°18'39.578"N	104°24'14.152"W	0.18	
10120.00	90.090	177.330	6331.94	3593.71	-3097.29	-1910.65	40°18'38.710"N	104°24'14.085"W	1.54	
10207.00	89.970	181.560	6331.89	3673.68	-3184.27	-1909.80	40°18'37.850"N	104°24'14.074"W	4.86	
10295.00	90.120	181.300	6331.82	3755.74	-3272.24	-1912.00	40°18'36.981"N	104°24'14.103"W	0.34	
10384.00	90.250	178.540	6331.53	3837.85	-3361.23	-1911.87	40°18'36.102"N	104°24'14.101"W	3.10	
10472.00	89.780	177.980	6331.51	3918.03	-3449.19	-1909.20	40°18'35.232"N	104°24'14.066"W	0.83	
10559.00	90.030	180.330	6331.65	3997.84	-3536.17	-1907.92	40°18'34.373"N	104°24'14.050"W	2.72	
10647.00	90.150	181.050	6331.52	4079.48	-3624.17	-1908.98	40°18'33.503"N	104°24'14.063"W	0.83	

Actual Wellpath Report

LATHAM K31-O34-14HNB AWP

Page 6 of 8



**BAKER
HUGHES**

REFERENCE WELLPATH IDENTIFICATION			
Operator	BONANZA CREEK ENERGY	Slot	SLOT#09 LATHAM K31-O34-14HNB (272'FNL & 332'FEL, SEC.14)
Area	COLORADO	Well	LATHAM K31-O34-14HNB
Field	WELD COUNTY (NAD83/TRUE)	Wellbore	LATHAM K31-O34-14HNB AWP
Facility	SEC.14-T04N-R63W		

WELLPATH DATA (132 stations)										
MD [ft]	Inclination [°]	Azimuth [°]	TVD [ft]	Vert Sect [ft]	North [ft]	East [ft]	Latitude	Longitude	DLS [°/100ft]	Comments
10735.00	91.940	181.550	6329.91	4161.46	-3712.13	-1910.98	40°18'32.634"N	104°24'14.089"W	2.11	
10824.00	92.430	181.060	6326.52	4244.32	-3801.04	-1913.00	40°18'31.756"N	104°24'14.115"W	0.78	
10912.00	92.430	180.650	6322.79	4325.98	-3888.95	-1914.31	40°18'30.887"N	104°24'14.132"W	0.47	
11000.00	92.340	180.760	6319.13	4407.56	-3976.87	-1915.39	40°18'30.018"N	104°24'14.146"W	0.16	
11089.00	92.610	180.770	6315.28	4490.10	-4065.77	-1916.58	40°18'29.139"N	104°24'14.161"W	0.30	
11177.00	92.520	179.750	6311.34	4571.41	-4153.68	-1916.98	40°18'28.271"N	104°24'14.166"W	1.16	
11263.00	90.950	178.330	6308.74	4650.20	-4239.63	-1915.54	40°18'27.421"N	104°24'14.147"W	2.46	
11351.00	89.910	177.840	6308.08	4730.27	-4327.58	-1912.60	40°18'26.552"N	104°24'14.109"W	1.31	
11440.00	89.970	177.560	6308.17	4810.99	-4416.50	-1909.03	40°18'25.674"N	104°24'14.063"W	0.32	
11529.00	89.940	177.120	6308.24	4891.48	-4505.41	-1904.90	40°18'24.795"N	104°24'14.010"W	0.50	
11537.00	89.880	176.880	6308.25	4898.70	-4513.40	-1904.48	40°18'24.716"N	104°24'14.004"W	3.09	Last BHI MWD Survey
11562.00	89.880	176.880	6308.31	4921.22	-4538.36	-1903.12	40°18'24.469"N	104°24'13.987"W	0.00	Projection to Bit

HOLE & CASING SECTIONS									
- Ref Wellbore: LATHAM K31-O34-14HNB AWP					Ref Wellpath: LATHAM K31-O34-14HNB AWP				
String/Diameter	Start MD [ft]	End MD [ft]	Interval [ft]	Start TVD [ft]	End TVD [ft]	Start N/S [ft]	Start E/W [ft]	End N/S [ft]	End E/W [ft]
9.625in Casing Surface	17.00	1616.00	1599.00	17.00	1605.68	0.00	0.00	95.14	-119.03

Actual Wellpath Report

LATHAM K31-O34-14HNB AWP

Page 7 of 8



REFERENCE WELLPATH IDENTIFICATION			
Operator	BONANZA CREEK ENERGY	Slot	SLOT#09 LATHAM K31-O34-14HNB (272'FNL & 332'FEL,SEC.14)
Area	COLORADO	Well	LATHAM K31-O34-14HNB
Field	WELD COUNTY (NAD83/TRUE)	Wellbore	LATHAM K31-O34-14HNB AWB
Facility	SEC.14-T04N-R63W		

TARGETS								
Name	TVD [ft]	North [ft]	East [ft]	Grid East [US ft]	Grid North [US ft]	Latitude	Longitude	Shape
LATHAM K31-O34-14HNB BHL PLAT (470'FSL & 2269'FEL,SEC.14)	6310.70	-4572.27	-1903.31	3305691.46	1356462.64	40°18'24.134"N	104°24'13.989"W	point
LATHAM K31-O34-14HNB LP PLAT (260'FNL & 2311'FEL,SEC.14)	6310.70	-30.01	-1978.45	3305559.84	1361003.40	40°19'09.020"N	104°24'14.964"W	point
LATHAM K31-O34-14HNB BHL REV-2 (470'FSL & 2269'FEL,SEC.14)	6331.00	-4572.27	-1903.31	3305691.46	1356462.64	40°18'24.134"N	104°24'13.989"W	point
LATHAM K31-O34-14HNB LP REV-2 (260'FNL & 2311'FEL,SEC.14)	6331.00	-30.01	-1978.45	3305559.84	1361003.40	40°19'09.020"N	104°24'14.964"W	point
SEC.14-T04N-R63W (470'FSL,260'FOL)	16619.70	-2334.89	-2297.23	3305269.76	1358694.84	40°18'46.243"N	104°24'19.076"W	polygon
SEC.14-T04N-R63W	16620.70	-2413.87	-2296.04	3305271.94	1358615.89	40°18'45.463"N	104°24'19.061"W	polygon

WELLPATH COMPOSITION - Ref Wellbore: LATHAM K31-O34-14HNB AWB					Ref Wellpath: LATHAM K31-O34-14HNB AWP	
Start MD [ft]	End MD [ft]	Positional Uncertainty Model	Log Name/Comment		Wellbore	
17.00	1572.00	BHI NaviTrak (Rotating)	BHI NAVITRAK MWD 13.5" (ROTATING)<121-1572>		LATHAM K31-O34-14HNB AWB	
1572.00	11537.00	BHI AutoTrak Curve (Short)	BHI ATC 8.5" (SHORT)<1667-11537>		LATHAM K31-O34-14HNB AWB	
11537.00	11562.00	Blind Drilling (std)	Projection to bit		LATHAM K31-O34-14HNB AWB	

Actual Wellpath Report

LATHAM K31-O34-14HNB AWP

Page 8 of 8



REFERENCE WELLPATH IDENTIFICATION

Operator	BONANZA CREEK ENERGY	Slot	SLOT#09 LATHAM K31-O34-14HNB (272'FNL & 332'FEL, SEC.14)
Area	COLORADO	Well	LATHAM K31-O34-14HNB
Field	WELD COUNTY (NAD83/TRUE)	Wellbore	LATHAM K31-O34-14HNB AWB
Facility	SEC.14-T04N-R63W		

WELLPATH COMMENTS

MD [ft]	Inclination [°]	Azimuth [°]	TVD [ft]	Comment
11537.00	89.880	176.880	6308.25	Last BHI MWD Survey
11562.00	89.880	176.880	6308.31	Projection to Bit