



November 5, 2019

VIA ELECTRONIC TRANSMITTAL

Department of Natural Resources  
Oil and Gas Conservation Commission  
The Chancery Building  
Attn: Jeff Robbins, Director  
1120 Lincoln St., Suite 801  
Denver, CO 80203

Re: **30-Day Certification Letter – Rule 318A.e**

<u>Well Name</u>	<u>Well Head Location (SHL)</u>			
Johnson 01N-65W-30-10H	230	FSL	1811	FWL

Dear COGCC Director,

Verdad Resources LLC (Verdad) hereby certifies to the Director that that a thirty (30-day) notice has been given by certified mail to all owners in the proposed 400-acre wellbore spacing unit. This notice was received on 9/18/2019 The proposed 400-acre wellbore spacing unit for the Johnson 01N-65W-30-10H well consists of:

**Township 1N, Range 65W**  
Section 19: SW4SE4, SWSE4  
Section 30: E2W2, W2E2

We have not received any objections to such well location or proposed spacing unit, there Verdad hereby requests the Director to approve the proposed well.

If you should have any questions or concerns regarding this permit, please contact the undersigned at 720-845-6909.

Sincerely,

A handwritten signature in black ink that reads "Allison Schieber".

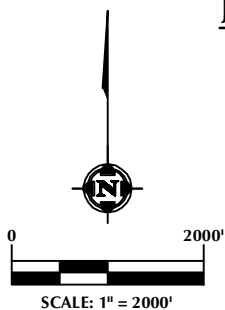
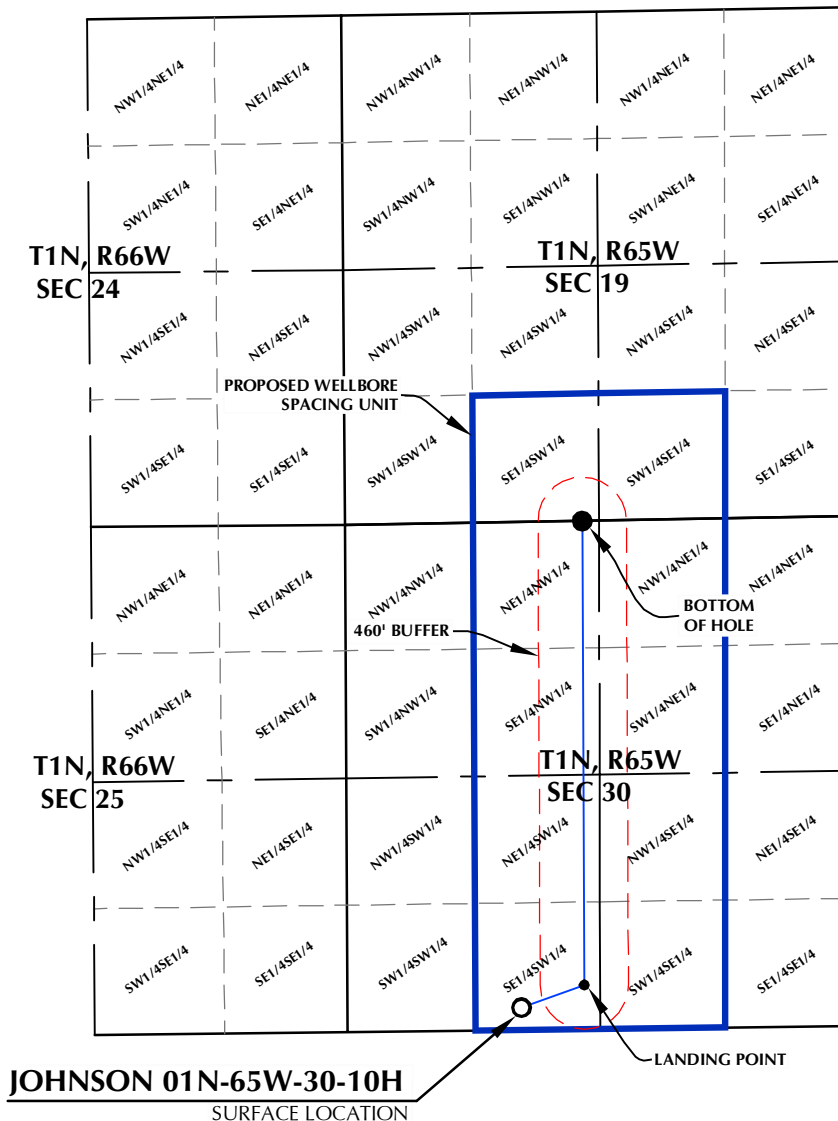
Allison Schieber  
Sr. Regulatory Analyst  
Verdad Oil and Gas Corporation

**SURFACE LOCATION**  
 GROUND ELEVATION= 5000.0'  
 LATITUDE= 40.015685°  
 LONGITUDE= -104.709684°  
 1/4 1/4: SE1/4 SW1/4

**LANDING POINT**  
 LATITUDE= 40.016322°  
 LONGITUDE= -104.707333°  
 1/4 1/4: SE1/4 SW1/4

**BOTTOM HOLE LOCATION**  
 LATITUDE= 40.029589°  
 LONGITUDE= -104.707260°  
 1/4 1/4: NE1/4 NW1/4

# JOHNSON 01N-65W-30-10H WELLBORE SPACING UNIT



## NOTES:

1. DRAWING LATITUDE AND LONGITUDE COORDINATES ARE NAD 83 (2011)(EPOCH:2010).
2. ELEVATION BASED ON NAVD88 (GEOID12B).
3. BASIS OF BEARING DERIVED FROM COLORADO COORDINATE SYSTEM OF 1983 NORTH ZONE.
4. ALL MEASURED DISTANCES ARE GRID. COMBINED SCALE FACTOR: .99972799 CALCULATED FROM THE W. 1/4 CORNER OF SECTION 30, T1N, R65W.

## WELL PAD - JOHNSON 01N-65W-30

JOHNSON 01N-65W-30-10H  
 WELLBORE SPACING UNIT  
 230' FSL & 1811' FWL (SESW) (SURFACE)  
 460' FSL & 2468' FWL (SESW) (LANDING POINT)  
 1' FNL & 2468' FWL (NENW) (BOTTOM)  
 LOCATED IN SECTION 30  
 T1N, R65W, 6TH P.M.  
 WELD COUNTY, COLORADO



5950 Cedar Springs Road, Suite 200  
 Dallas, Texas 75235



## CONSULTING, LLC

SHERIDAN OFFICE  
 1095 Saberton Avenue  
 Sheridan, Wyoming 82801  
 Phone 307-674-0609

LOVELAND OFFICE  
 6706 North Franklin Avenue  
 Loveland, Colorado 80538  
 Phone 970-776-4331

DRAFTED BY:	LMO	CHECKED BY:	ERB
DATE DRAFTED:	1/30/18	DATE SURVEYED:	2/12/2020
REVISED:	2/18/2020	FILE NAME:	17-171