

February 11, 2020

Ms. Kate Graves  
Senior HSE Representative  
Kerr-McGee Oil & Gas Onshore LP  
501 N Division Blvd  
Platteville, Colorado 80651

**RE: Form 4 Sundry Notice – Final Reclamation  
Kerr-McGee Oil & Gas Onshore LP (Operator: 47120)  
THOMASON 25-16, Location ID: 329312  
NESW S16-T2N-R65W  
Weld County, Colorado**

Dear Ms. Graves:

LT Environmental, Inc. (LTE) was contracted by Kerr-McGee Oil & Gas Onshore LP (Kerr-McGee) to complete final reclamation inspections at plugged and abandoned (P&A) well sites located in Weld County, CO. The reclamation inspections were conducted in accordance with Colorado Oil and Gas Conservation Commission (COGCC) Rule 1004.

The former THOMASON 25-16 well (API: 05-123-33482) was P&A'd on October 5, 2011 according to Form 6 Document Number 400233771; the former THOMASON 25-16 well is located on an active pad (Location ID: 329312). On January 3, 2020, LTE conducted a final reclamation inspection and determined that the location is, in compliance with final reclamation requirements per COGCC Rule 1004. The associated active tank battery is located 0.35 miles south west of the well pad. The former THOMASON 25-16 well pad remains in use servicing Kerr-McGee producing wells: API: 05-123-33477; API: 05-123-33480; API: 05-123-33478; API: 05-123-34529; API: 05-123-33479 and API: 05-123-33481. All disturbed areas have been compacted and stabilized with roadbase to minimize erosion. LTE personnel located the P&A wellhead location using a handheld Trimble (R1) Global Positioning System (GPS) unit and latitude and longitude coordinates obtained from the COGCC online database. A general site location map is included as Figure 1; and the Site Map displaying the location of the reclaimed site on a 2020 aerial imagery is included as Figure 2. Photographs of the P&A location were taken facing each cardinal direction from the P&A wellhead location. The photographic log is included as Attachment 1.

Based on the successful reclamation of the THOMASON 25-16 site, a Form 4 Sundry Notice requesting final reclamation status has been prepared for the submittal to the COGCC. This letter will be included as an attachment to the electronic Form 4 submittal.



If you have any questions or need additional information, please do not hesitate to contact us.

Sincerely,

LT ENVIRONMENTAL, INC.

A handwritten signature in black ink, appearing to read 'Stacey Baum', written in a cursive style.

STACEY BAUM  
STAT BIOLOGIST

A handwritten signature in black ink, appearing to read 'Brian Sulzberger', written in a cursive style.

Brian Sulzberger, P.E.  
Senior Engineer

Attachments:

- Figure 1 Site Location Map
- Figure 2 Site Map
- Attachment 1 Photographic Log



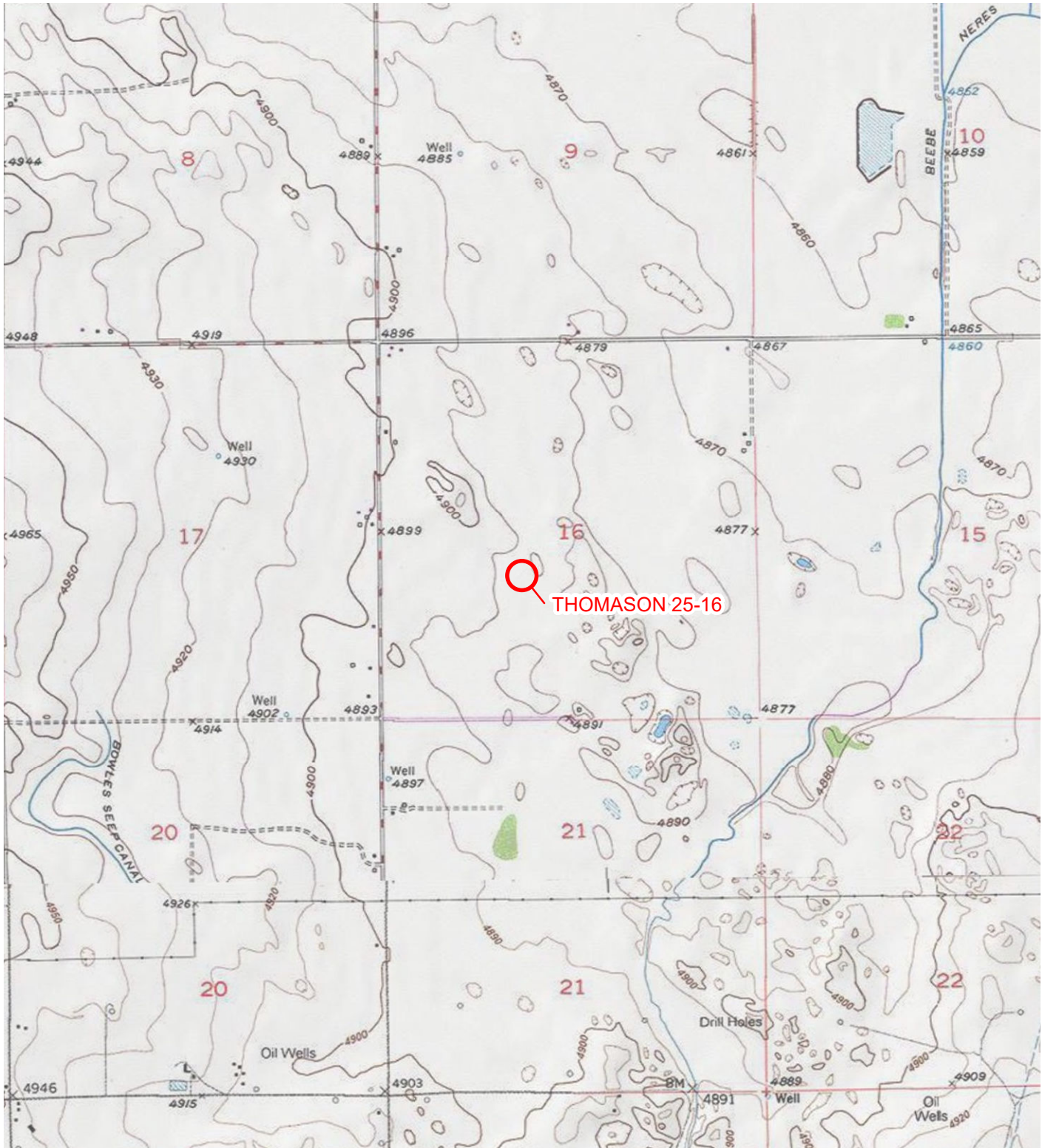

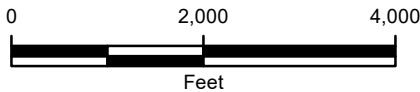


IMAGE COURTESY OF ESRI/USGS

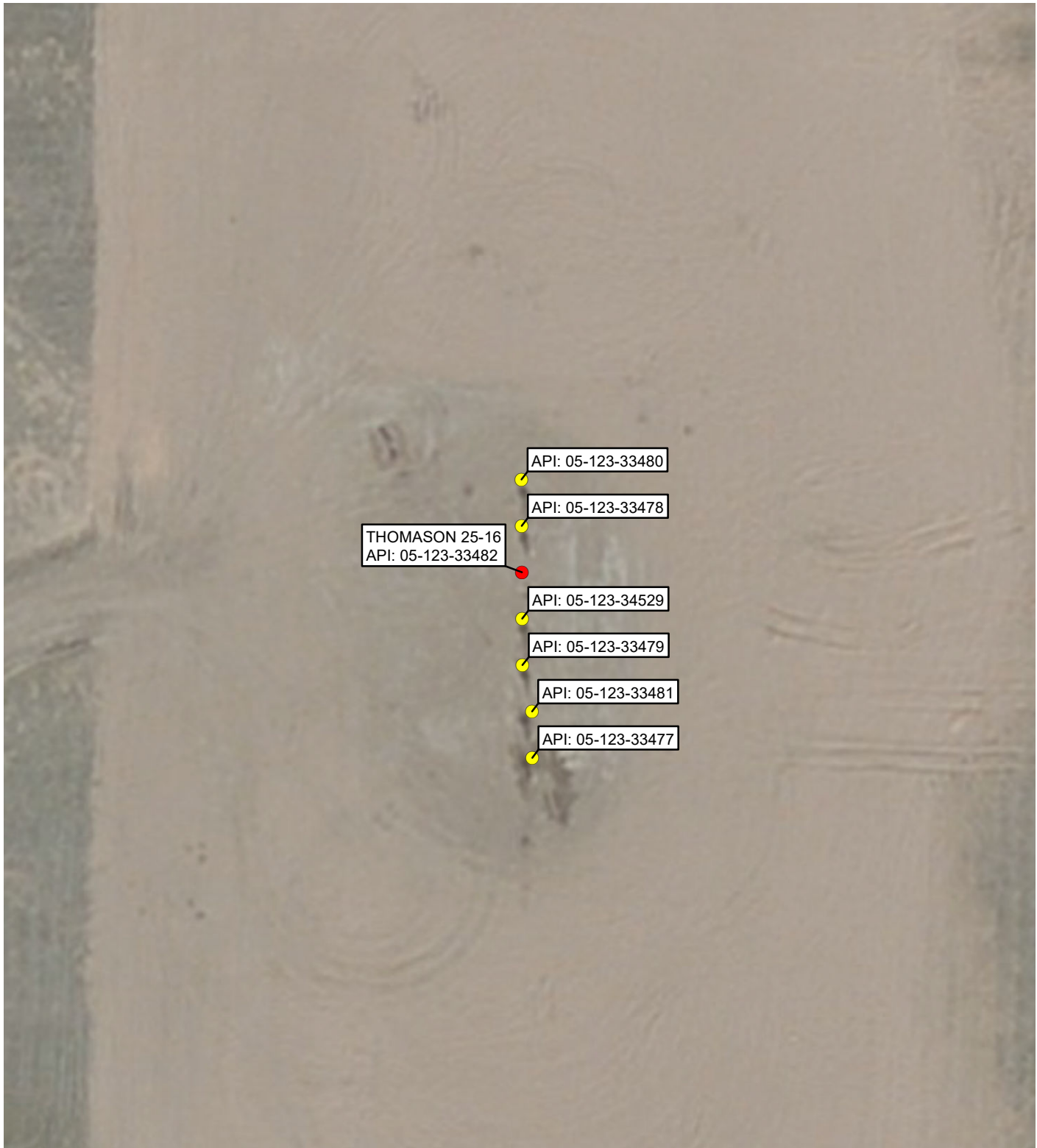
**LEGEND**

 SITE LOCATION



**FIGURE 1**  
**SITE LOCATION MAP**  
**THOMASON 25-16**  
**NESW SEC 16-T2N-R65W**  
**WELD COUNTY, COLORADO**  
**KERR-MCGEE OIL & GAS ONSHORE LP**

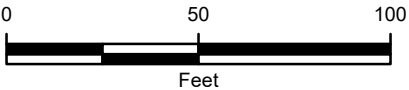




**LEGEND**

- PLUGGED AND ABANDONED WELL
- WELLHEAD

IMAGE COURTESY OF ESRI



**FIGURE 2**  
**SITE MAP**  
**THOMASON 25-16**  
**NESW SEC 16-T2N-R65W**  
**WELD COUNTY, COLORADO**  
**KERR-MCGEE OIL & GAS ONSHORE LP**



## PHOTOGRAPHIC LOG



**Photograph 1:** View facing north as required in Colorado Oil and Gas Conservation Commission (COGCC) Rule 1004.



**Photograph 2:** View facing east as required in COGCC Rule 1004.

## PHOTOGRAPHIC LOG



**Photograph 3:** View facing south as required in COGCC Rule 1004.



**Photograph 4:** View facing west as required in COGCC Rule 1004.

## PHOTOGRAPHIC LOG



**Photograph 5:** Overall site view per COGCC Rule 1004.