



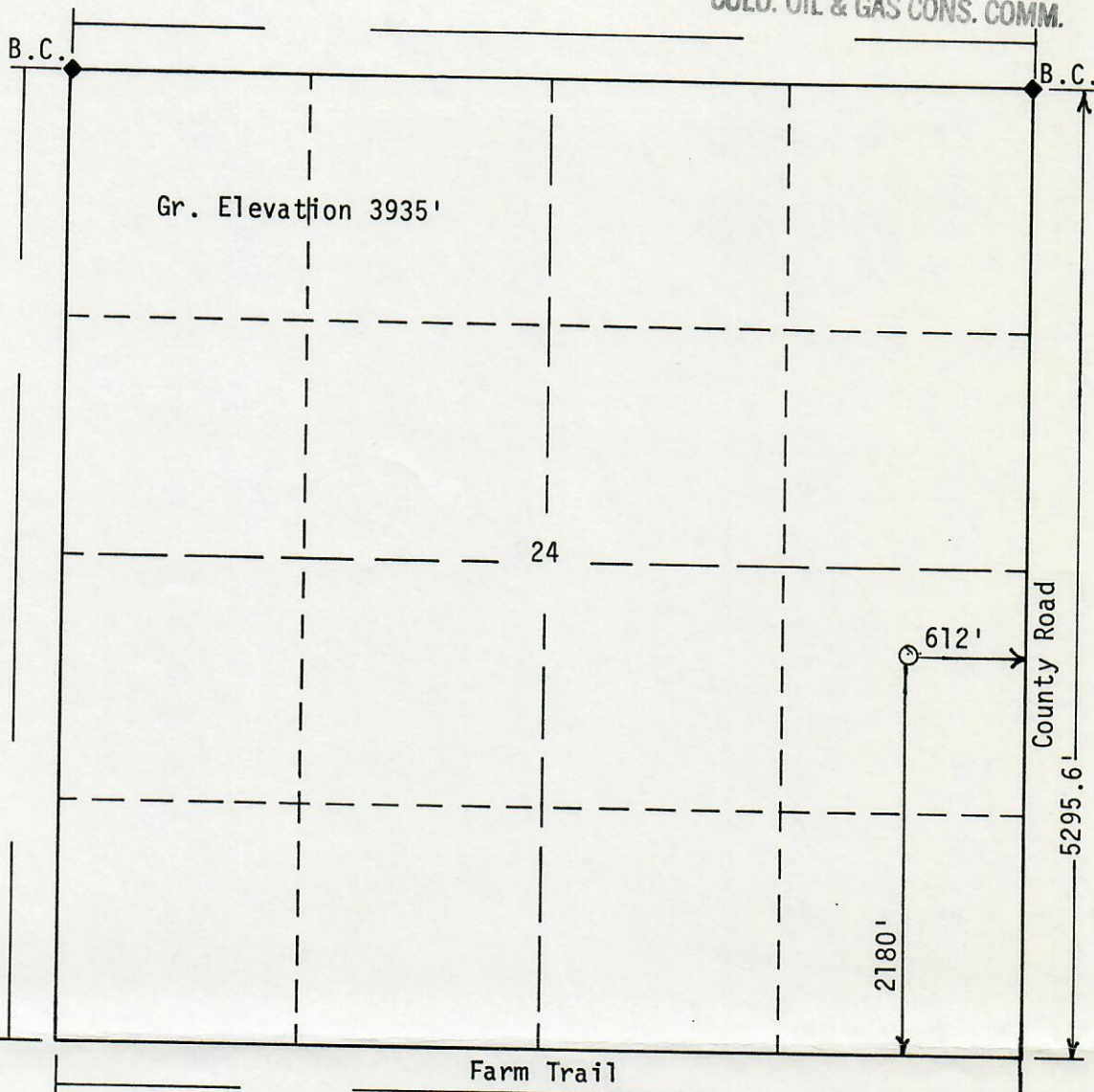
Form PS-102

R.42 W



00522757

N



BEST IMAGE
AVAILABLE

Scale: 1"=1000'

Powers Elevation, Inc. of Denver, Colorado has in accordance with a request from Pat Ungleich for Mull Drilling Co., Inc.

determined the location of #7 Mu11

to be 2180fs1, 612fe1

Range 42 W of the 6th Principal

Cheyenne County, Colorado

Section 24 , Township 15 S
Meridian,

I hereby certify that this plat is an accurate representation of a correct survey showing the location of #7 Mu11

Date: 4-22-88

Licensed Land Surveyor No. 23501
State of Colorado

