

WELL LOCATION CERTIFICATE  
INDEPENDENCE D18-759

SECTION 19, TOWNSHIP 3 NORTH, RANGE 64 WEST  
OF THE 6TH P.M., WELD COUNTY

APPROVED

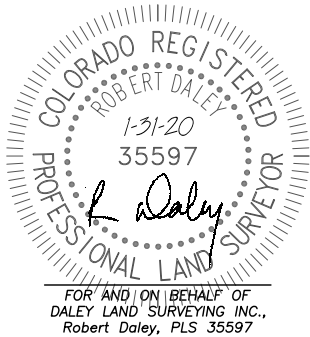
By James Rouse at 7:52 am, Feb 05, 2020

IN ACCORDANCE WITH A REQUEST FROM TYLER BEAVERS OF NOBLE ENERGY INC., DALEY LAND SURVEYING, INC. HAS DETERMINED THE SURFACE LOCATION OF THE INDEPENDENCE D18-759 WELL TO BE 480' FNL, 1638' FWL, AS MEASURED AT NINETY (90) DEGREES FROM THE SECTION LINES OF SECTION 19, TOWNSHIP 3 NORTH, RANGE 64 WEST AND THE BOTTOM HOLE LOCATION TO BE 200' FNL, 1088' FWL, AS MEASURED AT NINETY (90) DEGREES FROM THE SECTION LINES OF SECTION 7, TOWNSHIP 3 NORTH, RANGE 64 WEST, OF THE 6TH PRINCIPAL MERIDIAN, WELD COUNTY, COLORADO.

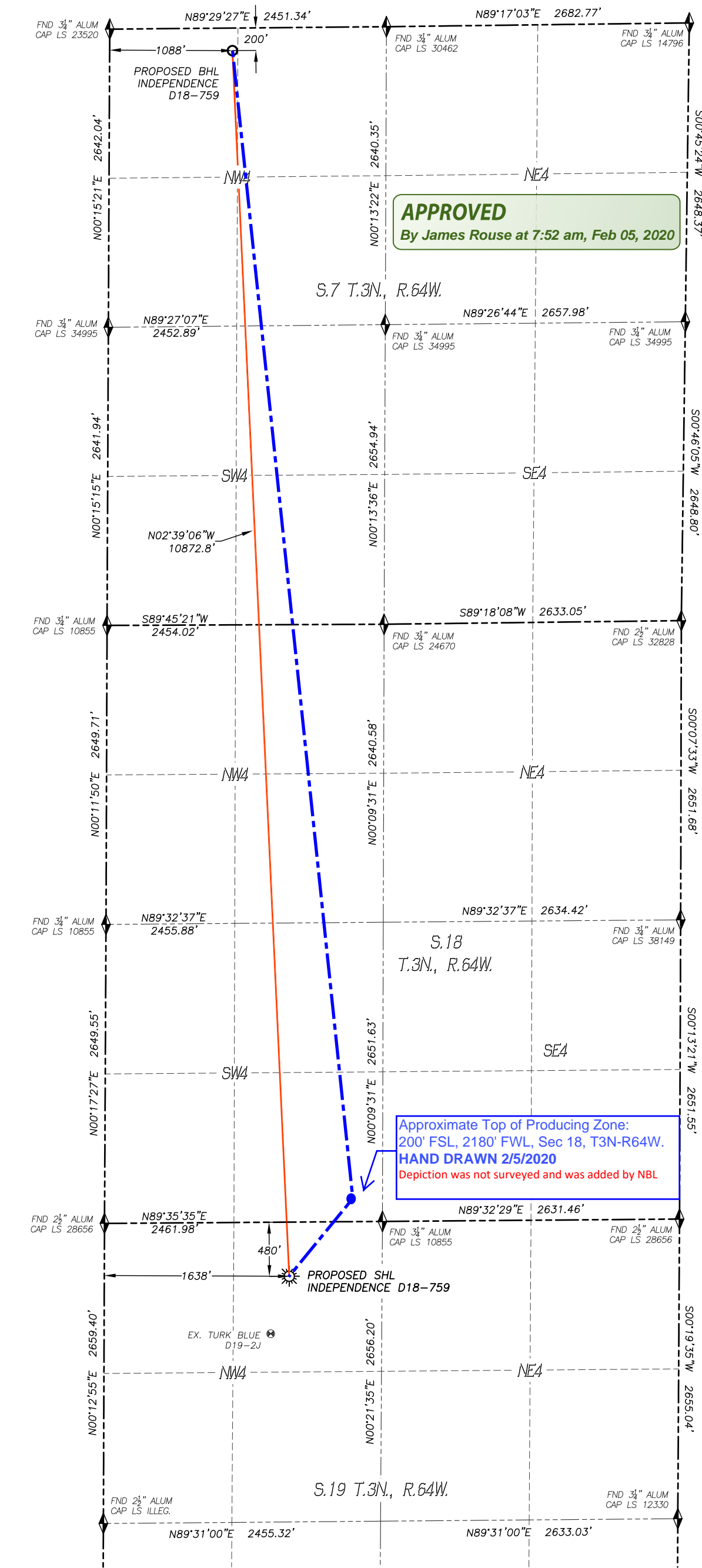
I HEREBY STATE THAT THIS WELL LOCATION CERTIFICATE WAS PREPARED BY ME OR UNDER MY DIRECT SUPERVISION, THAT THE WORK WAS COMPLETED ON 8/17/2017 FOR AND ON BEHALF OF NOBLE ENERGY, INC., AND THAT THIS MAP DOES NOT REPRESENT A BOUNDARY SURVEY, IT IS NOT A LAND SURVEY PLAT OR AN IMPROVEMENT SURVEY PLAT AND IT IS NOT TO BE RELIED UPON FOR THE ESTABLISHMENT OF FENCE, BUILDING OR OTHER FUTURE IMPROVEMENT LINES.

NOTES:

- 1) BEARINGS FOR THIS MAP ARE ASSUMED AND BASED UPON GPS OBSERVATIONS MADE BETWEEN MONUMENTS LOCATED AT THE NORTHWEST CORNER AND NORTH QUARTER CORNER OF SECTION 19, T.3N., R.64W.
- 2) HORIZONTAL DATUM IS NAD83.
- 3) VERTICAL DATUM IS NAVD88 AND ORIGINATES FROM THE LOCAL C.O.R.S. NETWORK, UTILIZING THE GEOID12A MODEL.
- 4) SEE LOCATION DRAWING FOR VISIBLE IMPROVEMENTS WITHIN 500' OF PROPOSED DISTURBED AREA.
- 5) SURFACE USE: RANGELAND.
- 6) INST. OPERATOR: KYLE DALEY.
- 7) NEAREST WELL: 535'± SW - TURK BLUE D19-2J



FOR AND ON BEHALF OF  
DALEY LAND SURVEYING, INC.,  
Robert Daley, PLS 35597



NEAREST CULTURAL ITEMS:

BUILDING: 627'± NE  
BUILDING UNIT: 674'± NE  
HIGH OCC. BLD. UNIT: 5280'+  
DES. OUTSIDE ACTIVITY AREA: 5280'+  
PUBLIC ROAD: 468'± N  
ABOVE GROUND UTILITY: 449'± N  
RAILROAD: 5280'+  
PROPERTY LINE: 480'± N

NAD 83 LATITUDE AND LONGITUDE

SURFACE LOCATION:

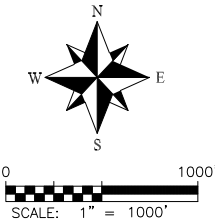
LATITUDE: N40.21666°  
LONGITUDE: W104.59681°  
ELEV: 4786'  
PDOP: 1.1  
QTR/QTR: NE4/NW4

BOTTOM HOLE:

LATITUDE: N40.24647°  
LONGITUDE: W104.59863°

LEGEND

- FOUND MONUMENT AS DESCRIBED
- PROPOSED WELL
- EXISTING WELL
- BOTTOM HOLE
- ABANDONED WELL
- CALCULATED POSITION



noble energy

DALEY LAND  
SURVEYING, INC.  
970.302.4159