



00500099

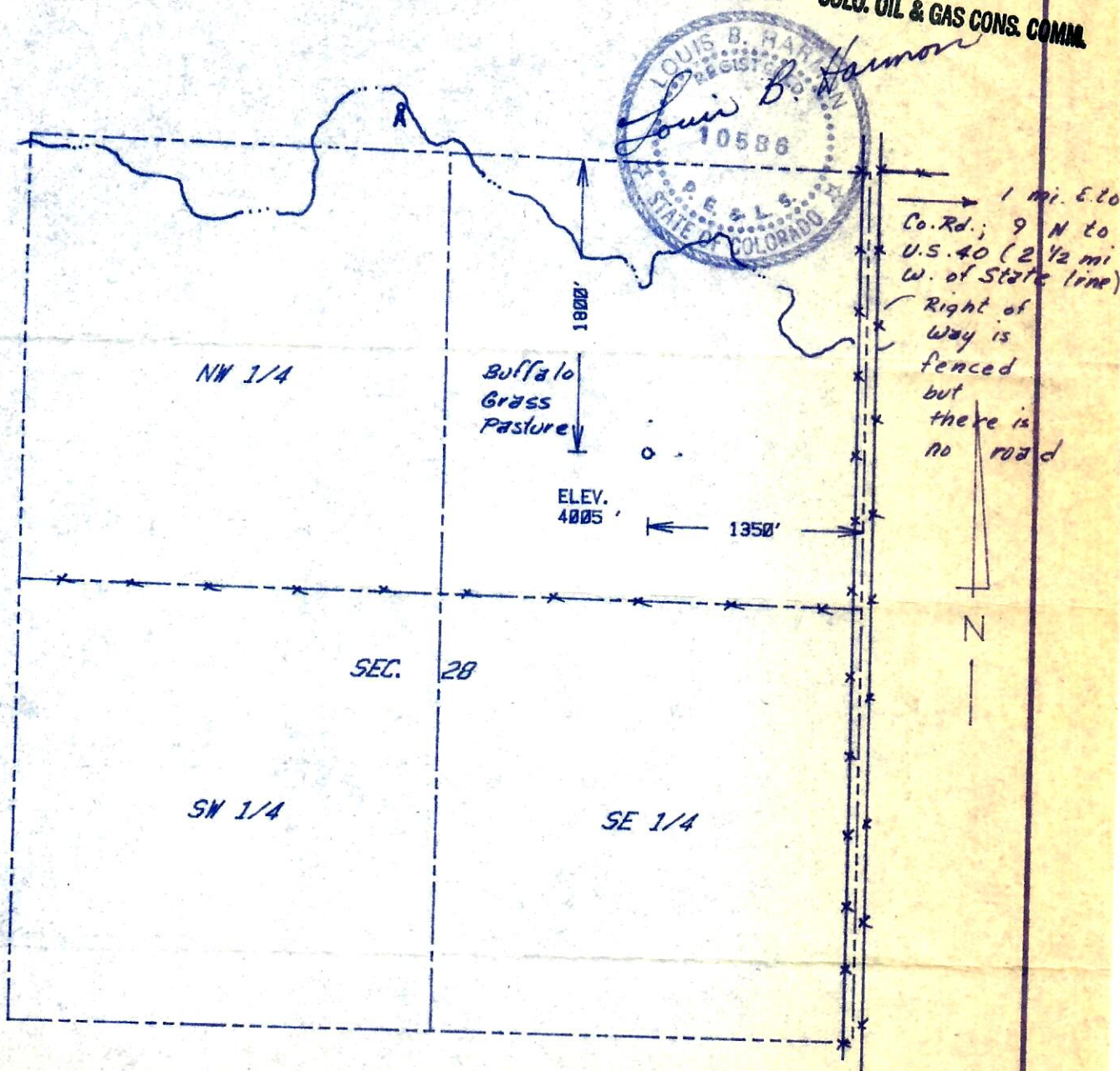
9/17/85

RECEIVED

SEP 18 1985

COLO. OIL & GAS CONS. COMM.

The accompanying plat is an accurate representation showing the location of a proposed well. This location may be described as a point 1800 feet south of the north line, and 1350 feet west of the east line of Section 28, Township 15 S Range 42 W of the 6th P.M., CHEYENNE County, COLORADO. The surface elevation at this point is 4005 feet m.s.l.



SCALE - 1"=1000'

BEST IMAGE
AVAILABLE

○ SURVEYED POINT
REFERENCE STAKE (200 'N, 200 'E)
NE 1/4 SEC. 28, T 15 S, R 42 W

Revised: 9/16/85
County Name
Corrected.

HARMON
ENGINEERING
SERVICES

#28-32 HULL

WINTERSHALL OIL AND GAS CORP.

CHEYENNE CO., COLORADO

31 AUG 85