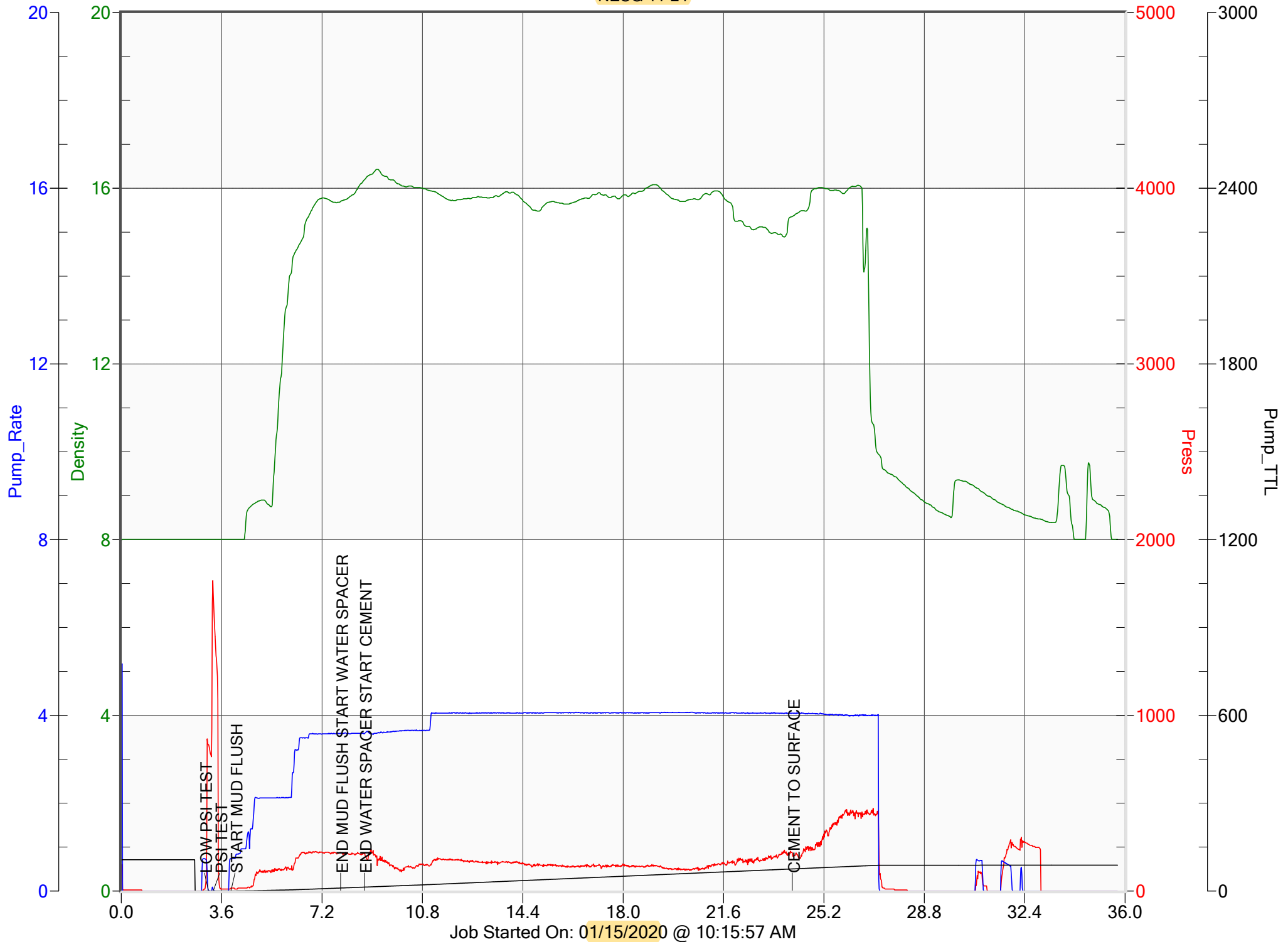


# ANADARKO

NESG 11-24





Service Order #: 75670

Date: 15-Jan-20

Well Name	Location	County	St	API#		
NESG 11-24		WELD	CO	05-123-23121		
Formation	Cement Via	Type Of Service	Well Type	Age	AFE#	PO#
	CASING	PLUG		REWORK		

Customer: ANADARKO

Remarks: CEMENT W/ENHANCERS, 1.23 YIELD,  
15.8 LBS/GAL  
283 SKS, 62 BBLS  
TOC FROM 965' TO SURFACE

Customer Rep: JOSE

PH:

WELLBORE DATA				
Type	Size	Weight	Depth	Volume
Surface Casing:	8.625	24.0	862.0	
Production Casing:	4.500	11.6	965.0	
Intermediate:				
Drill Pipe:				
Tubing:				

Type	Size	Depth (Top)	Depth (Bot)	Volume
Liner:				
Open Hole:	7.875	862.0	965.0	

OTHER DATA		
BHT	Max PSI	Total Depth
	500	

Packer or RetainerType / Depth:

Perf Depths:	#	Total
	0	0
	0	
	0	

TIME	PUMP RATES		DENSITY	PRESS	STG TOT	TOTAL	REMARKS
	WATER (gpm)	PUMP (bpm)	(lb/gal)	(psi)	(bbls)	(bbls)	
10:26	0	0.0	8.01	833	0.1	0.1	LOW PSI TEST
10:26	0	0.0	8.01	1,693	0.2	0.2	PSI TEST
10:27	0	0.7	8.01	17	0.0	0.2	START MUD FLUSH
10:31	0	3.6	15.70	216	10.0	10.2	END MUD FLUSH START WATER SPACER
10:32	0	3.6	16.19	212	2.4	13.3	END WATER SPACER START CEMENT
10:47	81	4.1	15.36	217	62.0	75.3	CEMENT TO SURFACE

## Summary

Max Fl. Rate	Avg Fl. Rate	Max Psi	Avg Psi
4.1	3.1	1,767	179

Customer Acknowledgement:

Service Rating:

- ☐ Satisfactory  
☐ Unsatisfactory

Cementer:

E ESCALANTE

PRODUCTS USED