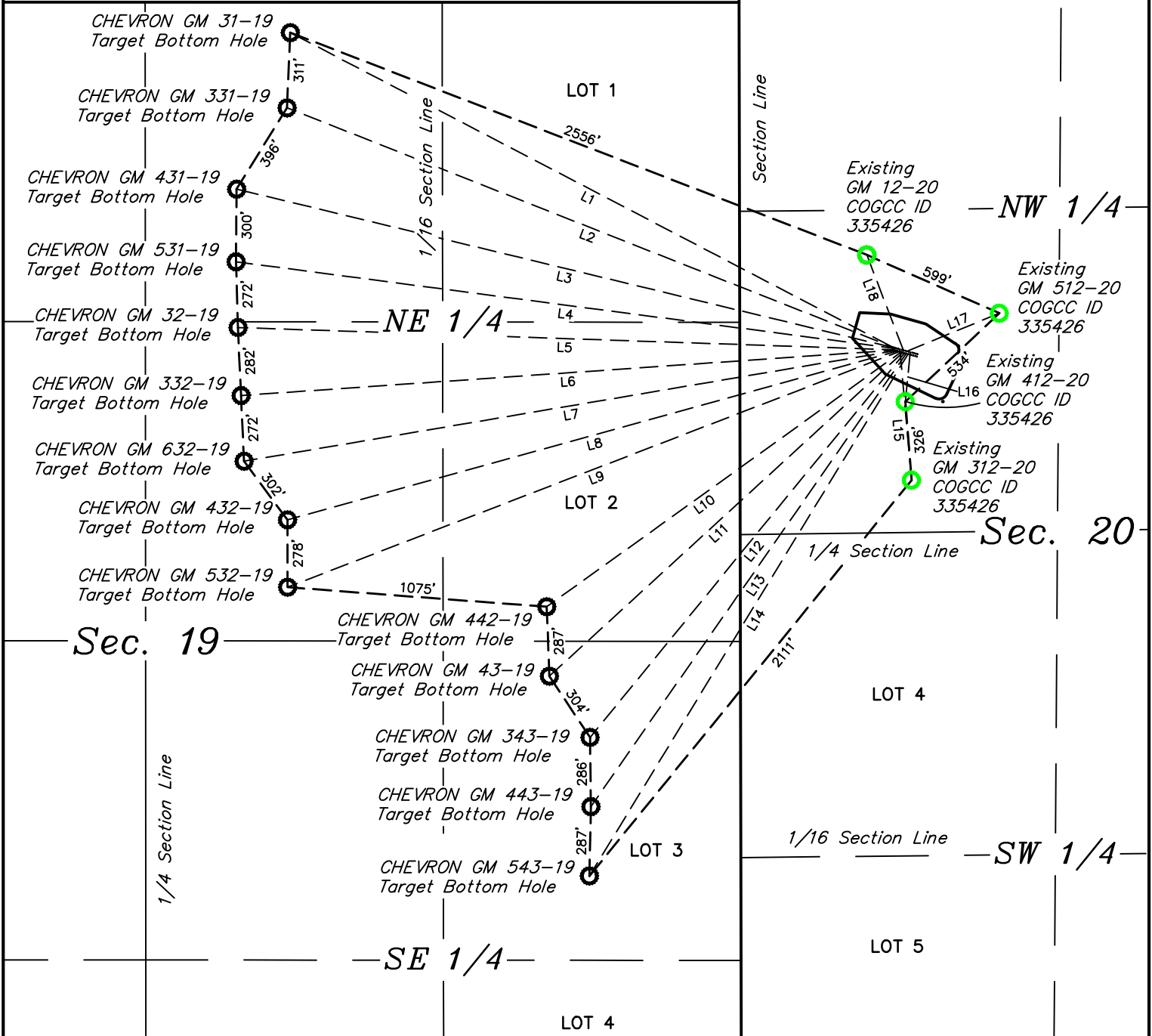


LINE TABLE			LINE TABLE			LINE TABLE		
LINE	DIRECTION	LENGTH	LINE	DIRECTION	LENGTH	LINE	DIRECTION	LENGTH
L1	N62°25'40"W	2811.94'	L7	S80°22'32"W	2733.91'	L13	S34°50'37"W	2282.63'
L2	N68°26'56"W	2702.19'	L8	S74°32'42"W	2618.02'	L14	S31°24'22"W	2528.21'
L3	N76°26'09"W	2807.39'	L9	S68°56'55"W	2711.23'	L15	S05°07'43"E	543.18'
L4	N82°30'41"W	2762.24'	L10	S54°17'56"W	1804.13'	L16	S05°40'15"W	204.85'
L5	N88°03'37"W	2708.04'	L11	S47°31'43"W	1981.05'	L17	N67°37'10"E	413.86'
L6	S86°01'42"W	2707.33'	L12	S39°17'35"W	2053.51'	L18	N20°54'44"W	422.26'



LEGEND:

- = TARGET BOTTOM HOLE.
- = EXISTING BOTTOM HOLE.

N



TEP Rocky Mountain LLC

GM 12-20 PAD
SW 1/4 NW 1/4, SECTION 20, T6S, R96W, 6th P.M.
GARFIELD COUNTY, COLORADO

SURVEYED BY	DAYTON SLAUGH, J.F.	04-04-19	SCALE
DRAWN BY	T.L.L.	12-20-19	1" = 600'
MULTI-WELL PLAN			PLAT #3



UELS, LLC
Corporate Office * 85 South 200 East
Vernal, UT 84078 * (435) 789-1017