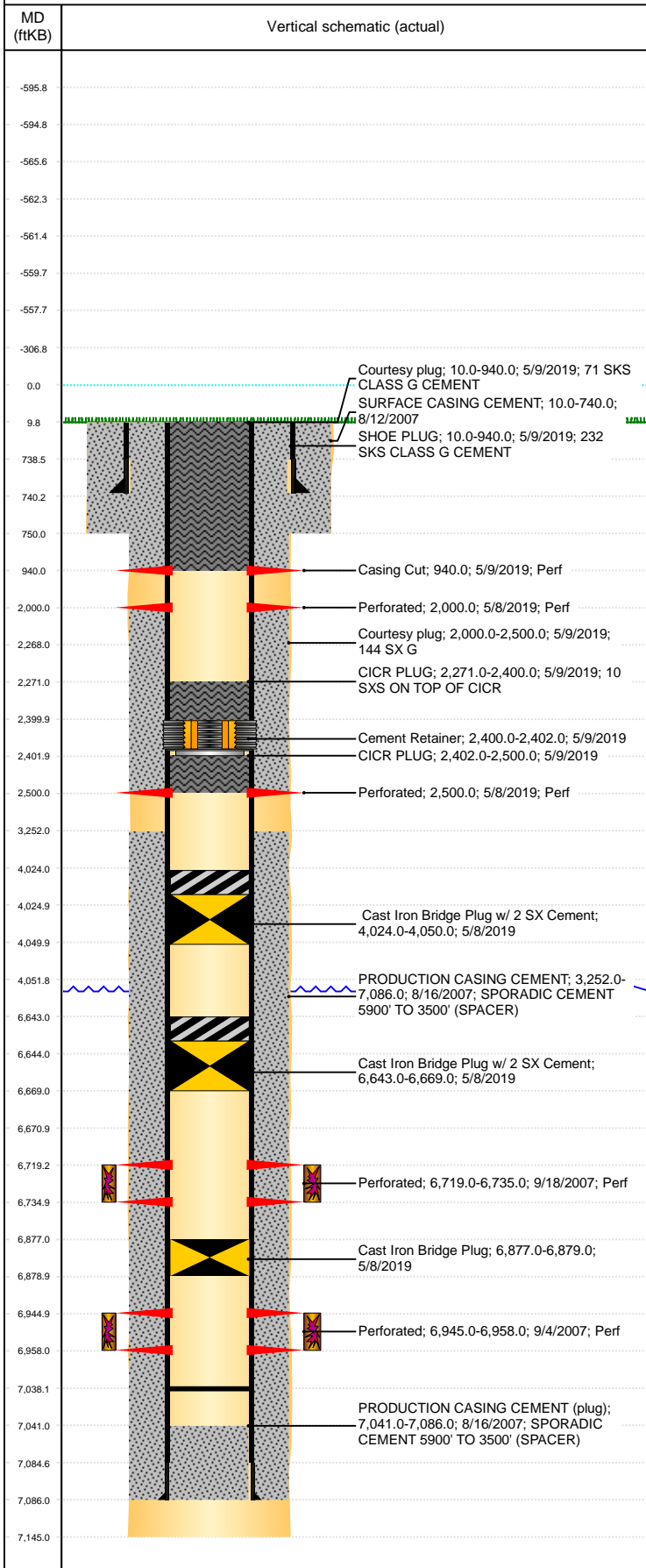


**Well Name: SPIKE STATE D14-13**

VERTICAL, ORIGINAL HOLE, 2/24/2020 3:25:17 PM



Well Header									
API 05-123-25097			Business Unit DJ BASIN			District 15		Well Config VERTICAL	
KB - GL / MSL (ft... 10.00		Spud Date 8/12/2007		P & A Date 10/2/2019		Well Production Status PA			SoRT Yes
Comment									
Surface Location (Congressional)									
Qtr 3 SW	Qtr 4 SW	Section 14	Twnshp 3	Twnsh... N	Range 64	Rng E/... W	Actual Latitude (°) 40.21969393		Actual Longitude (°) -104.52588222
Wellbore Sections									
Section Des			Size (in)			Act Top, MD (ftKB)		Act Btm, MD (ftKB)	
SURFACE			12 1/4			10		750	
PRODUCTION			7 7/8			750		7,145	
Casing Strings									
Csg Des			Run Date		OD (in)	Wt/Len (lb/ft)	Grade	Top, MD (ftKB)	MD (ftKB)
Surface			8/12/2007		8 5/8	24.00	?	10.0	740.0
Production			8/16/2007		4 1/2	11.60	M-80	10.0	7,086.0
Cement									
Des					Start Date		Top (ftKB)		Btm (ftKB)
SURFACE CASING CEMENT					8/12/2007		10.0		740.0
PRODUCTION CASING CEMENT					8/16/2007		3,252.0		7,086.0
Courtesy plug					5/9/2019		2,000.0		2,500.0
CICR PLUG					5/9/2019		2,271.0		2,400.0
CICR PLUG					5/9/2019		2,402.0		2,500.0
SHOE PLUG					5/9/2019		10.0		940.0
Courtesy plug					5/9/2019		10.0		940.0
Zone Statuses									
Zone Name		Status Date		Status	Fluid Type	Job			Prod Method
CODELL		6/9/2017		PR	Water	PLUG AND ABANDON, 5/7/2019 00:00			Flowing
CODELL		5/8/2019		P&A					
NIOBRARA		7/17/2009		PR					
NIOBRARA		5/8/2019		P&A					
Perforation Data									
Linked Zone			Bnch/Stg	Entered Shot Total	Top (ftKB)		Btm (ftKB)		Date
NIOBRARA, ORIGINAL HOLE CODELL, ORIGINAL HOLE				6	940.00		940.00		5/9/2019
				6	2,000.00		2,000.00		5/8/2019
				6	2,500.00		2,500.00		5/8/2019
				64	6,719.00		6,735.00		9/18/2007
				52	6,945.00		6,958.00		9/4/2007
Stimulation Intervals									
Zone				Start Date		Top (ftKB)		Btm (ftKB)	
NIOBRARA, ORIGINAL HOLE				9/25/2007		6,719.0		6,735.0	
CODELL, ORIGINAL HOLE				9/18/2007		6,945.0		6,958.0	
NIOBRARA, ORIGINAL HOLE				9/18/2007					
Other In Hole									
Run Date		Des				OD (in)	Top (ftKB)		Btm (ftKB)
10/18/2018		Plunger Lift				1 7/8			
5/8/2019		Cast Iron Bridge Plug				4	6,877.0		6,879.0
5/8/2019		Cast Iron Bridge Plug w/ 2 SX Cement				4	6,643.0		6,669.0
5/8/2019		Cast Iron Bridge Plug w/ 2 SX Cement				4	4,024.0		4,050.0
5/9/2019		Cement Retainer				4	2,400.0		2,402.0
Logs									
Date		Type				Top, MD (ftKB)		Btm, MD (ftKB)	
8/16/2007		COMPENSATED DENSITY				2,700.0		7,085.0	
8/16/2007		INDUCTION				740.0		7,105.0	
8/31/2007		CBL/CCL/GR				3,130.0		7,034.0	
9/5/2017		GYRO				0.0		6,850.0	
Plug Back Total Depths									
Date		Type		Com				Depth (ftKB)	
8/31/2007		FILL		DEPTH LOGGER ON CBL				7,041.0	
1/17/2008		PLUG REMNANTS		DRILL PLUG FREE AND PUCH TO 7038'				7,038.0	