

BONANZA CREEK ENERGY OPERATING CO  
PO BOX 21974  
BAKERSFIELD, California

State North Platte 41-44-26HNC

**Ensign 128**

## **Post Job Summary**

# **Cement Intermediate Casing**

Date Prepared: 11/3/2013  
Version: 1

Service Supervisor: FANTASIA, JOSEPH

Submitted by: LANSDALE, JUSTIN

**HALLIBURTON**

# HALLIBURTON

## Wellbore Geometry

---

Job Tubulars					MD		TVD	
Type	Description	Size in	ID in	Wt lbm/ft	Top ft	Bottom ft	Top ft	Bottom ft
Casing	9 5/8" Surface Casing	9.63	8.921	36.00	0.00	475.00		
Open Hole Section	8 3/4" Open Hole Section		8.750		475.00	6,836.00	0.00	6,700.00
Casing	7" Intermediate Casing	7.00	6.276	26.00	0.00	6,836.00	0.00	6,700.00

# HALLIBURTON

## Pumping Schedule

Stage / Plug #	Fluid #	Fluid Type	Fluid Name	Surface Density lbm/gal	Avg Rate bbl/min	Surface Volume	Downhole Volume
1	1	Spacer	Mud Flush	8.40	4.0	24.0 bbl	24.0 bbl
1	2	Cement Slurry	EconoCem B2	12.50	7.0	548.0 sacks	548.0 sacks
1	3	Cement Slurry	ExpandaCem B1	14.60	4.0	258.0 sacks	258.0 sacks

## Fluids Pumped

**Stage/Plug # 1    Fluid 1:**    Mud Flush  
 DUMMY MUD / FLUSH / SPACER SBC MATERIAL  
 42 gal/bbl    Mud Flush III  
 3.5 lbm/bbl    Mud Flush III

Fluid Density: 8.40 lbm/gal  
 Fluid Volume: 24.00 bbl

**Stage/Plug # 1    Fluid 2:**    EconoCem B2  
 ECONOCEM (TM) SYSTEM

Fluid Weight: 12.50 lbm/gal  
 Slurry Yield: 1.89 ft<sup>3</sup>/sack  
 Total Mixing Fluid: 10.28 Gal  
 Surface Volume: 548.0 sacks  
 Sacks: 548.0 sacks

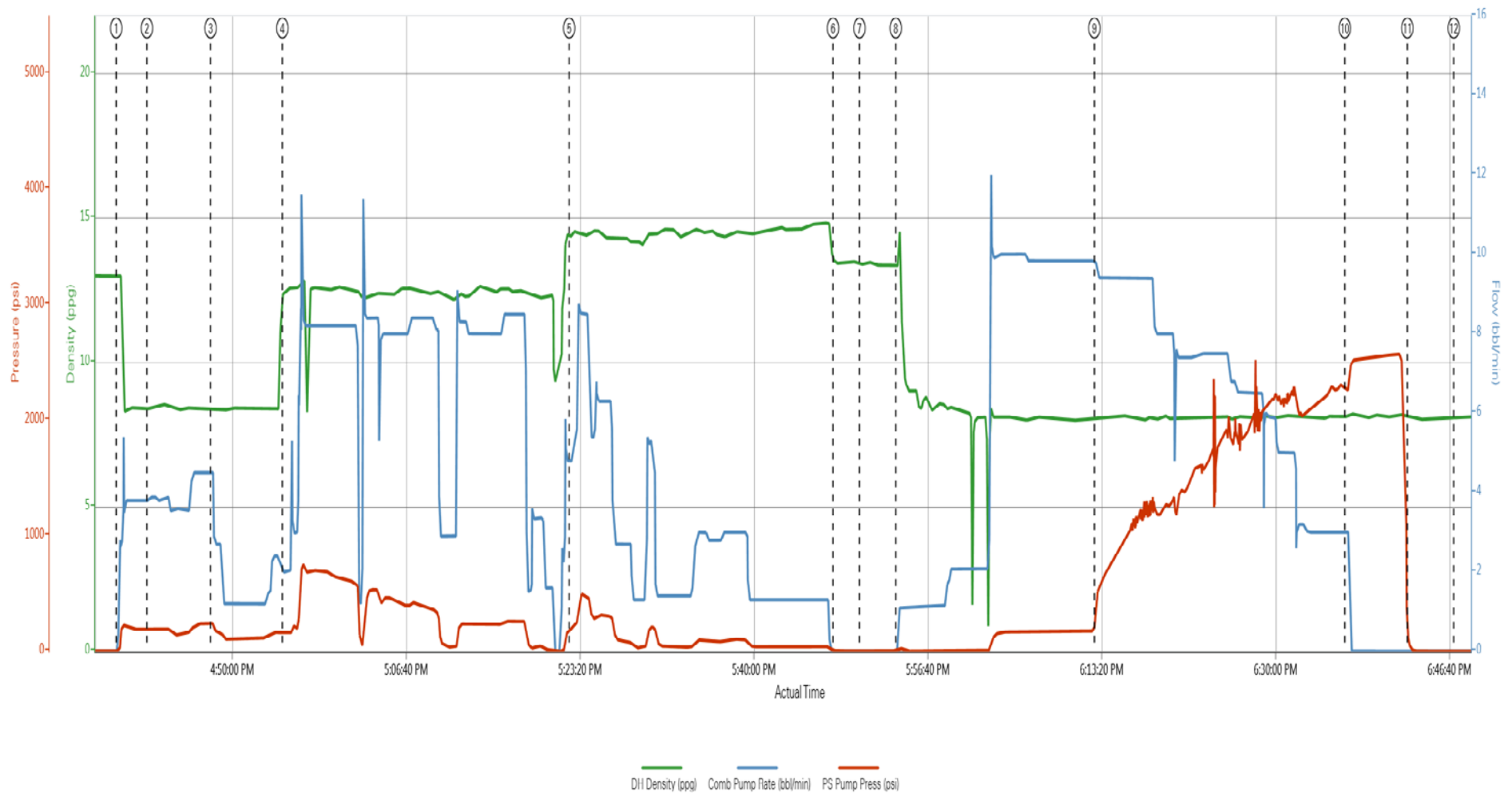
**Stage/Plug # 1    Fluid 3:**    ExpandaCem B1  
 EXPANDACEM (TM) SYSTEM

Fluid Weight: 14.60 lbm/gal  
 Slurry Yield: 1.46 ft<sup>3</sup>/sack  
 Total Mixing Fluid: 6.07 Gal  
 Surface Volume: 258.0 sacks  
 Sacks: 258.0 sacks

# HALLIBURTON

## Data Acquisition

BONANZA CREEK STATE NORTH PLATTE 41-44-26HNC



- ① Pump Spacer 1    ⑥ Shutdown    ⑪ Check Floats
- ② Pump Spacer 2    ⑦ Drop Top Plug    ⑫ End Job
- ③ Pump Spacer 2    ⑧ Pump Displacement
- ④ Pump Lead Cement    ⑨ Displ Reached Cmnt
- ⑤ Pump Tail Cement    ⑩ Pump Plug

▲ Halliburton | iCem Service®

Created: 2013-10-26 15:04:00, Version: 1.4.90

Edit

# HALLIBURTON

## Service Supervisor Reports

### Job Log

Date/Time	Chart #	Activity Code	Pump Rate	Cum Vol	Pump		Pressure (psig)		Comments
10/26/2013 13:00		Arrive at Location from Service Center							ARRIVE AT LOCATION AND PERFORM HAZARD HUNT AND SITE ASSESSMENT WITH CREW.
10/26/2013 13:15		Assessment Of Location Safety Meeting							
10/26/2013 16:00		Start Job							PERFORM PRE JOB SAFETY MEETING WITH ALL PRESENT PERSONELL.
10/26/2013 16:15		Test Lines						3902.0	PRESSURE TEST LINES TO 4000 PSI.
10/26/2013 16:38		Pump Spacer 1	4	10				190.0	PUMP 10 BBLS WATER
10/26/2013 16:41		Pump Spacer 2	4	24				251.0	PUMP 24 BBLS MUD FLUSH
10/26/2013 16:47		Pump Spacer 1	1.5	10				191.0	PUMP 10 BBLS WATER
10/26/2013 16:54		Pump Lead Cement	7	184				200.0	548 SKS ECONOCCEM MIXED AT 12.5 PPG USING RIG WATER
10/26/2013 17:22		Pump Tail Cement	4	67				190.0	258 SKS EXPANDACCEM MIXED AT 13.8 PPG USING RIG WATER
10/26/2013 17:47		Shutdown							
10/26/2013 17:50		Drop Top Plug							TOP PLUG PRELOADED
10/26/2013 17:53		Pump Displacement	8	259				174.0	GOOD RETURNS THROUGHOUT. CEMENT TO SURFACE @ 249 BBLS OUT OF 259 BBLS TOTAL DISPLACEMENT. APPROX 10 BBLS CEMENT TO SURFACE.
10/26/2013 18:36		Bump Plug	3					2263.0	PLUG LANDED AT 2263 PSI. PRESSURE BROUGHT TO 2700 PSI AND HELD 5 MIN.
10/26/2013 18:42		Check Floats							FLOATS HELD. 2 BBLS BACK.
10/26/2013 19:00		End Job							
10/26/2013 19:30		Post-Job Safety Meeting (Pre Rig-Down)							PERFORM PRE RIG DOWN SAFETY MEETING WITH CREW PRIOR TO RIGGING DOWN.

### The Road to Excellence Starts with Safety

The Road to Excellence Starts with Safety			
Sold To #: 324725	Ship To #: 3182505	Quote #:	Sales Order #: 900847834
Customer: BONANZA CREEK ENERGY OPERATING CO		Customer Rep: Bradley, Jon	
Well Name: State North Platte	Well #: 41-44-26HNC	API/UWI #: 05-123-37562	
Field: WATTENBERG	City (SAP): KERSEY	County/Parish: Weld	State: Colorado
Lat: N 40.375 deg. OR N 40 deg. 22 min. 31.224 secs.		Long: W 104.396 deg. OR W -105 deg. 36 min. 12.924 secs.	
Contractor: Ensign		Rig/Platform Name/Num: Ensign 128	
Job Purpose: Cement Intermediate Casing			
Well Type: Development Well		Job Type: Cement Intermediate Casing	
Sales Person: GREGORY, JON	Srvc Supervisor: FANTASIA, JOSEPH		MBU ID Emp #: 485445

### Job Personnel

HES Emp Name	Exp Hrs	Emp #	HES Emp Name	Exp Hrs	Emp #	HES Emp Name	Exp Hrs	Emp #
FANTASIA, JOSEPH Brandon	7.0	485445	GRIFFITHS, ZACHARY Sakae	7.0	551430	HINKLE, BRADLEY Dean	7.0	512123
ROBINSON, TROY	7.0	123456	SAUCEDA, JIMMY	7.0	123456			

### Equipment

HES Unit #	Distance-1 way	HES Unit #	Distance-1 way	HES Unit #	Distance-1 way	HES Unit #	Distance-1 way
10248053C	50 mile	10822531C	50 mile	11362287C	50 mile	11633848	50 mile
11748359	50 mile	NA	50 mile				

### Job

Formation Name	Formation Depth (MD)	Top	Bottom	Form Type	Job depth MD	Water Depth	Perforation Depth (MD)	From	To
				BHST	6836. ft				
					Job Depth TVD	Wk Ht Above Floor			
					6700. ft				

### Job Times

Date	Time	Time Zone
26 - Oct - 2013	09:00	MST
26 - Oct - 2013	13:00	MST
26 - Oct - 2013	16:00	MST
26 - Oct - 2013	19:00	MST
26 - Oct - 2013	20:00	MST

### Well Data

Description	New / Used	Max pressure psig	Size in	ID in	Weight lbm/ft	Thread	Grade	Top MD ft	Bottom MD ft	Top TVD ft	Bottom TVD ft
8 3/4" Open Hole Section				8.75				475.	6836.	.	6700.
7" Intermediate Casing	Unknown		7.	6.276	26.		P-110	.	6836.	.	6700.
9 5/8" Surface Casing	Unknown		9.625	8.921	36.		J-55	.	475.		

### Sales/Rental/3<sup>rd</sup> Party (HES)

Description	Qty	Qty uom	Depth	Supplier
CMT CASING EQUIPMENT BOM	1	JOB		
Description	Qty	Qty uom	Depth	Supplier
MILEAGE FOR CEMENTING CREW,ZI	100	MI		
ZI FUEL SURCHG-CARS/PICKUPS<1 1/2TON	100	MI		
SHOE,FLT,7 8RD,2-3/4 SS II VLV	1	EA		
CLR,FLT,7 LG 8RD 23-29PPF,P/Q,2-3/4	1	EA		
PLUG,CMTG,TOP,7,HWE,5.66 MIN/6.54 MAX CS	1	EA		

Summit

Sunday, November 03, 2013 13:06:00

Version:

KIT,HALL WELD-A					1	EA			
Fluid Data									
Stage/Plug #: 1									
Fluid #	Stage Type	Fluid Name	Qty	Qty uom	Mixing Density lbm/gal	Yield ft <sup>3</sup> /sk	Mix Fluid Gal/sk	Rate bbl/min	Total Mix Fluid Gal/sk
1	Mud Flush		24.00	bbl	8.4			4	
	42 gal/bbl	MUD FLUSH III - SBM (528788)							
	3.5 lbm/bbl	MUD FLUSH III, 40 LB SACK (101633304)							
2	EconoCem B2	ECONOCEM (TM) SYSTEM (452992)	548.0	sacks	12.5	1.89	10.28	7	10.28
	10.28 Gal	FRESH WATER							
3	Expandacem B1	EXPANDACEM (TM) SYSTEM (452979)	258.0	sacks	14.6	1.46	6.07	4	6.07
	6.07 Gal	FRESH WATER							
The Information Stated Herein Is Correct					Customer Representative Signature				

