

T6S, R96W, 6th P.M.

TEP Rocky Mountain LLC

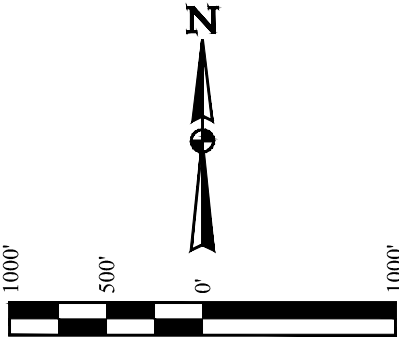
CHEVRON GM 31-19
SW 1/4 NW 1/4, SECTION 20, T6S, R96W, 6th P.M.
GARFIELD COUNTY, COLORADO

BASIS OF BEARINGS

BEARINGS ARE BASED ON THE ASSUMPTION
THAT THE SOUTH LINE OF THE SW 1/4 OF SECTION 20
BEARS S89°33'27"W. MONUMENTS DESCRIBED HEREON.

BASIS OF ELEVATION

BENCH MARK (H79) LOCATED IN THE NE 1/4 OF SECTION 35, T4S,
R98W, 6th P.M., TAKEN FROM THE BULL FORK QUADRANGLE,
COLORADO, 7.5 MINUTE SERIES. (TOPOGRAPHIC MAP) PUBLISHED
BY THE UNITED STATES DEPARTMENT OF THE INTERIOR,
GEOLOGICAL SURVEY. SAID ELEVATION IS MARKED AS BEING
8535 FEET.



NOTE:
See Location Drawing Plat 6
for visible improvements
within 500' of this location.

CERTIFICATE
THIS IS TO CERTIFY THAT THE ABOVE PLAT WAS PREPARED FROM FIELD
NOTES OF ACTUAL SURVEYS MADE BY ME OR UNDER MY SUPERVISION
AND THAT THE SAME ARE TRUE AND CORRECT TO THE BEST OF MY
KNOWLEDGE AND BELIEF.

PLAT #1

REGISTERED LAND SURVEYOR
REGISTRATION NO. 38130
STATE OF COLORADO 01-07-20

REV: 1 01-07-20 T.L.L. (ADD PLAT NUMBER & NOTE)



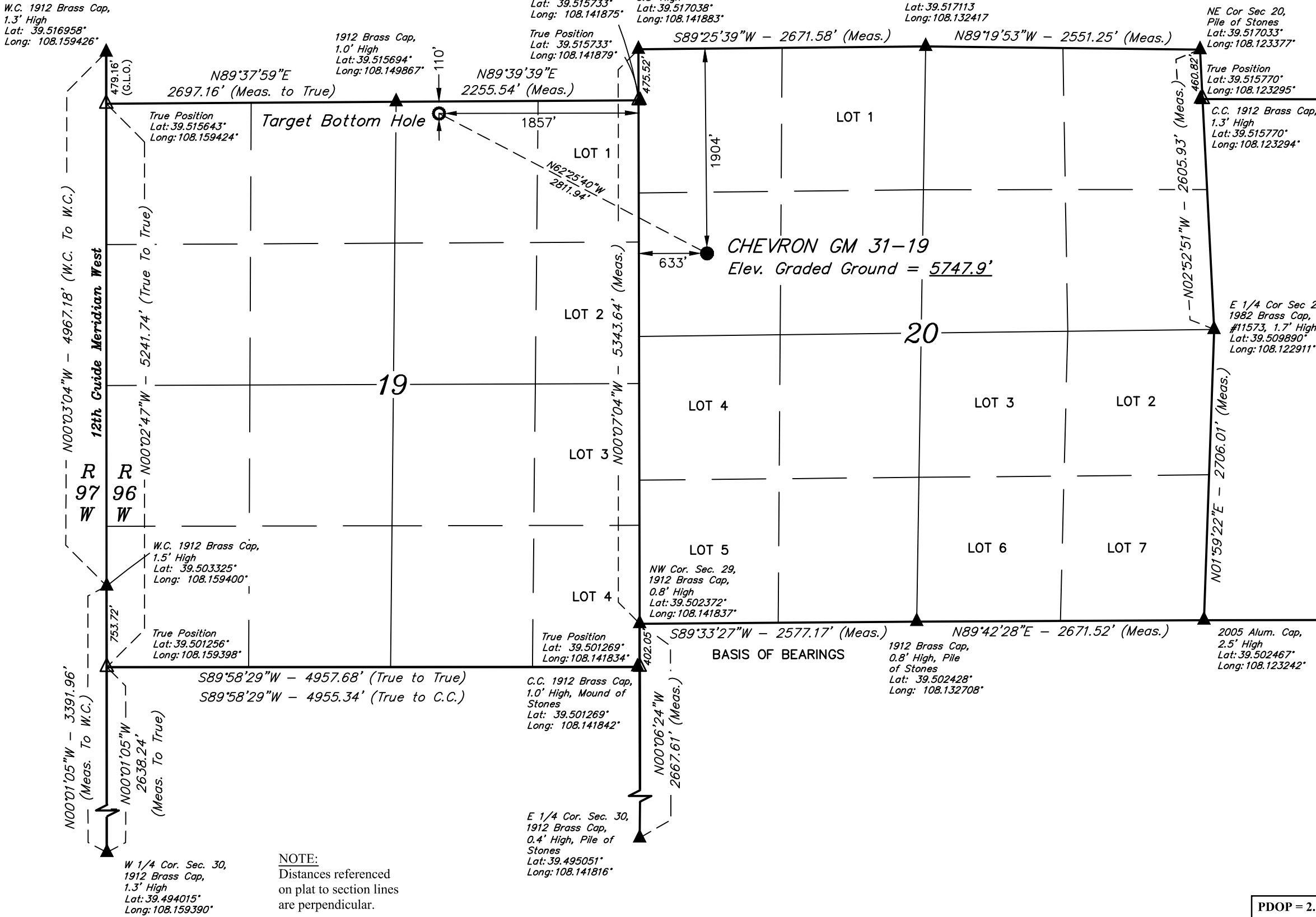
UELS, LLC
Corporate Office * 85 South 200 East
Vernal, UT 84078 * (435) 789-1017

| | | | |
|-------------|---------------------|----------|------------|
| SURVEYED BY | DAYTON SLAUGH, J.F. | 04-04-19 | SCALE |
| DRAWN BY | T.L.L. | 12-20-19 | 1" = 1000' |

WELL LOCATION PLAT

PDOP = 2.1

| NAD 83 (SURFACE LOCATION) | NAD 83 (TARGET BOTTOM HOLE) |
|--|--|
| LATITUDE = 39°30'42.59" (39.511830) | LATITUDE = 39°30'55.44" (39.515399) |
| LONGITUDE = 108°08'22.64" (108.139623) | LONGITUDE = 108°08'54.45" (108.148457) |
| STATE PLANE NAD 83 (CO. CEN.) | STATE PLANE NAD 83 (CO. CEN.) |
| N: 1622131.36 E: 2255369.42 | N: 1623503.50 E: 2252916.00 |



LEGEND:

- = PROPOSED WELLHEAD.
- = TARGET BOTTOM HOLE.
- ▲ = SECTION CORNERS LOCATED. (NAD 83)
- △ = SECTION CORNERS RE-ESTABLISHED. (Not Set on Ground.) (NAD 83)