

T6S, R96W, 6th P.M.

TEP Rocky Mountain LLC

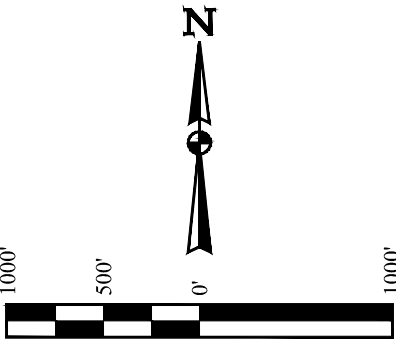
CHEVRON GM 632-19  
SW 1/4 NW 1/4, SECTION 20, T6S, R96W, 6th P.M.  
GARFIELD COUNTY, COLORADO

BASIS OF BEARINGS

BEARINGS ARE BASED ON THE ASSUMPTION  
THAT THE SOUTH LINE OF THE SW 1/4 OF SECTION 20  
BEARS S89°33'27"W. MONUMENTS DESCRIBED HEREON.

BASIS OF ELEVATION

BENCH MARK (H79) LOCATED IN THE NE 1/4 OF SECTION 35, T4S,  
R98W, 6th P.M., TAKEN FROM THE BULL FORK QUADRANGLE,  
COLORADO, 7.5 MINUTE SERIES. (TOPOGRAPHIC MAP) PUBLISHED  
BY THE UNITED STATES DEPARTMENT OF THE INTERIOR,  
GEOLOGICAL SURVEY. SAID ELEVATION IS MARKED AS BEING  
8535 FEET.



NOTE:  
See Location Drawing Plat 6  
for visible improvements  
within 500' of this location.

CERTIFICATE

THIS IS TO CERTIFY THAT THE ABOVE PLAT WAS PREPARED FROM FIELD  
NOTES OF ACTUAL SURVEYS MADE BY ME OR UNDER MY SUPERVISION  
AND THAT THE SAME ARE TRUE AND CORRECT TO THE BEST OF MY  
KNOWLEDGE AND BELIEF.

PLAT #1

REGISTERED LAND SURVEYOR  
REGISTRATION NO. 19160  
STATE OF COLORADO 01-09-20

REV: 1 01-07-20 T.L.L. (ADD PLAT NUMBER & NOTE)



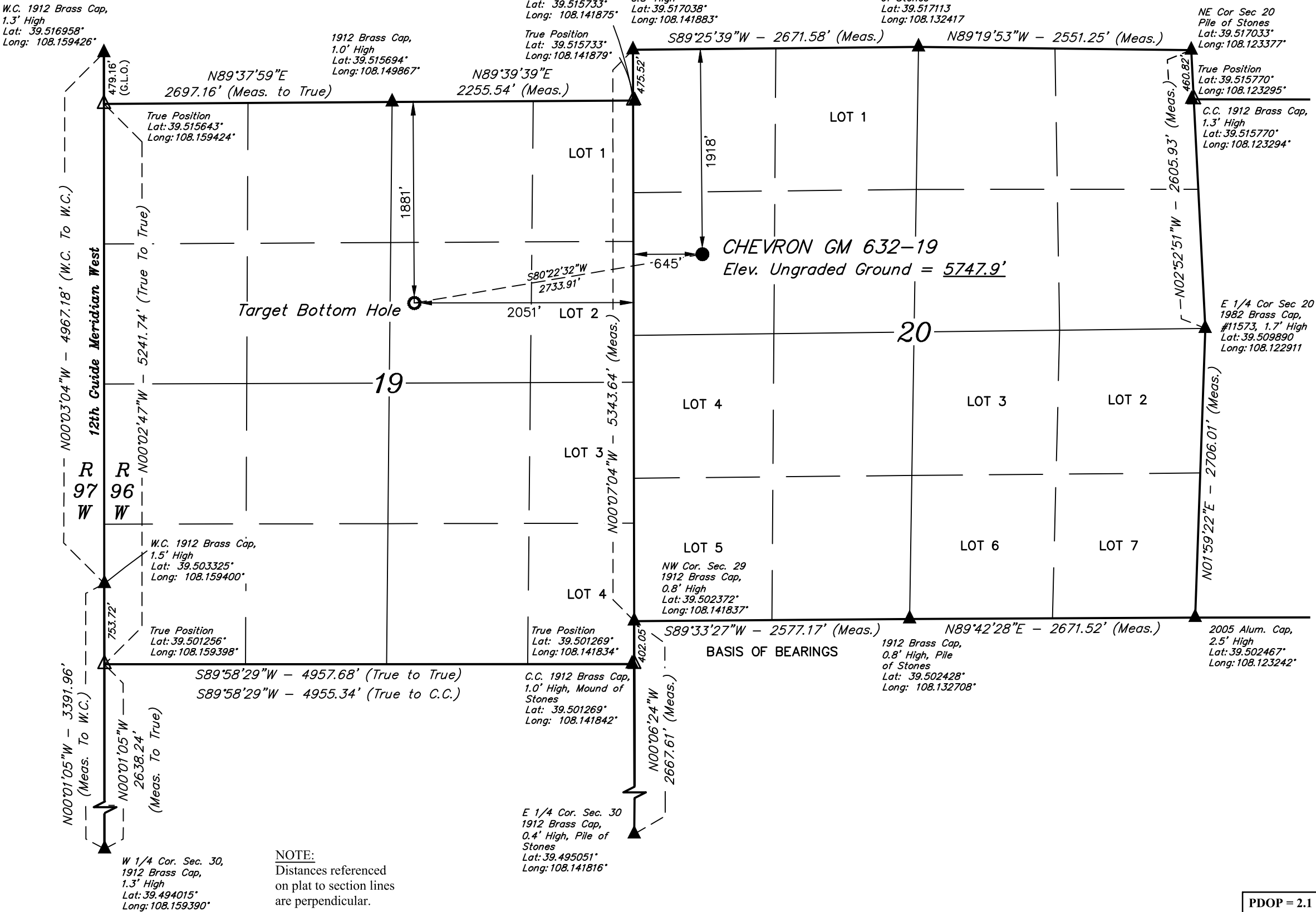
UELS, LLC  
Corporate Office \* 85 South 200 East  
Vernal, UT 84078 \* (435) 789-1017

SURVEYED BY	DAYTON SLAUGH, J.F.	04-04-19	SCALE
DRAWN BY	T.L.L.	12-20-19	1" = 1000'

WELL LOCATION PLAT

PDOP = 2.1

NAD 83 (SURFACE LOCATION)	NAD 83 (TARGET BOTTOM HOLE)
LATITUDE = 39°30'42.45" (39.511792)	LATITUDE = 39°30'37.92" (39.510535)
LONGITUDE = 108°08'22.49" (108.139582)	LONGITUDE = 108°08'56.87" (108.149132)
STATE PLANE NAD 83 (CO. CEN.)	STATE PLANE NAD 83 (CO. CEN.)
N: 1622117.30 E: 2255380.69	N: 1621737.90 E: 2252674.10



NOTE:  
Distances referenced  
on plat to section lines  
are perpendicular.

LEGEND:

- = PROPOSED WELLHEAD.
- = TARGET BOTTOM HOLE.
- ▲ = SECTION CORNERS LOCATED. (NAD 83)
- △ = SECTION CORNERS RE-ESTABLISHED. (Not Set on Ground.) (NAD 83)