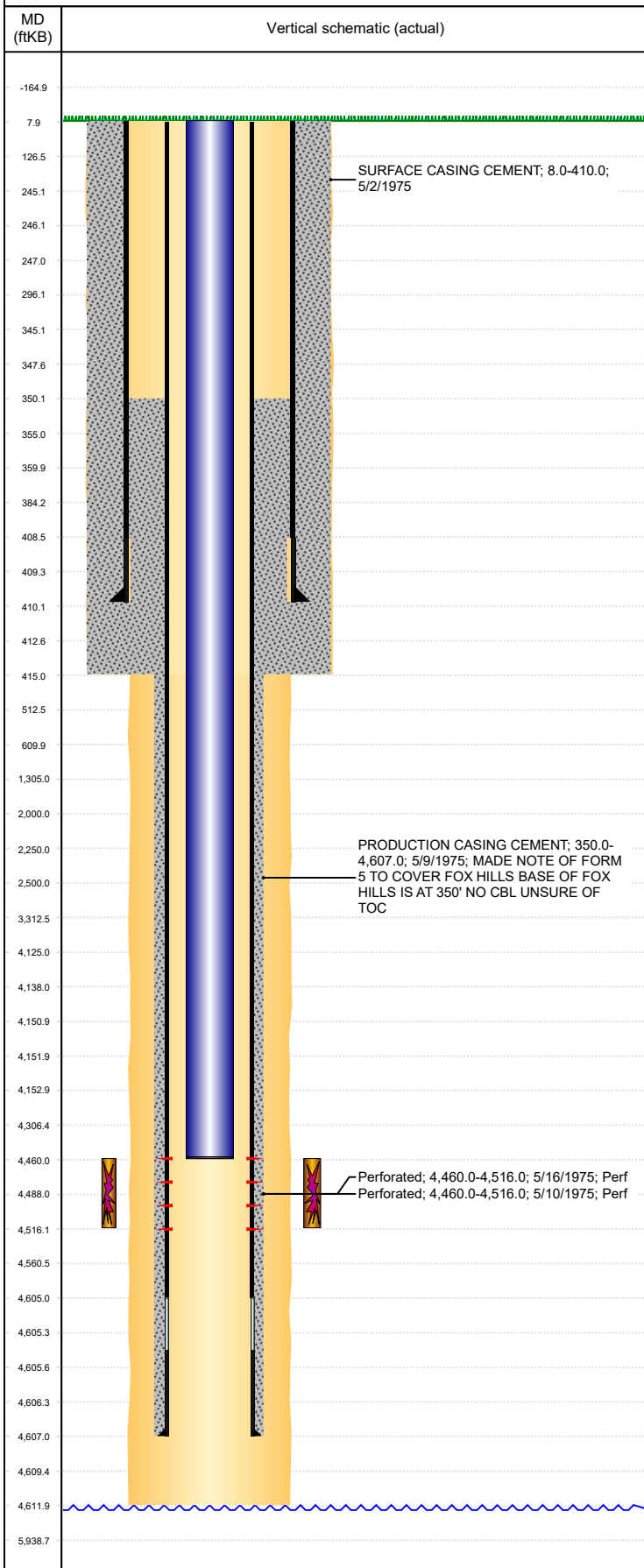


Well Name: SCHMIDT CJ UNIT 1

VERTICAL, ORIGINAL HOLE, 2/24/2020 10:09:50 AM



Well Header									
API 05-123-08397		Business Unit DJ BASIN			District 15		Well Config VERTICAL		
KB - GL / MSL (ft... 8.00		Spud Date 5/2/1975		P & A Date		Well Production Status PR			SoRT No
Comment THERE WAS A FORM 42 IN THE STATE WEBSITE SAYING FLOWLINES ABANDONED PER RULE 1103 DATE COMPLETED 6/26/2017 UNSURE OF TOC NO CBL									
Surface Location (Congressional)									
Qtr 3 SW	Qtr 4 SE	Section 19	Twshp 4	Twsh... N	Range 65	Rng E/... W	Actual Latitude (°) 40.29249200	Actual Longitude (°) -104.70428300	
Wellbore Sections									
Section Des		Size (in)			Act Top, MD (ftKB)		Act Btm, MD (ftKB)		
SURFACE		12 1/4			8		415		
PRODUCTION		7 7/8			415		4,612		
Casing Strings									
Csg Des		Run Date		OD (in)	Wt/Len (lb/ft)	Grade	Top, MD (ftKB)	MD (ftKB)	
Surface		5/2/1975		8 5/8	24.00		8.0	410.0	
Production		5/9/1975		4 1/2	10.50		8.0	4,607.0	
Cement									
Des				Start Date		Top (ftKB)		Btm (ftKB)	
SURFACE CASING CEMENT				5/2/1975		8.0		410.0	
PRODUCTION CASING CEMENT				5/9/1975		350.0		4,607.0	
Zone Statuses									
Zone Name	Status Date	Status	Fluid Type	Job				Prod Method	
SUSSEX	5/28/1975	PR	Oil					Flowing	
SUSSEX	1/6/2014	PR	Water					Flowing	
Perforation Data									
Linked Zone		Bnch/Stg	Entered Shot Total	Top (ftKB)		Btm (ftKB)		Date	
SUSSEX, ORIGINAL HOLE			56	4,460.00		4,516.00		5/10/1975	
SUSSEX, ORIGINAL HOLE			56	4,460.00		4,516.00		5/16/1975	
Stimulation Intervals									
Zone			Start Date			Top (ftKB)		Btm (ftKB)	
SUSSEX, ORIGINAL HOLE			5/22/1975			4,460.0		4,516.0	
Other In Hole									
Run Date		Des				OD (in)	Top (ftKB)	Btm (ftKB)	
Logs									
Date		Type				Top, MD (ftKB)		Btm, MD (ftKB)	
5/9/1975		COMPENSATED DENSITY				3,650.0		4,611.0	
5/9/1975		INDUCTION				408.0		4,611.0	
Plug Back Total Depths									
Date		Type		Com				Depth (ftKB)	
5/9/1975		FLOAT COLLAR		TOP OF FLOAT COLLAR				4,566.0	
5/9/1975		FILL		NO CBL USED DEPTH DRILLER FROM DENSITY LOG AND IN...				4,612.0	