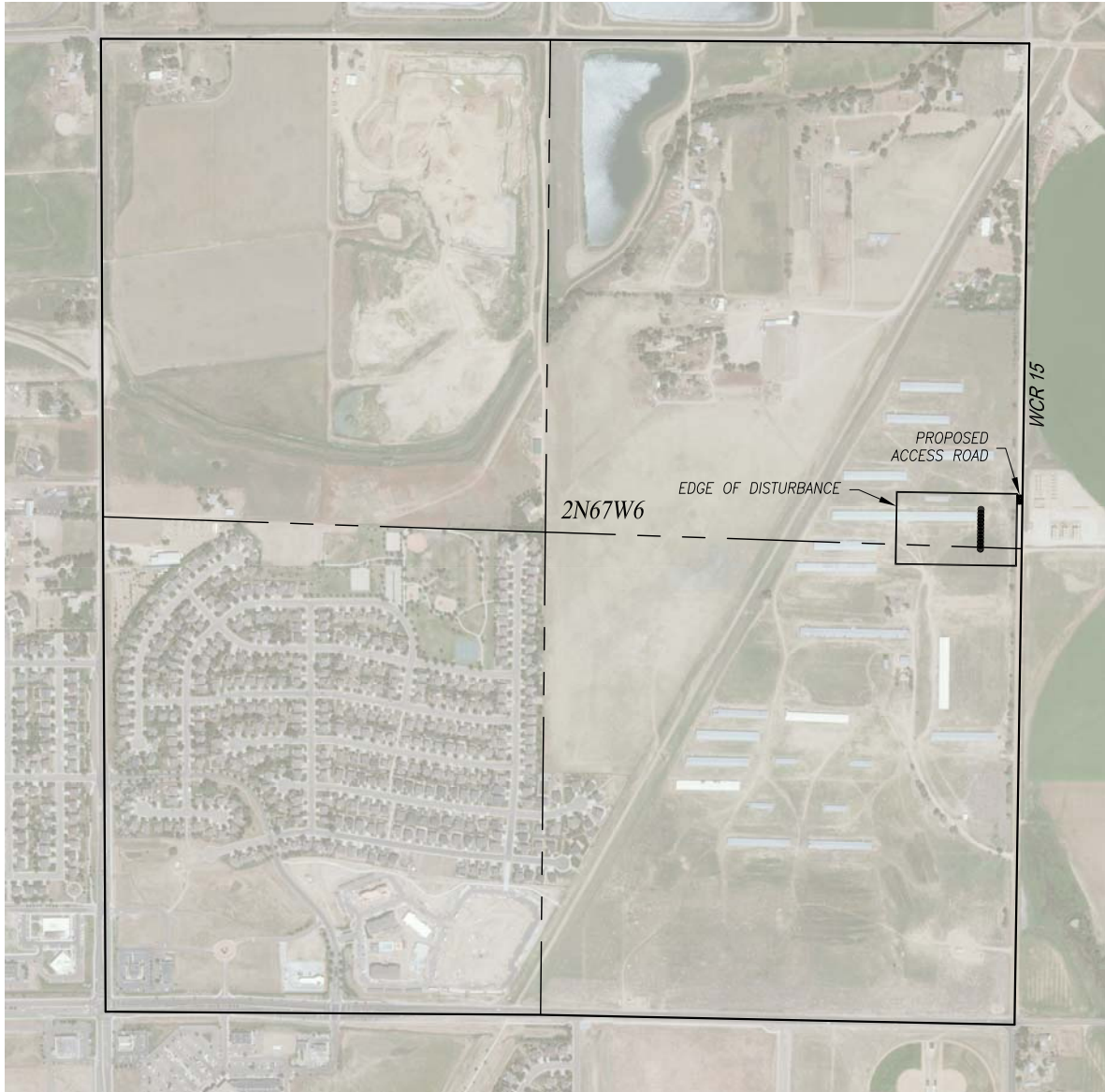


ROAD ACCESS MAP: MATHIS 6HZ PAD

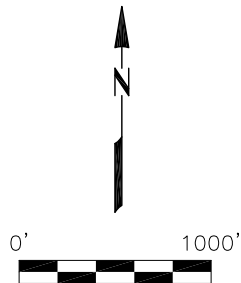
SECTION 6, TOWNSHIP 2 NORTH, RANGE 67 WEST, 6TH P.M. WELD COUNTY, COLORADO



LEGEND:

● = PROPOSED WELL

PREPARED FOR:



Acklam, Inc.		ROAD ACCESS MAP	
DATE SURVEYED: 02/19/2019		MATHIS 6HZ PAD	
DATE DRAFTED: 02/21/2019		SURFACE LOCATION:	
DRAFTED BY: SMF		SE1/4 NE1/4 & NE1/4 SE1/4	
CHECKED BY: LS		SECTION 6, TOWNSHIP 2 NORTH, RANGE 67 WEST, 6TH P.M.	
JOB No. 189050		WELD COUNTY, COLORADO	
REVISED: 05/23/19			