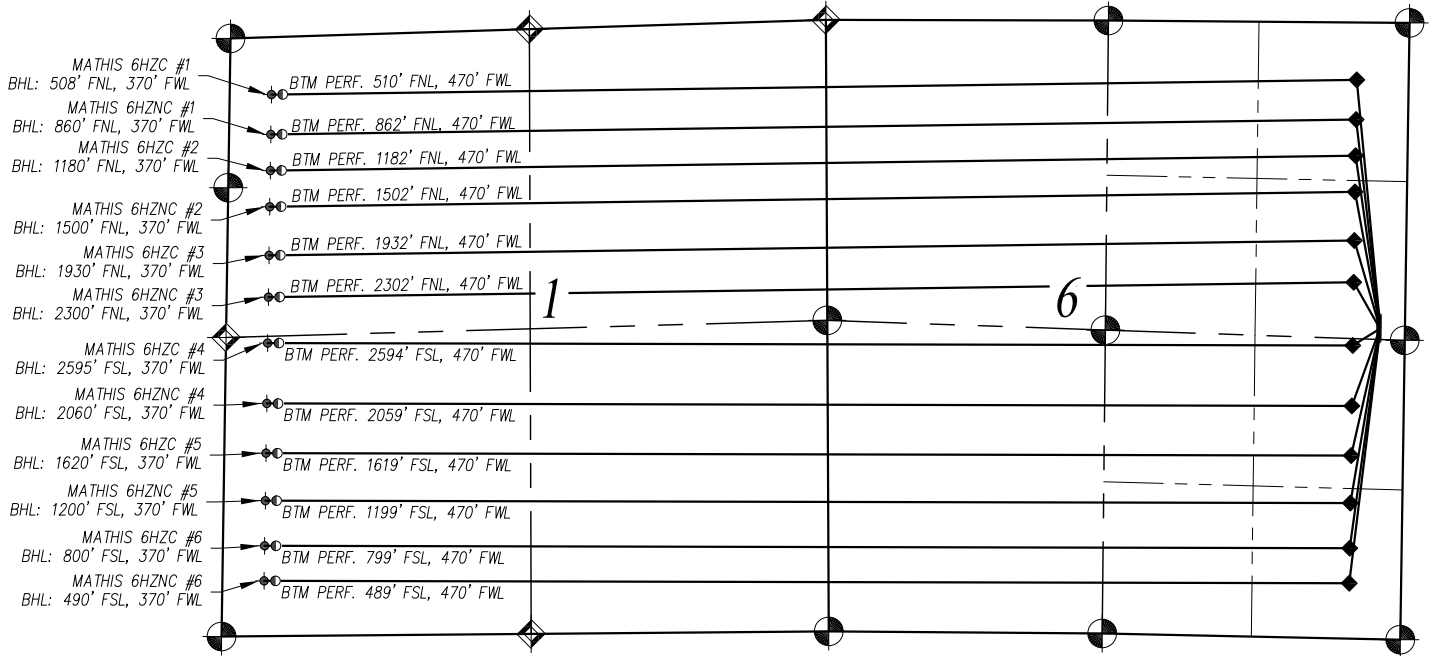


MULTI WELL PLAN: MATHIS 6HZ PAD

SECTION 6, TOWNSHIP 2 NORTH, RANGE 67 WEST, 6TH P.M. WELD COUNTY, COLORADO



MATHIS 6HZC #1
SURFACE: 2595' FNL, 230' FEL
BHL (SEC. 1): 508' FNL, 370' FWL
BTM PERF. (SEC. 1): 510' FNL, 470' FWL

MATHIS 6HZNC #1
SURFACE: 2615' FNL, 230' FEL
BHL (SEC. 1): 860' FNL, 370' FWL
BTM PERF. (SEC. 1): 862' FNL, 470' FWL

MATHIS 6HZC #2
SURFACE: 2635' FNL, 230' FEL
BHL (SEC. 1): 1180' FNL, 370' FWL
BTM PERF. (SEC. 1): 1182' FNL, 470' FWL

MATHIS 6HZNC #2
SURFACE: 2655' FNL, 230' FEL
BHL (SEC. 1): 1500' FNL, 370' FWL
BTM PERF. (SEC. 1): 1502' FNL, 470' FWL

MATHIS 6HZC #3
SURFACE: 2675' FNL, 230' FEL
BHL (SEC. 1): 1930' FNL, 370' FWL
BTM PERF. (SEC. 1): 1932' FNL, 470' FWL

MATHIS 6HZNC #3
SURFACE: 2695' FNL, 230' FEL
BHL (SEC. 1): 2300' FNL, 370' FWL
BTM PERF. (SEC. 1): 2302' FNL, 470' FWL

MATHIS 6HZC #4
SURFACE: 2715' FNL, 230' FEL
BHL (SEC. 1): 2595' FNL, 370' FWL
BTM PERF. (SEC. 1): 2594' FNL, 470' FWL

MATHIS 6HZNC #4
SURFACE: 2735' FNL, 230' FEL
BHL (SEC. 1): 2060' FNL, 370' FWL
BTM PERF. (SEC. 1): 2059' FNL, 470' FWL

MATHIS 6HZC #5
SURFACE: 2755' FNL, 230' FEL
BHL (SEC. 1): 1620' FNL, 370' FWL
BTM PERF. (SEC. 1): 1619' FNL, 470' FWL

MATHIS 6HZNC #5
SURFACE: 2775' FNL, 230' FEL
BHL (SEC. 1): 1200' FNL, 370' FWL
BTM PERF. (SEC. 1): 1199' FNL, 470' FWL

MATHIS 6HZC #6
SURFACE: 2795' FNL, 230' FEL
BHL (SEC. 1): 800' FNL, 370' FWL
BTM PERF. (SEC. 1): 799' FNL, 470' FWL

MATHIS 6HZNC #6
SURFACE: 2643' FNL, 230' FEL
BHL (SEC. 1): 490' FNL, 370' FWL
BTM PERF. (SEC. 1): 489' FNL, 470' FWL

LEGEND:

- = FOUND SECTION CORNER
- = CALCULATED SECTION CORNER
- = PROPOSED WELL
- = PROPOSED BOTTOM HOLE
- = PROPOSED HEEL LOCATION
- = BTM PERF.
- BHL = BOTTOM HOLE LOCATION

NOT TO SCALE

PREPARED FOR:



Acklam, Inc.

MULTI WELL PLAN

MATHIS 6HZ PAD

DATE SURVEYED: 02/19/2019

DATE DRAFTED: 02/20/2019

DRAFTED BY: SMF CHECKED BY: LS

JOB No. 189050 REVISED: 03/15/19

SURFACE LOCATION:
SE1/4 NE1/4 & NE1/4 SE1/4
SECTION 6, TOWNSHIP 2 NORTH, RANGE 67 WEST, 6TH P.M.
WELD COUNTY, COLORADO