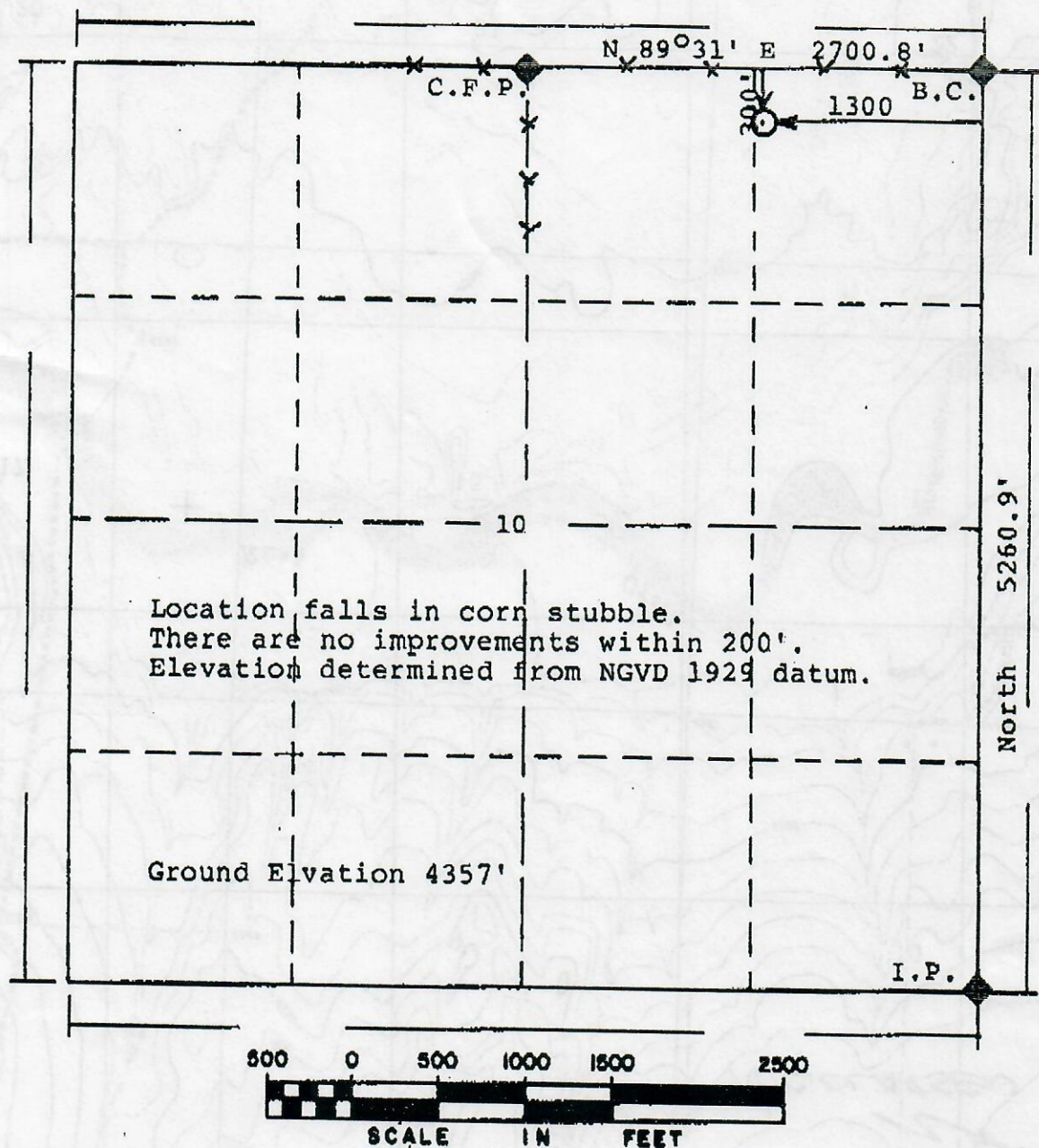


00523947

ALL POWERS ELEVATION CO., INC.
elevations originate from
accepted U.S. Benchmarks

R. 49 W

BASIS of BEARING: The eastline of Sec. 10 runs north-s-



RECEIVED

DEC 1 1961

COLO. OIL & GAS CONS. COMM.

Powers Elevation Co., Inc. of Denver, Colorado has in accordance with a request from Pat Ungleich for Mull Drilling Co., Inc. determined the location of Nicolarsen 1 to be 300'fml, 1300'fel Section 10, Township 16 S Range 49 West of the Principal Meridian, Cheyenne County, Colorado

I hereby certify that this plat is an accurate representation of a correct survey showing the location of Nicolarsen 1

Date: Dec. 30, 1992

Licensed Land Surveyor No. 24670
State of Colorado

BEST IMAGE
AVAILABLE

BEST IMAGE
AVAILABLE

