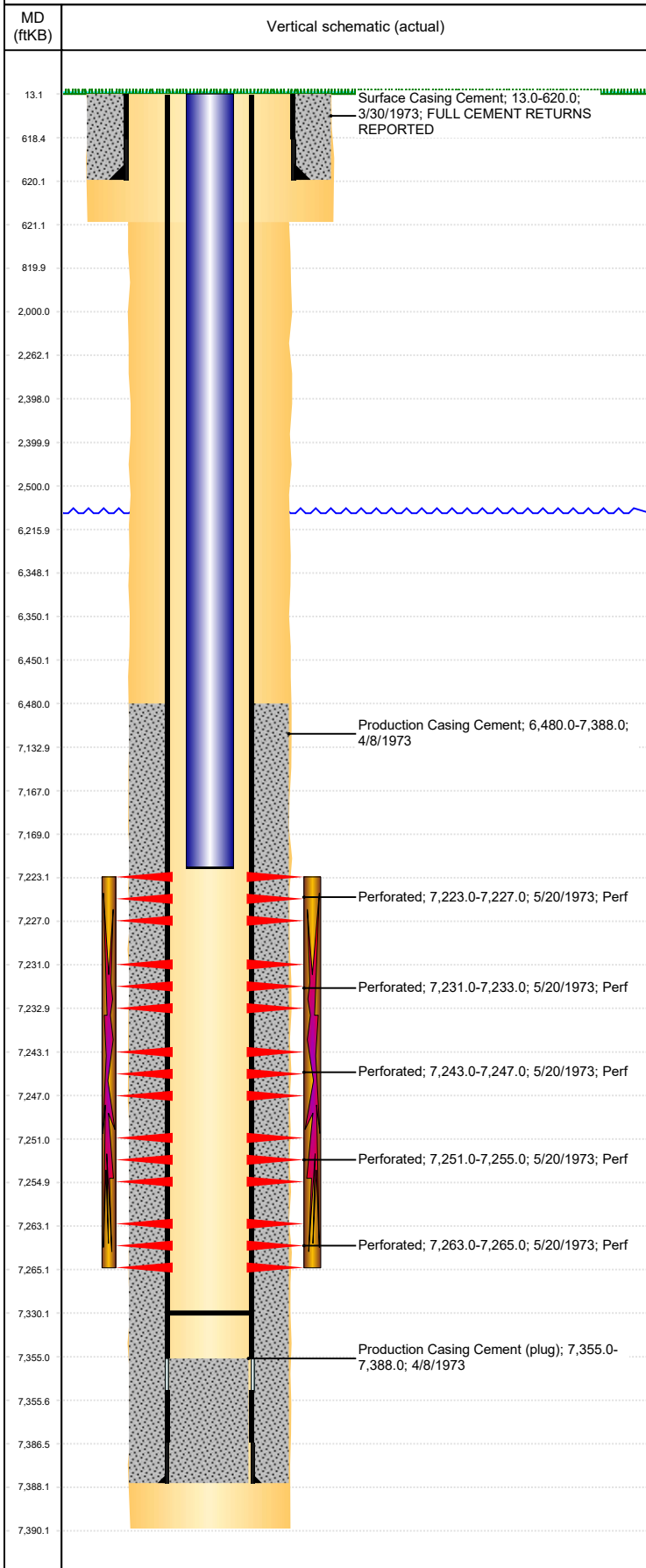


**Well Name: STATE 27**

VERTICAL, ORIGINAL HOLE, 2/20/2020 9:15:50 AM



Well Header									
API 05-123-07686		Business Unit DJ BASIN			District 15		Well Config VERTICAL		
KB - GL / MSL (ft... 13.00		Spud Date 3/29/1973		P & A Date		Well Production Status SI			SoRT No
Comment PER 11/1997 SUNDRY NOTICE: WELL SHUT IN SINCE 01/1996. STATE ALSO SHOWS WELL STATUS AS PR AS OF 2/1/15.  STATE LEASE# 70-7856  2000# WELLHEAD									
Surface Location (Congressional)									
Qtr 3 C	Qtr 4 SW	Section 28	Twnshp 3	Twnsh... N	Range 63	Rng E/... W	Actual Latitude (°) 40.19281337	Actual Longitude (°) -104.44733597	
Wellbore Sections									
Section Des			Size (in)			Act Top, MD (ftKB)		Act Btm, MD (ftKB)	
SURFACE			12 1/4			13		621	
PRODUCTION			7 7/8			621		7,390	
Casing Strings									
Csg Des		Run Date		OD (in)	Wt/Len (lb/ft)	Grade	Top, MD (ftKB)	MD (ftKB)	
Surface		3/30/1973		8 5/8	24.00	H-40	13.0	620.0	
Production		4/8/1973		4 1/2	11.60	K-55	13.0	7,388.0	
Cement									
Des				Start Date		Top (ftKB)		Btm (ftKB)	
Surface Casing Cement				3/30/1973		13.0		620.0	
Production Casing Cement				4/8/1973		6,480.0		7,388.0	
Zone Statuses									
Zone Name		Status Date	Status	Fluid Type	Job			Prod Method	
J SAND		7/14/2010	PR						
J SAND		6/13/2017	SI						
Perforation Data									
Linked Zone		Bnch/Stg	Entered Shot Total	Top (ftKB)		Btm (ftKB)		Date	
J SAND, ORIGINAL HOLE			4	7,223.00		7,227.00		5/20/1973	
J SAND, ORIGINAL HOLE			4	7,231.00		7,233.00		5/20/1973	
J SAND, ORIGINAL HOLE			4	7,243.00		7,247.00		5/20/1973	
J SAND, ORIGINAL HOLE			4	7,251.00		7,255.00		5/20/1973	
J SAND, ORIGINAL HOLE			4	7,263.00		7,265.00		5/20/1973	
Stimulation Intervals									
Zone			Start Date			Top (ftKB)		Btm (ftKB)	
J SAND, ORIGINAL HOLE			5/21/1973			7,223.0		7,265.0	
Other In Hole									
Run Date		Des				OD (in)	Top (ftKB)	Btm (ftKB)	
Logs									
Date		Type				Top, MD (ftKB)		Btm, MD (ftKB)	
4/7/1973		COMPENSATED DENSITY				4,000.0		7,392.0	
4/7/1973		INDUCTION				622.0		7,391.0	
5/30/1973		CEMENT BOND				6,300.0		7,327.0	
4/20/2018		GYRO				13.0		7,150.0	
Plug Back Total Depths									
Date		Type		Com				Depth (ftKB)	
5/30/1973		FILL		DEPTH LOGGER ON CBL				7,329.0	
6/23/1989		FILL		TAGGED FILL				7,330.0	