


BEST IMAGE
AVAILABLE

Form PS-102

R. 42 W.



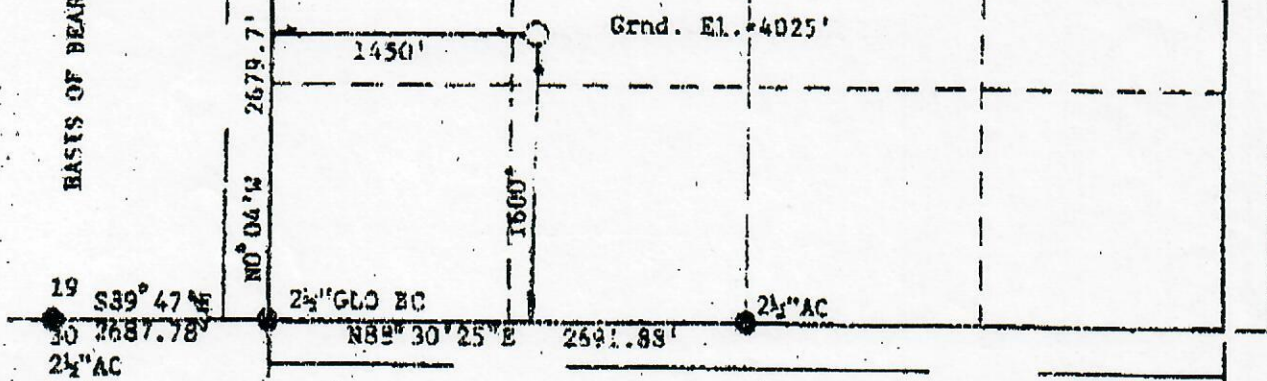
 EASTS OF BEARINGS: The south line of the SE 1/4 of Section 19
 S89°47'E per GLO "1900"

Directions to location: Beginning at the intersection of Highway 40
 and the main street in the Town of Arapahoe. Go east on Hwy. 40
 0.5 mile to County Road 54. Go South on C.R. 54 8 miles m/l to
 C.R. "K". Go east on C.R. "K" 1.0 mile to private trail south.
 Go South, 0.7 mile and East, 1450' to the location.

NOTES:

There are no improvements within 200' of the location.
 Elevation is determined from the NGVD 1929 Datum.
 The location falls in pasture grass.

N

 T.
 15
 S.


Scale: 1"=1000'

Powers Elevation of Denver, Colorado has in accordance with a request
 from Bill Chatham for Amoco Production Co.
 determined the location of Red Rock #1-20
 to be 1600' FSL & 1450' FWL Section 20, Township 15 South
 Range 42 West of the Sixth Principal Meridian,
 Cheyenne County, Colorado

I hereby certify that this plan is a
 accurate representation of a
 survey showing the location of
 Red Rock #1-20

Date: February 13, 1996

Licensed Land Surveyor No. _____
 State of Colorado

