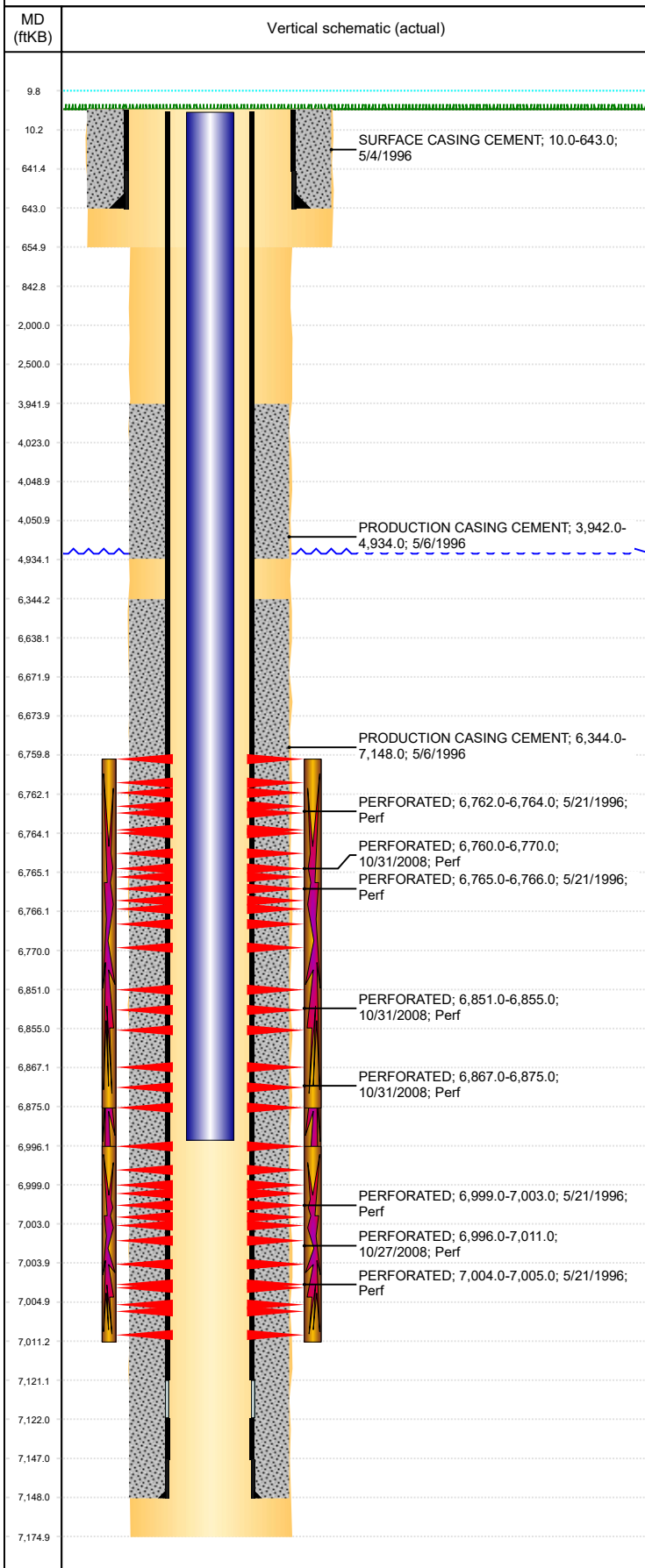


Well Name: HSR-GUTTERSEN-STATE 10-28

VERTICAL, ORIGINAL HOLE, 2/19/2020 8:10:27 AM



Well Header										
API 05-123-19170		Business Unit DJ BASIN			District 15		Well Config VERTICAL			
KB - GL / MSL (ft... 10.00		Spud Date 5/4/1996		P & A Date		Well Production Status SI			SoRT No	
Comment LIMITED ENTRY										
Surface Location (Congressional)										
Qtr 3 NW	Qtr 4 SE	Section 28	Twnshp 3	Twنش... N	Range 64	Rng E/... W	Actual Latitude (°) 40.19487320	Actual Longitude (°) -104.55472890		
Wellbore Sections										
Section Des			Size (in)			Act Top, MD (ftKB)		Act Btm, MD (ftKB)		
SURFACE			12 1/4			10		655		
PRODUCTION			7 7/8			655		7,175		
Casing Strings										
Csg Des			Run Date		OD (in)	Wt/Len (lb/ft)	Grade	Top, MD (ftKB)	MD (ftKB)	
Surface			5/4/1996		8 5/8	23.00	J-55	10.0	643.0	
Production			5/6/1996		4 1/2	11.60	I-70	10.0	7,148.0	
Cement										
Des					Start Date		Top (ftKB)		Btm (ftKB)	
SURFACE CASING CEMENT					5/4/1996		10.0		643.0	
PRODUCTION CASING CEMENT					5/6/1996		3,942.0		4,934.0	
PRODUCTION CASING CEMENT					5/6/1996		6,344.0		7,148.0	
Zone Statuses										
Zone Name		Status Date		Status	Fluid Type	Job			Prod Method	
NIOBRARA		11/18/2008		PR	Water	RE-FRAC, 10/24/2008 00:00			Flowing	
NIOBRARA		5/5/2014		PR					Flowing	
CODELL		5/5/2014		PR					Flowing	
CODELL		10/27/2016		SI						
Perforation Data										
Linked Zone		Bnch/Stg		Entered Shot Total		Top (ftKB)		Btm (ftKB)		Date
NIOBRARA, ORIGINAL HOLE		B		30		6,760.00		6,770.00		10/31/2008
NIOBRARA, ORIGINAL HOLE		B		4		6,762.00		6,764.00		5/21/1996
NIOBRARA, ORIGINAL HOLE		B		1		6,765.00		6,766.00		5/21/1996
NIOBRARA, ORIGINAL HOLE		C		12		6,851.00		6,855.00		10/31/2008
NIOBRARA, ORIGINAL HOLE		C		24		6,867.00		6,875.00		10/31/2008
CODELL, ORIGINAL HOLE				60		6,996.00		7,011.00		10/27/2008
CODELL, ORIGINAL HOLE				8		6,999.00		7,003.00		5/21/1996
CODELL, ORIGINAL HOLE				1		7,004.00		7,005.00		5/21/1996
Stimulation Intervals										
Zone				Start Date			Top (ftKB)		Btm (ftKB)	
NIOBRARA-CODELL, ORIGINAL HOLE				5/22/1996			6,760.0		7,011.0	
NIOBRARA, ORIGINAL HOLE				10/31/2008			6,760.0		6,875.0	
CODELL, ORIGINAL HOLE				10/31/2008			6,996.0		7,011.0	
Other In Hole										
Run Date		Des				OD (in)		Top (ftKB)		Btm (ftKB)
3/14/2016		Plunger Lift				1 7/8				
Logs										
Date		Type					Top, MD (ftKB)		Btm, MD (ftKB)	
5/7/1996		COMPENSATED DENSITY					4,100.0		7,157.0	
5/7/1996		INDUCTION					643.0		7,158.0	
5/10/1996		CEMENT BOND					3,800.0		7,084.0	
2/7/2012		GYRO					0.0		6,900.0	
Plug Back Total Depths										
Date		Type			Com					Depth (ftKB)
5/10/1996		FILL			DEPTH LOGGER ON CBL					7,090.0
11/7/2008		FILL			CIRCULATE CLEAN NO DEPTH GIVEN					