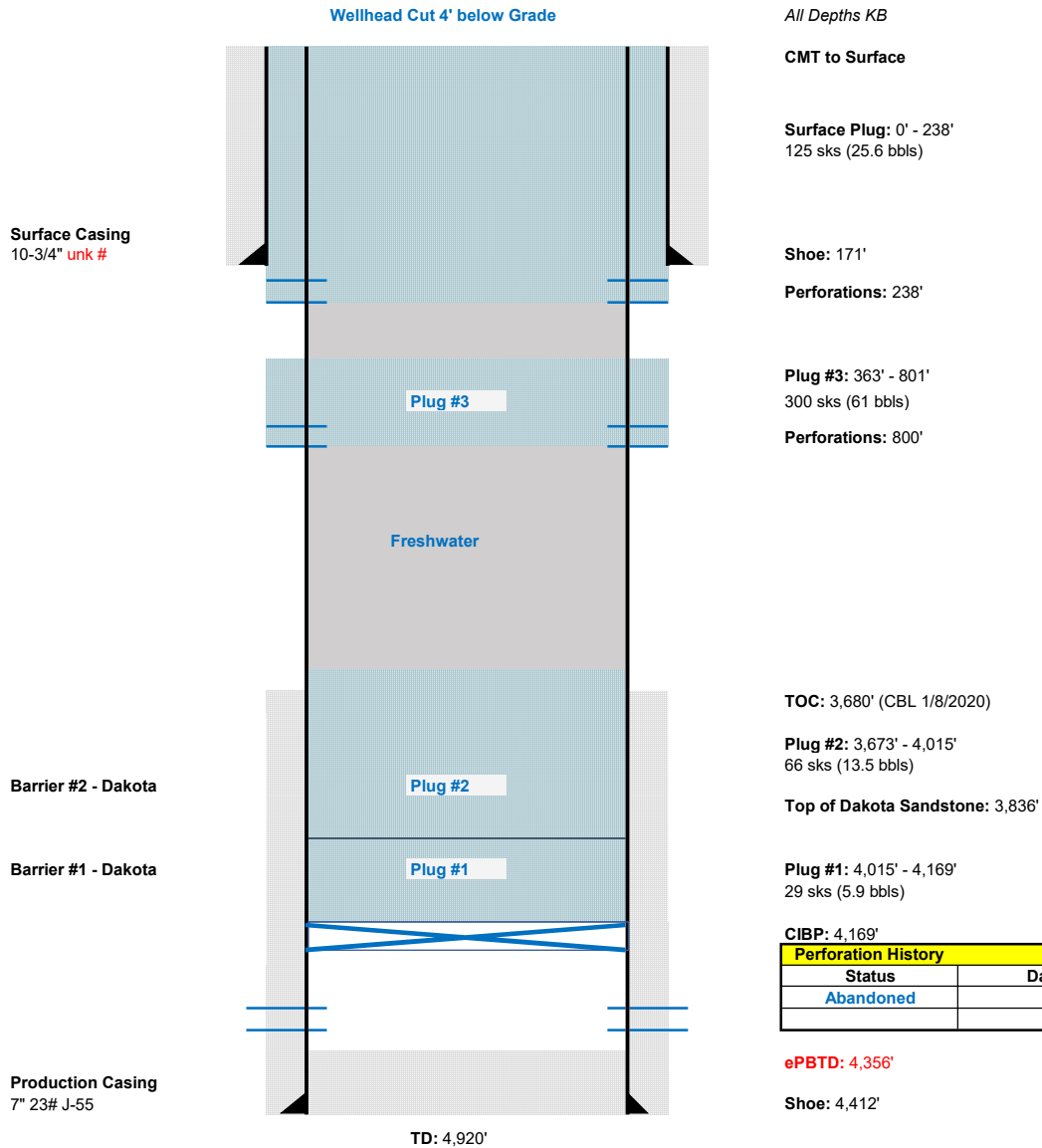




NAP Government 2-A / Federal 2-A
Garfield Colorado
Final Well Schematic

Completion Date: 07/1958
Ground Elev: 5,582'
KB Elev: 5,595'

API: 05-045-05193
Legals: NESW 22 7S 104W 6PM
Field: South Canyon



All Depths KB

CMT to Surface

Surface Plug: 0' - 238'
125 sks (25.6 bbls)

Shoe: 171'

Perforations: 238'

Plug #3: 363' - 801'
300 sks (61 bbls)

Perforations: 800'

TOC: 3,680' (CBL 1/8/2020)

Plug #2: 3,673' - 4,015'
66 sks (13.5 bbls)

Top of Dakota Sandstone: 3,836'

Plug #1: 4,015' - 4,169'
29 sks (5.9 bbls)

CIBP: 4,169'

Perforation History		
Status	Dakota Perforations	Holes
Abandoned	4230-4244'	4 jspf

ePBD: 4,356'

Shoe: 4,412'