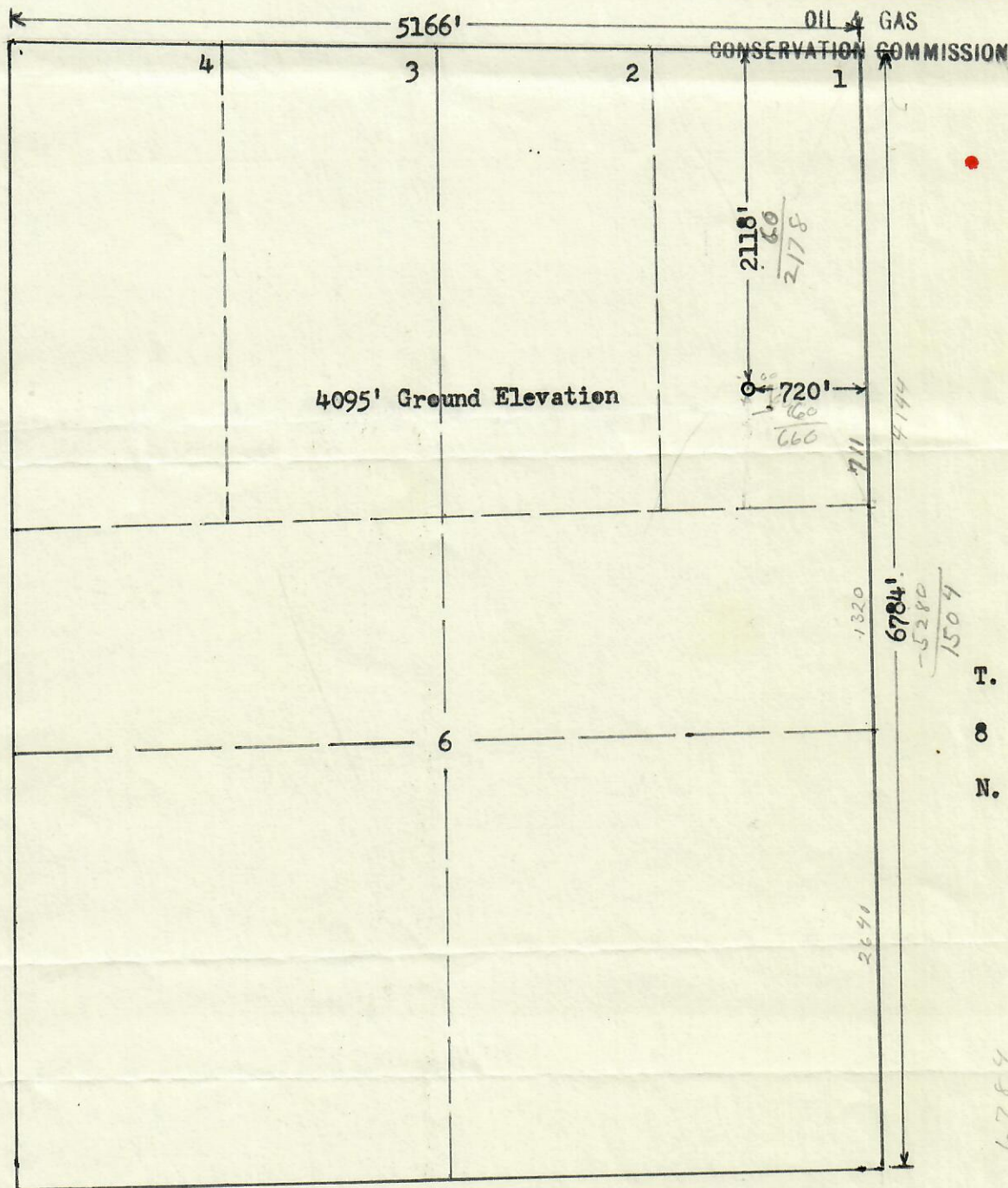
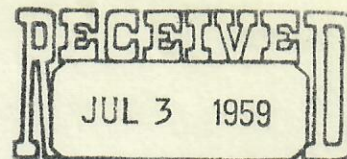




R. 52 W.



Scale: 1"=1000'

POWERS ELEVATION COMPANY OF DENVER, COLORADO HAS IN ACCORDANCE WITH A REQUEST FROM Tommy Miers FOR Melinda Oil Company DETERMINED THE LOCATION OF #1 Clifford Knudson TO BE 2118' FN & 720' FE Lot 1 SECTION 6 TOWNSHIP 8 North RANGE 52 West Sixth Principal MERIDIAN Logan COUNTY Colorado.

POWERS ELEVATION COMPANY

BY: *Burr Leibert*
BURR LEIBERT
Registered Land Surveyor

DATE: 6-23-59