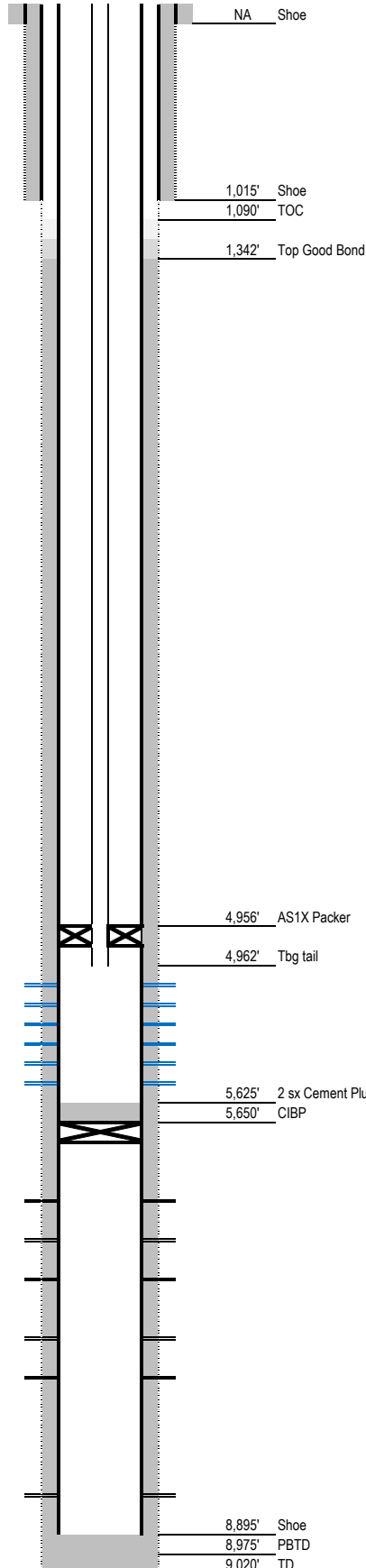


Laramie Energy

Current SWD Wellbore Diagram

Not to Scale

Geological Tops	Depth
Wasatch	4,065'
Ohio Creek	4,960'
Williams Fork	5,376'
TOG	5,972'
Cameo	7,552'
Rollins	7,969'
Cozzette	8,500'
Corcoran	8,674'



Well Name Buzzard Creek 22-03
API 05-077-08765-00
Surface Location 807' FSL & 1,981' FEL SWSE S15 T09S R93W
GPS Coordinates 39.271750 -107.753860
Bottom Hole Loc 642' FNL & 1,966' FWL S22 T09S R93W
Field Buzzard Creek
County, State Mesa, CO
Spud Date 6/20/2002
Completion Dates 8/2002, 7/2004, 5/2011, 2/2020
Diagram Date 2/17/2020
KB Elevation 7,390'
KB 12'
GL Elevation 7,378'

Hole	NA
Conductor	NA
Cement	NA

Intermediate Hole	12.25" @ 1,520'
Casing	8.625" 32# @ 1,015'
Cement	660 sx
TOC	calc @ surface

Production Hole	7.875" @ 9,020'
Casing (LINER)	4.5" 11.6# @ 8,895'
Cement	1260 sx
TOC	1,090'
Top Good Bond	1,342' CBL dated 5/3/2011

Tubing Details	#	Length	Depth
KB		15.00	15.00
7-1/16" x 2-3/8" TC1A hanger		0.74	15.74
2-3/8" 4.7# L80	1	32.06	47.80
2-3/8" 4.7# N80 pups		26.32	74.12
2-3/8" 4.7# L80	151	4874.21	4948.33
T2 on/off tool with 1.875" profile		1.68	4950.01
KLX 4-1/2" AS1X packer		6.48	4956.49
2-3/8" 4.7# N80 pup		4.05	4960.54
2-3/8" KXN nipple 1.875" / 1.791"		1.38	4961.92
2-3/8" pump out plug / re-entry guide		0.41	4962.33

Perforations	Interval	Net	Date	Status
Ohio Creek	4,999'-5,009'	10'	5/3/2011	Open
Ohio Creek	5,032'-5,084'	52'	5/3/2011	Open
Ohio Creek	5,147'-5,171'	24'	5/3/2011	Open
Ohio Creek	5,180'-5,240'	60'	2/9/2020	Open
Ohio Creek	5,260'-5,300'	40'	2/9/2020	Open
Ohio Creek	5,344'-5,364'	20'	2/9/2020	Open
Williams Fork	6,322'-6,551'		7/13/2004	Isolated
Williams Fork	6,640'-6,695'		5/25/2004	Isolated
Williams Fork	6,781'-6,824'		4/20/2004	Isolated
Williams Fork	7,004'-7,150'		2/29/2004	Isolated
Williams Fork	7,272'-7,465'		1/29/2004	Isolated
Cozzette	8,529'-8,590'		8/15/2002	Isolated