

# Inspection Photos

2/13/2020

Operator: EAGLE OPERATING INC - 26155

Location ID: 311824

Rio Blanco County, CO

Aaron Trujillo

NW Reclamation Specialist

COGCC

Inspection Photos  
Operator Name: EAGLE OPERATING INC - 26155  
Location ID: 311824



**Photo 1:** Photo shows all wells within the disturbance area. **1)** Equity Oil, PA 1972. **2)** Diamond Back, PA 1979. **3)** D&D, PA 1998. **4)** Diamond Back, PA 1979. **5)** Eagle Operating, PA 2015. **6)** D&D, PA 1979. **7)** Diamond Back, PA 1979. **8)** D&D, DA 1984. **9)** Diamond Back, PA 1979. **10)** Diamond Back, PA 1980. **11)** Eagle Operating, Active well.



Inspection Photos  
Operator Name: EAGLE OPERATING INC - 26155  
Location ID: 311824



**Photo 2:** Google Earth Aerial Imagery dated 6/1993. The only active wells at this point are the Emerald C 125 (103-4008) and the Emerald 275 (103-09135). Arrows (yellow) show well locations (yellow), pit (green), and tank batteries (red). Note no equipment is evident within circle at this time



Inspection Photos  
Operator Name: EAGLE OPERATING INC - 26155  
Location ID: 311824



**Photo 3:** Google Earth Aerial Imagery dated 8/2006. Photo shows no equipment is evident within circle at this time. Note: Form 10 #1097855 shows Eagle Operating Inc. as the Operator of the Locations effective 8/29/2002. Previously Equity Oil Co.





Inspection Photos  
Operator Name: EAGLE OPERATING INC - 26155  
Location ID: 311824

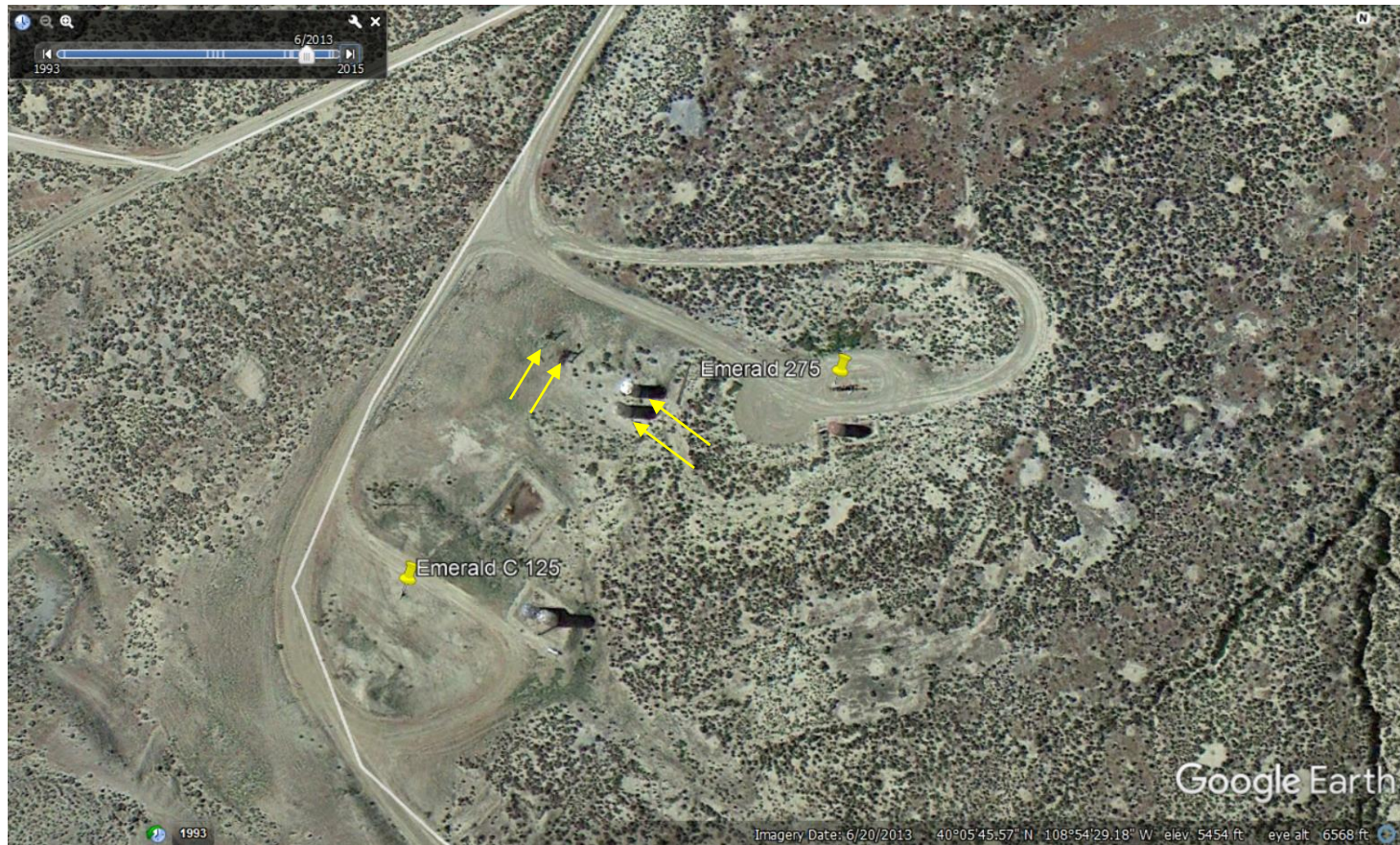


**Photo 4:** Google Earth Aerial Imagery dated 10/2011. First Google Earth aerial imagery that shows two tank batteries and two (2) pump units evident on the areas west of the Emerald 275





Inspection Photos  
Operator Name: EAGLE OPERATING INC - 26155  
Location ID: 311824



**Photo 5:** Google Earth Aerial Imagery dated 6/2013. More clear image showing the two tank batteries and two (2) pump units outlined in photo 4.





Inspection Photos  
Operator Name: EAGLE OPERATING INC - 26155  
Location ID: 311824



**Photo 6:** Continued from photo 5 zoomed in to show better image of the two (2) pump units, and two (2) tanks observed. Photo also shows additional equipment being stored east of the tanks.





Inspection Photos  
Operator Name: EAGLE OPERATING INC - 26155  
Location ID: 311824



**Photo 7:** Google Earth Aerial imagery dated 6/2015. Photo shows a third (3<sup>rd</sup>) pump jack, and a third (3<sup>rd</sup>) tank is now evident on the site. Photo also shows additional equipment evident east of the tanks, and pit has been closed. Unable to find pit closure records per Rule 905.b





Inspection Photos  
Operator Name: EAGLE OPERATING INC - 26155  
Location ID: 311824



**Photo 8:** 2017 USDA-FSA-APFO NAIP aerial image (ID No: M\_4010857\_NE\_12\_1\_20170901). Imagery shows a fourth (4<sup>th</sup>) tank is now evident.

Inspection Photos  
Operator Name: EAGLE OPERATING INC - 26155  
Location ID: 311824



**Photo 9:** Photo taken from the access road, west of the location, facing North. Photos 9-11 provides an overview of the Location. Photos show the three (3) pump jacks, and four (4) tank batteries stored on areas west of the Emerald 275.

Inspection Photos  
Operator Name: EAGLE OPERATING INC - 26155  
Location ID: 311824



**Photo 10:** See comments under photo 9.





Inspection Photos  
Operator Name: EAGLE OPERATING INC - 26155  
Location ID: 311824



**Photo 11:** See comments under photo 9. Photo also shows the active tank battery facility (E-M Emerald C-1 HZ) with two (2) Crude Oil ASTs



Inspection Photos  
Operator Name: EAGLE OPERATING INC - 26155  
Location ID: 311824



**Photo 12:** Photo shows the three (3) pump units stored west of the Emerald 275.



Inspection Photos  
Operator Name: EAGLE OPERATING INC - 26155  
Location ID: 311824



**Photo 13:** Photo of a dry well marker for the D&D Resources Inc's "Emerald C DCD #2" well. Well was SPUD 7/14/1994 and did not produce. Inspection dated 11/20/98 documents a dry hole marker on the Location with comments "No tank battery equipment", "General Housekeeping-OK", "OK to release"; No surface equipment appears to have been documented.



Inspection Photos  
Operator Name: EAGLE OPERATING INC - 26155  
Location ID: 311824



**Photo 14:** Photo of the northernmost tank observed stored on site. Tank labeled "Emerald-C-Well 275".



Inspection Photos  
Operator Name: EAGLE OPERATING INC - 26155  
Location ID: 311824



**Photo 15:** "Equity Oil" sign on other tank. Locations previously owned by Equity; Eagle Operating took ownership of the Equity Locations in 2002.





Inspection Photos  
Operator Name: EAGLE OPERATING INC - 26155  
Location ID: 311824



**Photo 16:** Label on one of the tanks observed on site stating “Eagle” and “Emerald 11”. The Emerald 11, API 103-05508, is approximately 1.2 miles northwest and was PAd by Eagle Operating in 2005.



Inspection Photos  
Operator Name: EAGLE OPERATING INC - 26155  
Location ID: 311824



**Photo 17:** Photo of trash debris observed just to the south of the southernmost tank.





Inspection Photos  
Operator Name: EAGLE OPERATING INC - 26155  
Location ID: 311824



**Photo 18:** Photo taken from the east of the stored tanks. Photo shows additional equipment being stored on Location.





Inspection Photos  
Operator Name: EAGLE OPERATING INC - 26155  
Location ID: 311824



**Photo 19:** Continued from photo 18. Photo shows additional equipment stored on the Location.



Inspection Photos  
Operator Name: EAGLE OPERATING INC - 26155  
Location ID: 311824



20200213

40.0961° N 108.90817° W

**Photo 20:** Photo taken from the west of Eagle Operating's Emerald #275 well, facing east



**COLORADO**  
Oil & Gas Conservation  
Commission  
Department of Natural Resources



Inspection Photos  
Operator Name: EAGLE OPERATING INC - 26155  
Location ID: 311824



**Photo 21:** Photo of the Emerald #275 Well. Photo shows signage at well matches with tank observed in photo #14





Inspection Photos  
Operator Name: EAGLE OPERATING INC - 26155  
Location ID: 311824



**Photo 22:** Photo taken from that south end of the Emerald #275 well Location, facing south. Photo shows current active produced water tank on the Location. Label indicates capacity @378.03 bbl. Signage on tank matches with signage on stored tank in photo #14; It appears the tank in photo 14 was replaced with this tank, was then stored on site rather than removed.



Inspection Photos  
Operator Name: EAGLE OPERATING INC - 26155  
Location ID: 311824



**Photo 23:** Photo taken from the two (2) 400 bbl Crude Oil ASTs to the south of the Emerald #275.



Inspection Photos  
Operator Name: EAGLE OPERATING INC - 26155  
Location ID: 311824



**Photo 24:** Signage at Crude Oil ASTs. Signage indicates tank battery is associated with the E-M Emerald #C-1HZ well (103-10261) ~1/3 mile to the east.

