



BEST IMAGE AVAILABLE

RECEIVED

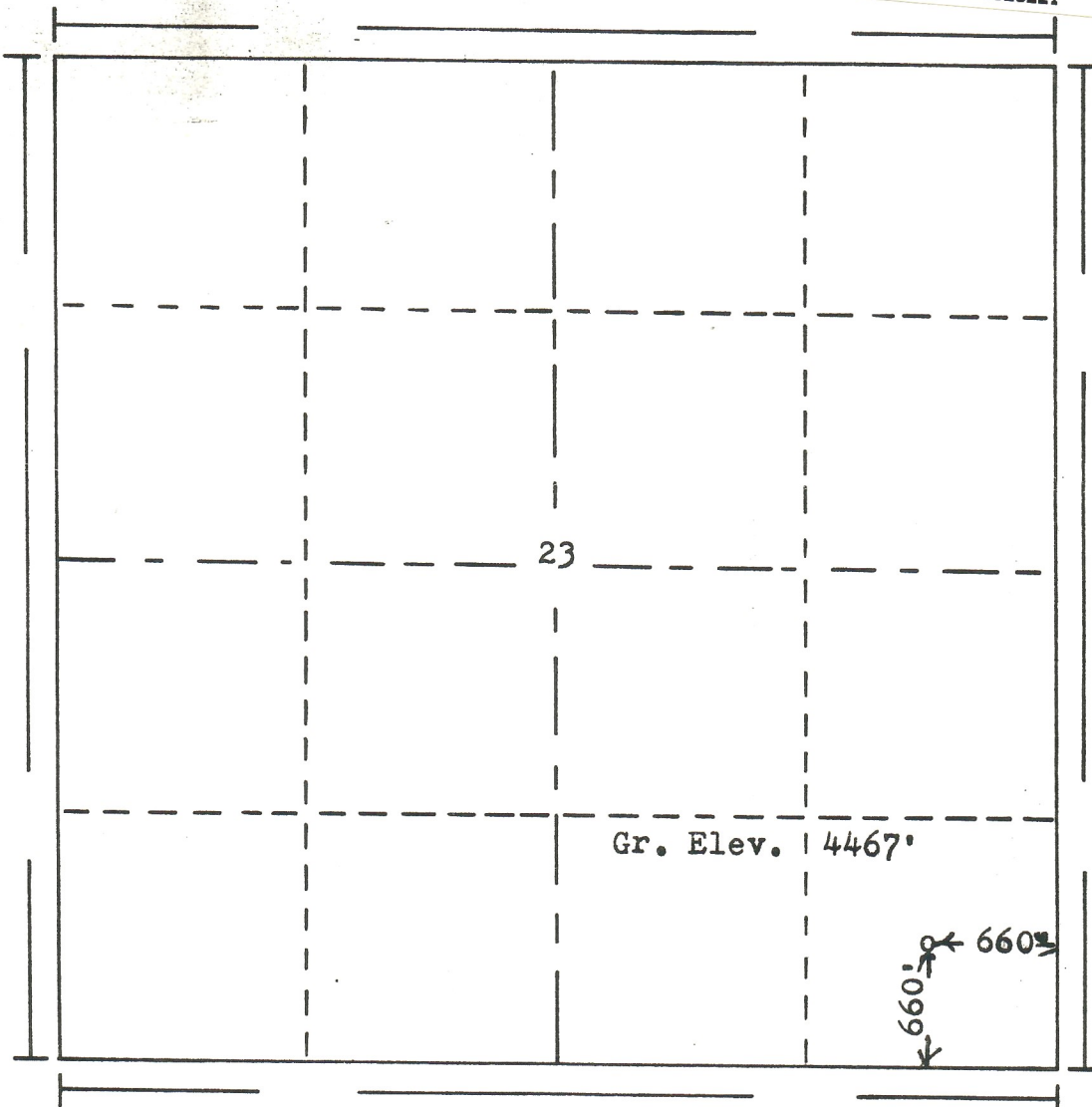
AUG 7 1984



00523221

R. 46W

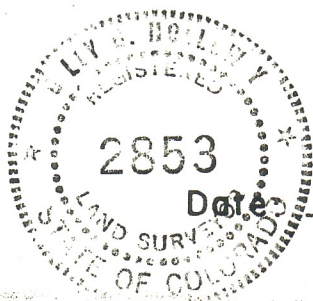
T. 15S



Scale... 1" = 1000'

Powers Elevation of Denver, Colorado
 has in accordance with a request from Mr. Malson
 for Amoco production Co.
 determined the location of 205 Champlin Amoco A-7
 to be CSE SE Section 23 Township 15S
 Range 46W of the 6th Principal Meridian
 Cheyenne County, Colorado

I hereby certify that this plat is an
 accurate representation of a correct
 survey showing the location of



3-16-84

Richard J. Henry

Licensed Land Surveyor No. 2853
 State of Colorado