



**Well Services**  
E - L I N E

**RADIAL BOND TOOL  
GAMMA RAY  
CCL**

Company NOBLE ENERGY  
Well STROHAUER PC G 05-28D  
Field WATTENBERG  
County WELD  
State COLORADO

Company NOBLE ENERGY  
Well STROHAUER PC G 05-28D  
Field WATTENBERG  
County WELD State COLORADO

Location: API # : 05-123-34769  
SHL: 523' FNL & 694' FEL  
NE/NE  
SEC 32 TWP 5N RGE 65W  
Permanent Datum GL Elevation 4675'  
Log Measured From KB 13'  
Drilling Measured From KB  
Other Services  
K.B. 4688'  
D.F. 4687'  
G.L. 4675'

Date 7-25-2019

Run Number ONE  
Depth Driller 7652'  
Depth Logger 852'  
Bottom Logged Interval 845'  
Top Log Interval SURFACE  
Open Hole Size NA  
Type Fluid WATER  
Density / Viscosity NA  
Max. Recorded Temp. 82  
Estimated Cement Top 465'  
Time Well Ready NA  
Time Logger on Bottom NA  
Equipment Number 7770  
Location MILLIKEN CO  
Recorded By A.STEERMAN  
Witnessed By D.RUSSEL

Borehole Record  
Run Number Bit From To Size Weight From To

Casing Record	Size	Wgt/Ft	Top	Bottom
Surface String	8 5/8"	24#	SURFACE	681'
Prot. String				
Production String	4.5"	11.6#	SURFACE	7642'
Liner				

<<< Fold Here >>>

All interpretations are opinions based on inferences from electrical or other measurements and we cannot and do not guarantee the accuracy or correctness of any interpretation, and we shall not, except in the case of gross or willful negligence on our part, be liable or responsible for any loss, costs, damages, or expenses incurred or sustained by anyone resulting from any interpretation made by any of our officers, agents or employees. These interpretations are also subject to our general terms and conditions set out in our current Price Schedule.

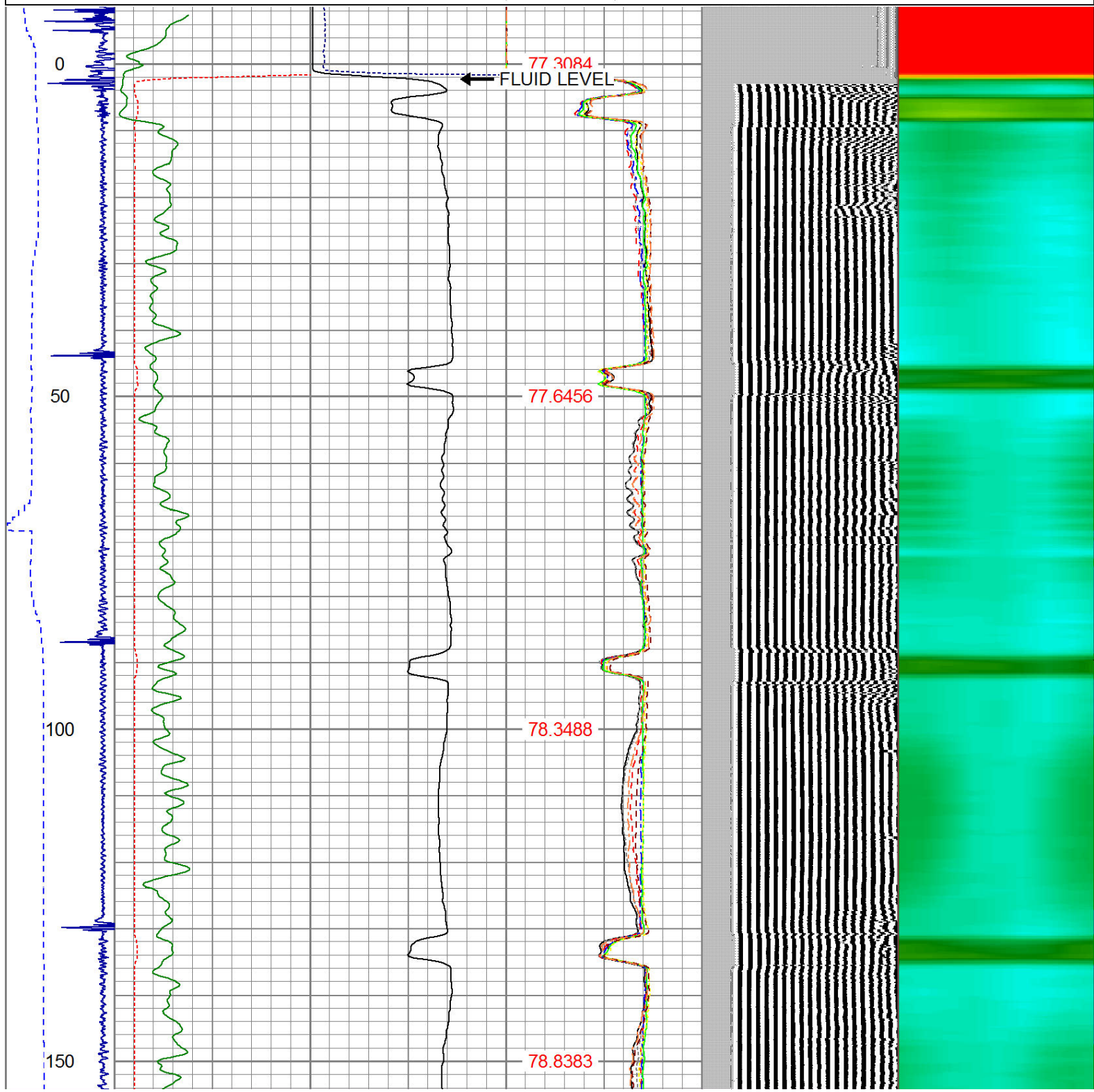
Comments

RAN CBL TO VERIFY CEMENT BOND  
THANK YOU FOR USING SPN WELL SERVICES!!

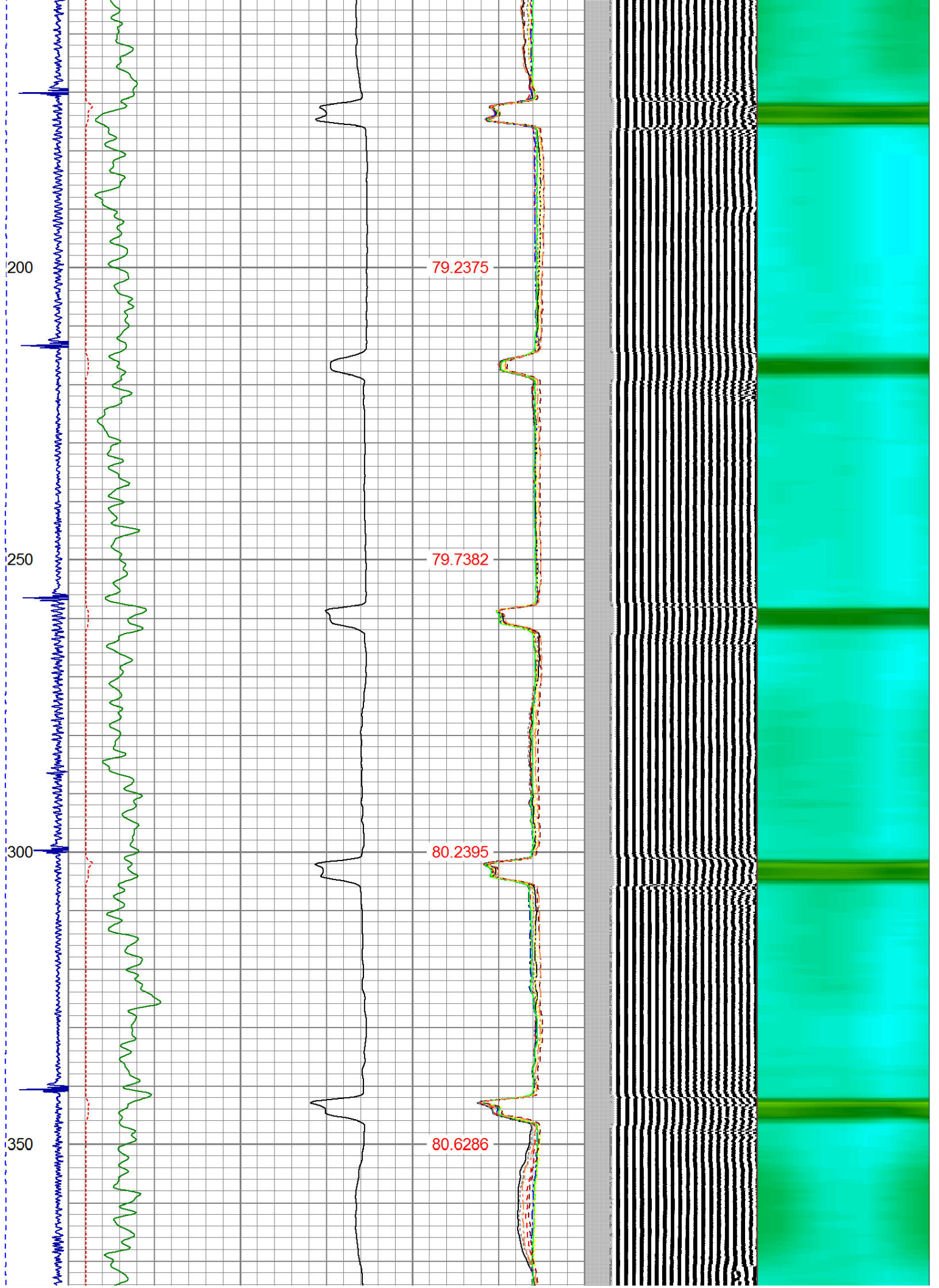
Sensor	Offset (ft)	Schematic	Description	Len (ft)	OD (in)	Wt (lb)
HEADVOLT	13.25					

IntTemp	11.83				
WVF3FT	8.58				
WVFCAL	8.58				
WVFS1	8.58				
WVFS2	8.58				
WVFS3	8.58				
WVFS4	8.58				
WVFS5	8.58				
WVFS6	8.58				
WVFS7	8.58				
WVFS8	8.58				
WVF5FT	7.58				
CCL	3.64				
GR	0.90				
Dataset: strohauer pc g 05-28d.db: field/well/run1/pass5 Total Length: 13.25 ft Total Weight: 120.00 lb O.D. 2.75 in					

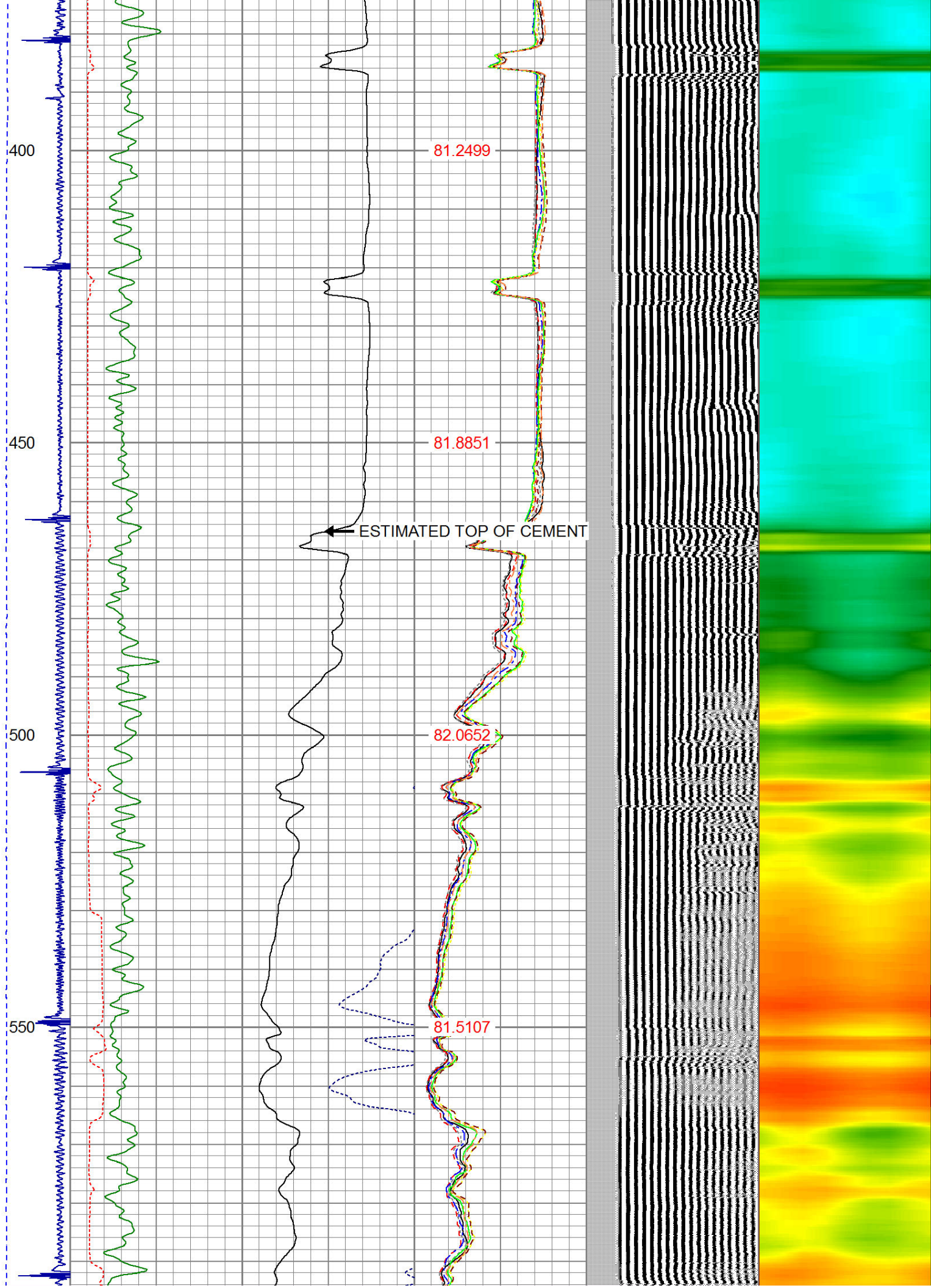
-9	CCL	1	200	TT (usec)	800	0	AMP (mV)	100	0	AMPS1	100	200	VDL	1200	1	Cement Map	8
LSPD			0	GR (GAPI)	200	0	AMPx5 (mV)	20	0	AMPS2	100				1		100
(ft/min)			200	GR (GAPI)	400				0	AMPS3	100						
0									0	AMPS4	100						
									0	AMPS5	100						
									0	AMPS6	100						
									0	AMPS7	100						
									0	AMPS8	100						
										IntTemp							
										(degF)							



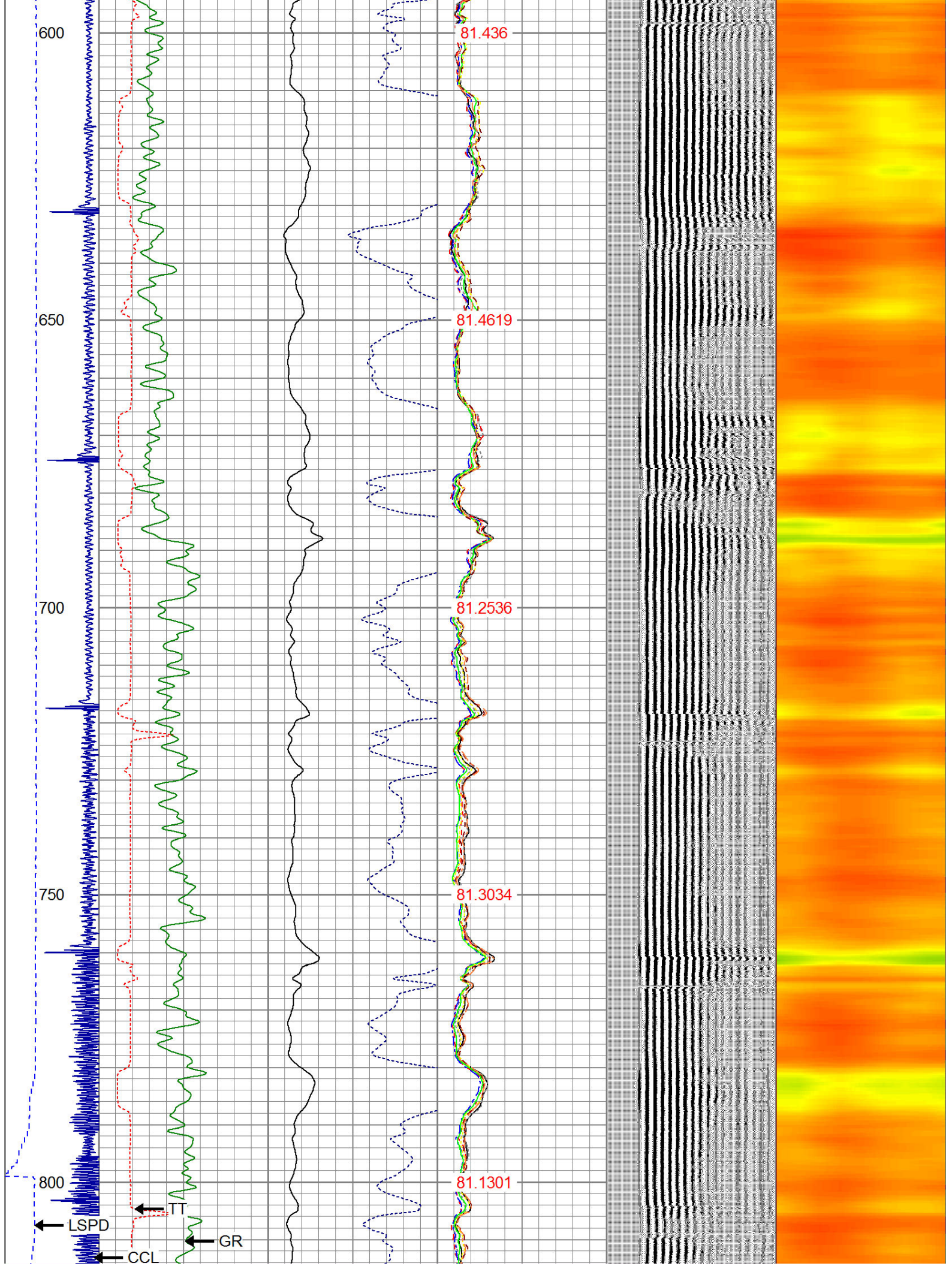


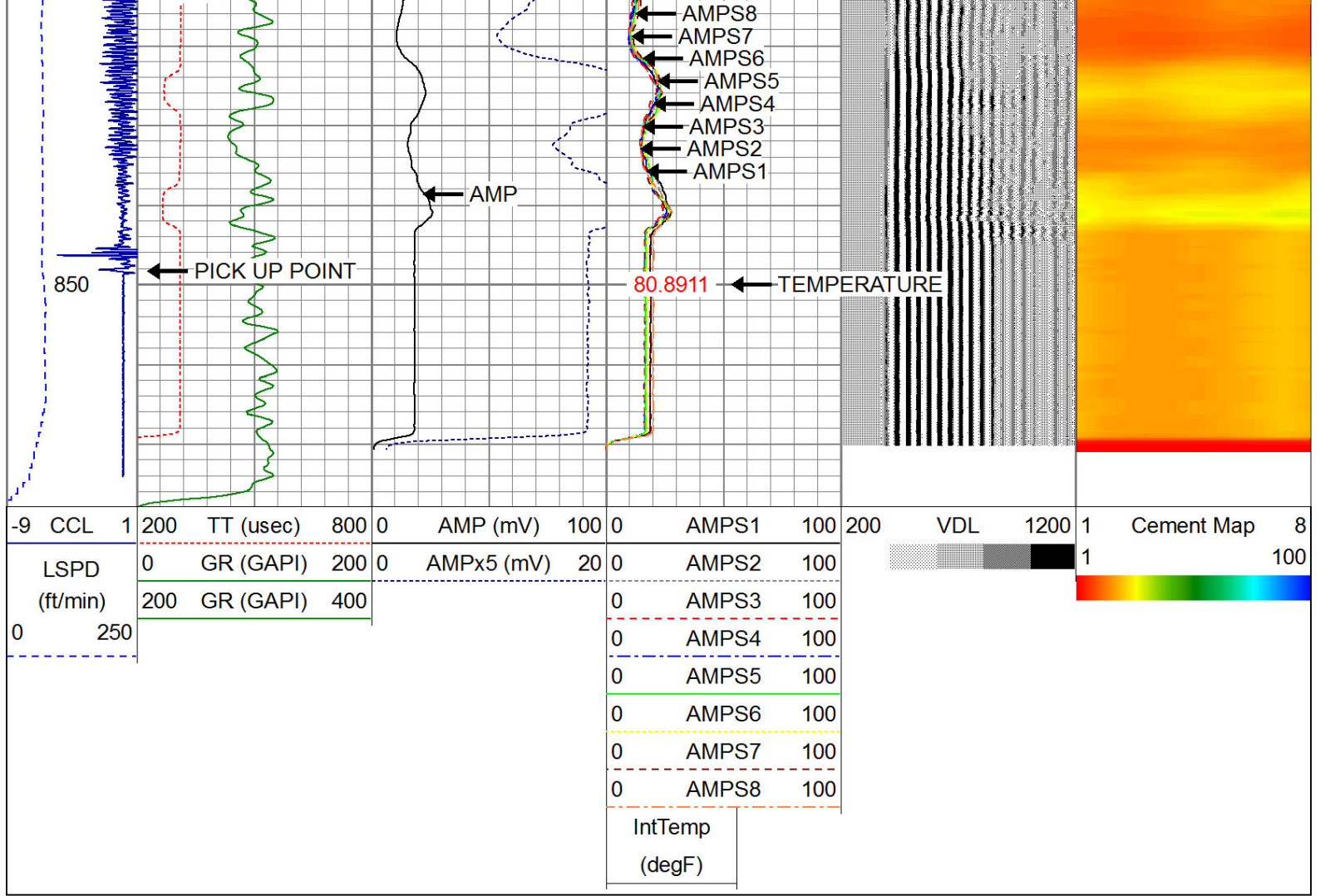












**Well Services**  
E - L I N E

Company NOBLE ENERGY  
Well STROMAUER PC G 05-28D  
Field WATTENBERG  
County WELD  
State COLORADO