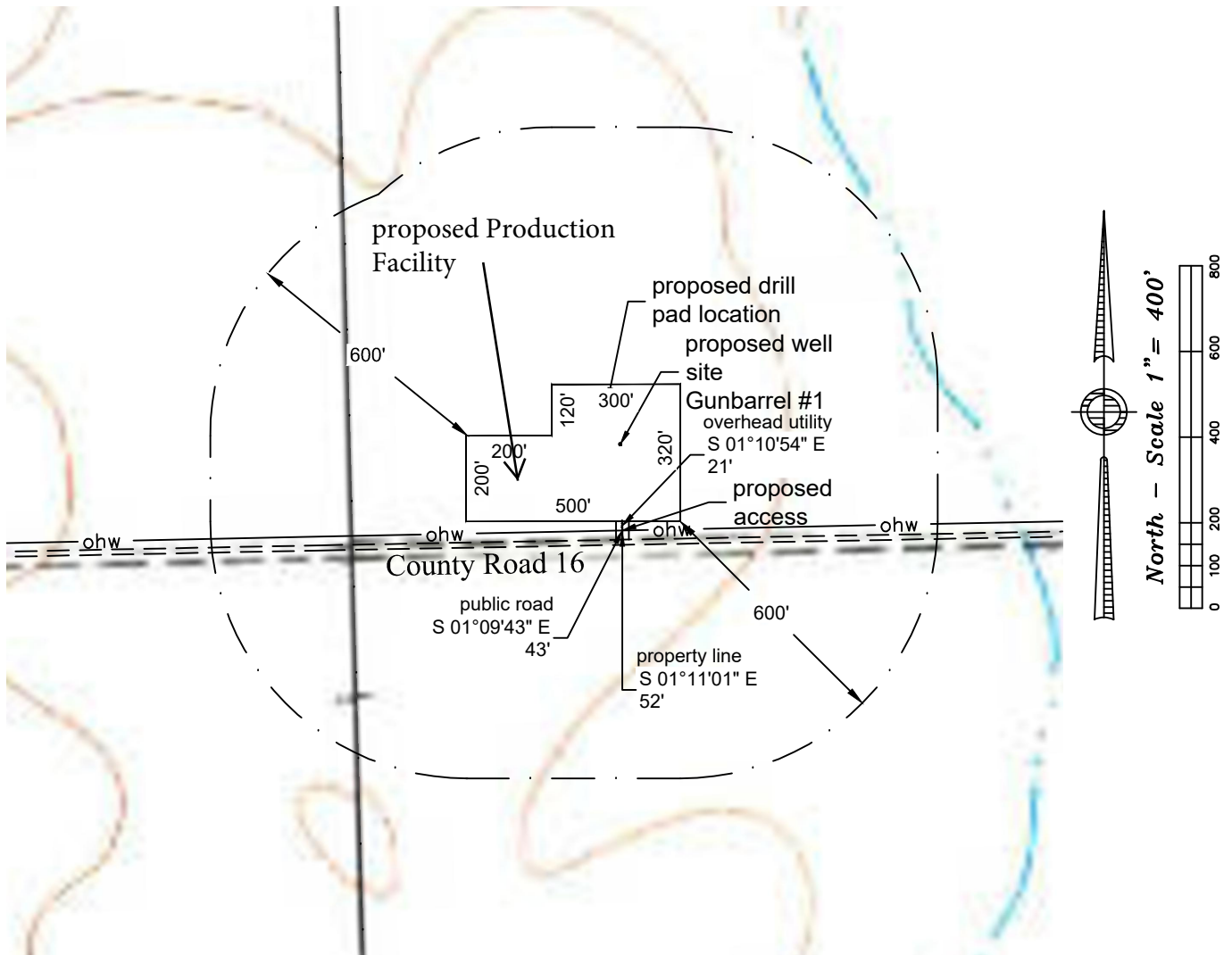


# Location drawing



## Distance to nearest from Well:

|                                   |       |
|-----------------------------------|-------|
| Building:                         | 2724' |
| Building Unit:                    | 3305' |
| High Occupancy Building Unit:     | 5280' |
| Designated Outside Activity Area: | 5280' |
| Public Road:                      | 223'  |
| Aboveground Utility:              | 201'  |
| Railroad:                         | 5280' |
| Property Line:                    | 232'  |

## Distance to nearest from Production Facility:

|                                   |       |
|-----------------------------------|-------|
| Building:                         | 2850' |
| Building Unit:                    | 3141' |
| High Occupancy Building Unit:     | 5280' |
| Designated Outside Activity Area: | 5280' |
| Public Road:                      | 62'   |
| Aboveground Utility:              | 40'   |
| Railroad:                         | 5280' |
| Property Line:                    | 71'   |

P:\Project\2018\18117\dwg\18117\_imp.dwg December 20, 2018 - 1:55pm

|                                  |                     |                                   |  |                            |
|----------------------------------|---------------------|-----------------------------------|--|----------------------------|
| Well Name:                       | <b>Gunbarrel #1</b> | Field Date<br><b>10.31.2018</b>   | Prepared for:  | Project#: <b>18117.001</b> |
|                                  |                     | Party Chief<br><b>DCB</b>         | <b>St. Croix Operating, Inc.</b>   |                            |
| Section 8-T3S-R50W-6th PM, SW-SE |                     | Proj. Manager<br><b>MDG</b>       |  |                            |
| Washington County, Colorado      |                     | Drawing Date<br><b>12.20.2018</b> |  |                            |
|                                  |                     |                                   | <b>PLS Group</b><br>6843 North Franklin Avenue<br>Loveland, Colorado 80538<br>970.669.2100 office - 970.669.3652 fax |                            |