

Eddy Oil Company

Hergenreder 32-15 - D&A Re-Entry

EXISTING WELLBORE DIAGRAM

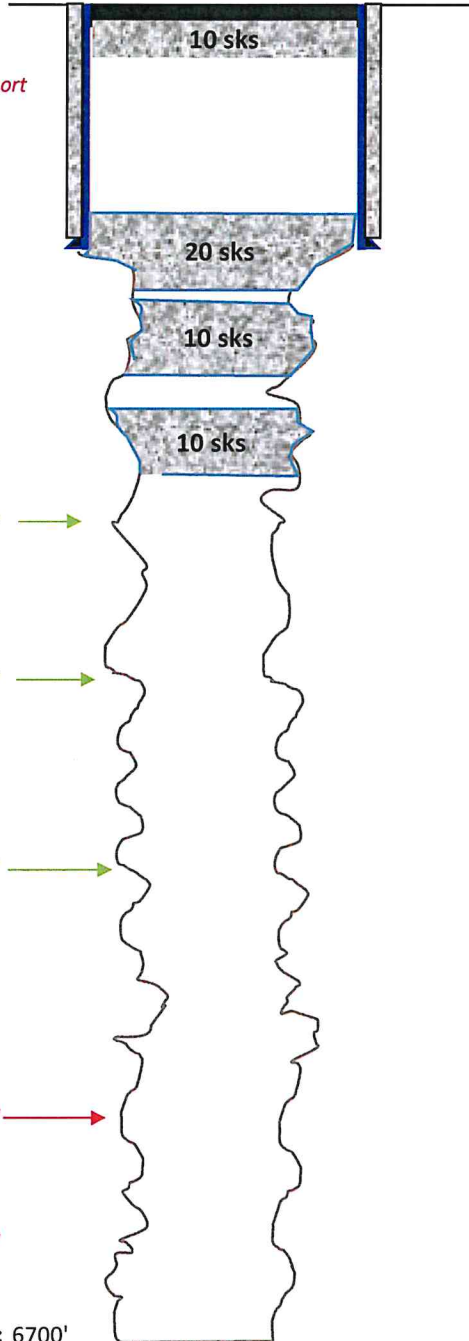
Completed

Planned

Geology

*Est tops from completion report

*Est tops from Prog



Elevation: 4568' GL

Location: 605' FSL, 1895' FEL

SWSE Sec 32, T5N, R63W

Weld County, CO

Field: Wattenberg

Zone: Codell

Spud Date: 9/5/1986

API: 05-123-13148

Surface Casing:

12-1/4" hole

8-5/8", 24# set @ 303'

Cement w/ 250 sx Reg w/ 3%CaCl

D&A: 9/10/1986

10 Sack Plug @ Surface

20 Sack Plug @ 310'

10 Sack Plug @ 350'

10 Sack Plug @ 450'

Production Casing:

7-7/8" hole according to logs

Eddy Oil Company

Hergenreder 32-15 - D&A Re-Entry

PLANNED WELLBORE DIAGRAM

Completed

Planned

Geology

*Est tops from completion report

*Est tops from Prog

Set 160 sx plug in over surface shoe
to surface (450' - 0')

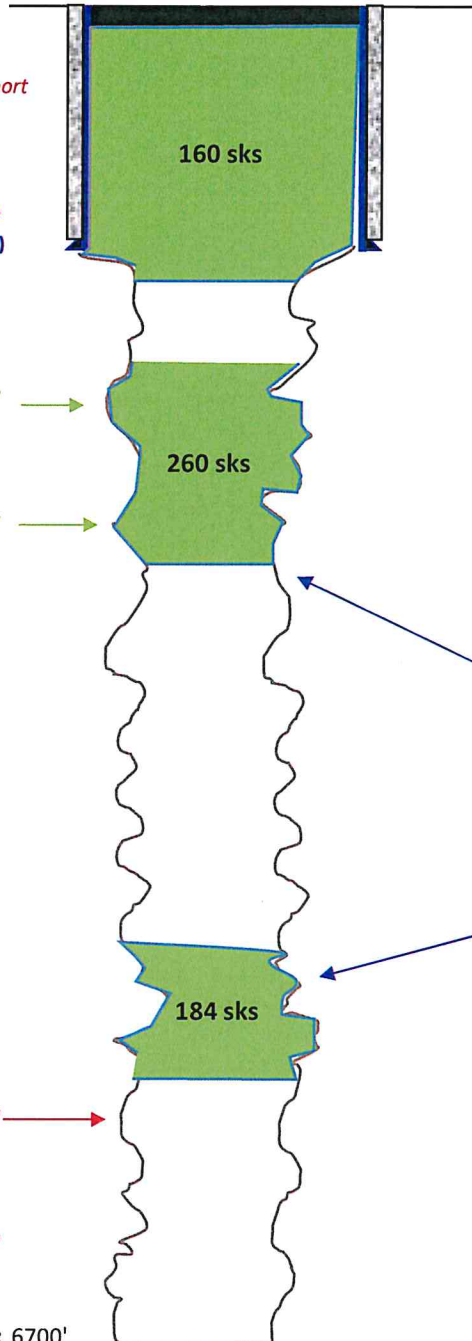
Top of Fox Hills @ xxx'

Bottom of Fox Hills @xxx'

Top of Niobrara @ 6342'

Top of Codell @ NA - Faulted'

TD: 6700'



Elevation: 4568' GL

Location: 605' FSL, 1895' FEL

SWSE Sec 32, T5N, R63W

Weld County, CO

Field: Wattenberg

Zone: Codell

Spud Date: 9/5/1986

API: 05-123-13148

Surface Casing:

12-1/4" hole

8-5/8", 24# set @ 303'

Cement w/ 250 sx Reg w/ 3%CaCl

D&A: 9/10/1986

10 Sack Plug @ Surface

20 Sack Plug @ 310'

10 Sack Plug @ 350'

10 Sack Plug @ 450'

Set 260 sx plug over Fox Hills
from ~ 1,600' to 900'

Set 184 sx plug over Niobrara
from ~ 6,000' to 5,500'

Production Casing:

7-7/8" hole according to logs