

RECEIVED

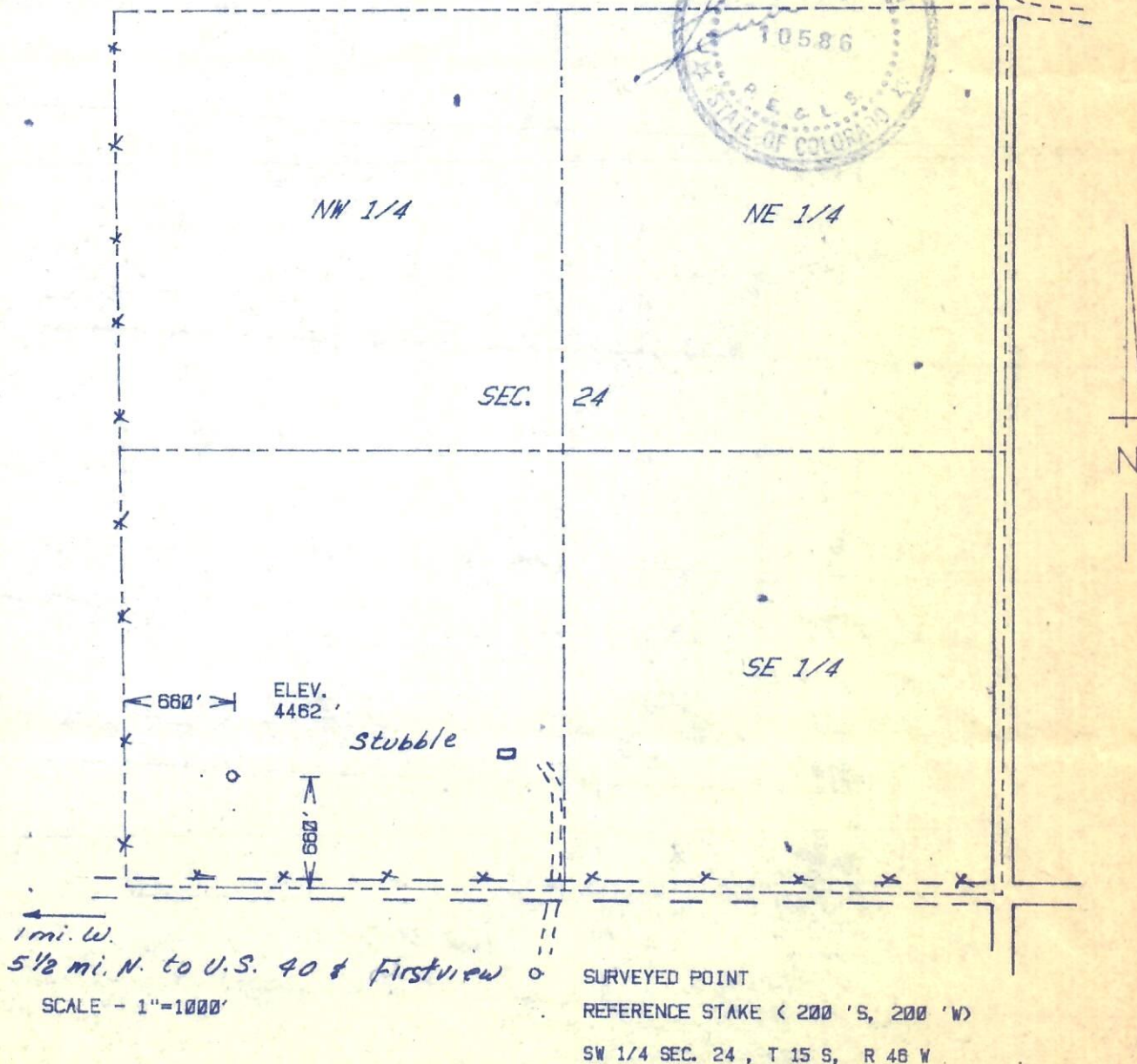
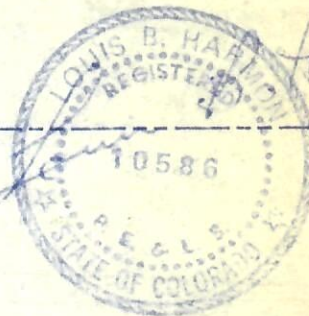
OCT 9 1984

COLO. OIL & GAS CONS. COMM.

The accompanying plat is an accurate representation showing the location of a proposed well. This location may be described as a point 660 feet north of the south line, and 660 feet east of the west line of Section 24, Township 15 S Range 46 W of the 6th P.M., CHEYENNE County, COLORADO. The surface elevation at this point is 4462 feet m.s.l.



BEST IMAGE
AVAILABLE



HARMON
ENGINEERING
SERVICES

LOWE #24-13

LEWIS & CLARK EXPLORATION

CHEYENNE CO., COLORADO

3 OCTOBER 1984

BEST IMAGE
AVAILABLE

