



# Verdad Resources LLC

Schlumberger

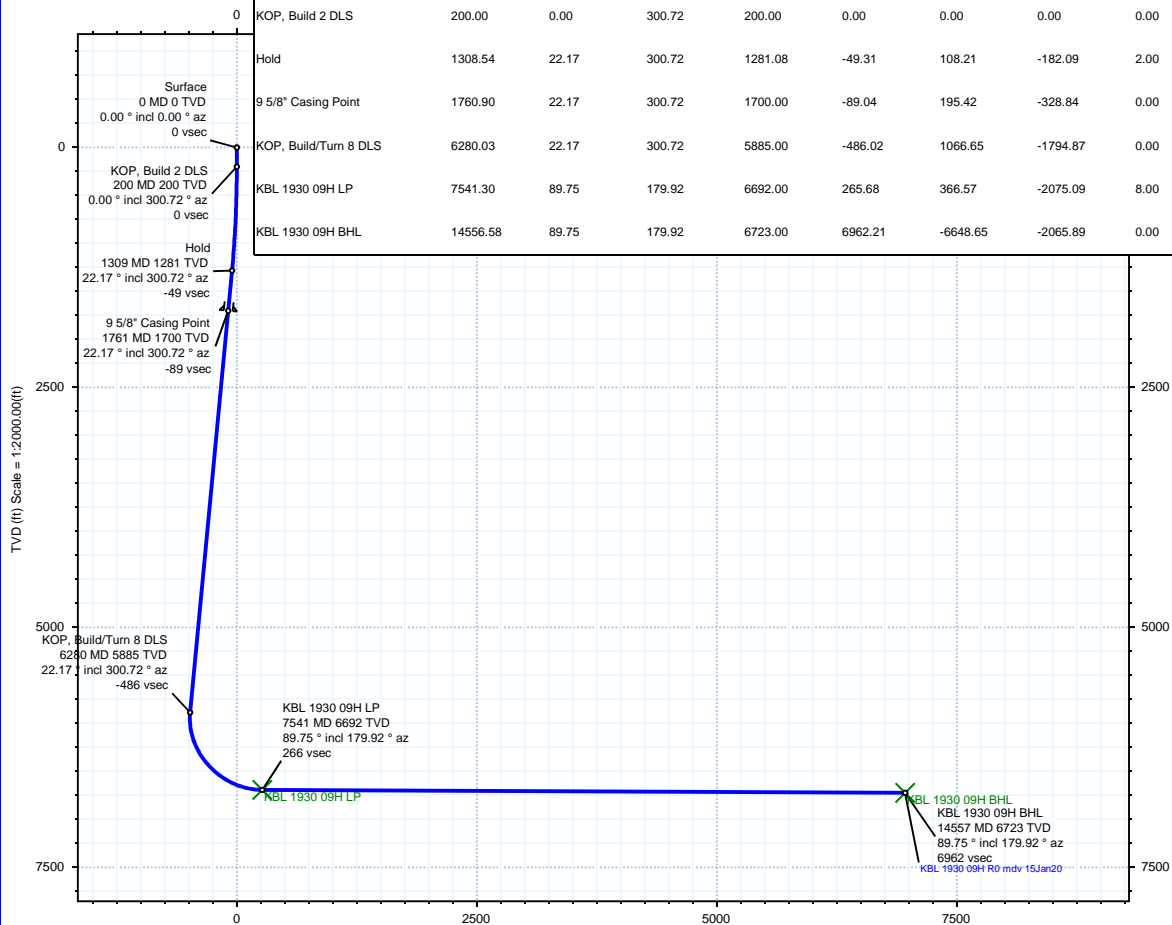
Rev 0

Borehole:	Well:	Field:	Structure:
Original Hole	KBL 1930 09H	CO, Weld County (NAD 83 NZ) - 2019	Verdad Resources 19-02N-63W (KBL 1930 Pad)

Gravity & Magnetic Parameters				Surface Location				Miscellaneous			
Model:	HDGM 2019	Dip:	66.493°	Date:	15-Jan-2020	Lat:	N 40 7 17.79	Northings:	1288791.78ftUS	Grid Conv:	0.6602°
MagDec:	8.08°	FS:	51998.823nT	Gravity FS:	999.019mgn (9.80665 Based)	Lon:	W 104 28 41.44	Easting:	3285750.59ftUS	Scale Fact:	0.99995937
								Slot:	KBL 1930 09H	TVD Ref:	KB 21ft(4881ft above MSL)
								Plan:	KBL 1930 09H R0 mdv 15Jan20		

Surface Location									
Northing: 1288791.78431693			Easting: 3285750.59467773		Latitude: N 40 7 17.79		Longitude: W 104 28 41.44		VSec Azimuth: 197.26
Target Description			Grid Coord				Local Coord		
Target Name	Latitude	Longitude	Northing	Easting	TVD	VSec	N(+)/S(-)	E(+)/W(-)	
KBL 1930 Pad Sec 19-30 460' SB	N 40 7 17.79	W 104 28 41.82	1288791.80	3285720.67	4881.00	8.53	0.36	-29.92	
KBL 1930 Pad Sec 19-30	N 40 7 17.79	W 104 28 41.82	1288791.80	3285720.67	4881.00	8.53	0.36	-29.92	
KBL 1930 Pad Sec 19 - Mid line	N 40 7 17.79	W 104 28 41.82	1288791.80	3285720.67	4881.00	8.53	0.36	-29.92	
KBL 1930 09H LP	N 40 7 21.41	W 104 29 8.15	1289134.40	3283671.51	6692.00	265.68	366.57	-2075.09	
KBL 1930 09H BHL	N 40 6 12.08	W 104 29 8.02	1282120.06	3283761.54	6723.00	6962.21	-6648.65	-2065.89	

Critical Points									
Critical Point	MD	INCL	AZIM	TVD	VSEC	N(+)/S(-)	E(+)/W(-)	DLS	
Surface	0.00	0.00	0.00	0.00	0.00	0.00	0.00		
KOP, Build 2 DLS	200.00	0.00	300.72	200.00	0.00	0.00	0.00		
Hold	1308.54	22.17	300.72	1281.08	-49.31	108.21	-182.09	2.00	
9 5/8" Casing Point	1760.90	22.17	300.72	1700.00	-89.04	195.42	-328.84	0.00	
KOP, Build/Turn 8 DLS	6280.03	22.17	300.72	5885.00	-486.02	1066.65	-1794.87	0.00	
KBL 1930 09H LP	7541.30	89.75	179.92	6692.00	265.68	366.57	-2075.09	8.00	
KBL 1930 09H BHL	14556.58	89.75	179.92	6723.00	6962.21	-6648.65	-2065.89	0.00	



Vertical Section (ft) Azim = 197.26° Scale = 1:2000.00(ft) Origin = 0N/-S, 0E/-W

Proposal



True North  
Tot Corr (M->T 8.080°)  
Mag Dec (8.080°)  
Grid Conv (0.660°)

EW (ft) Scale =

