



Well Services
E - L I N E

RADIAL BOND TOOL
GAMMA RAY
CCL

Company NOBLE ENERGY		Company NOBLE ENERGY	
Well DECHANT D31-18D		Well DECHANT D31-18D	
Field WATTENBERG		Field WATTENBERG	
County WELD		County WELD	
State CO		State CO	
Location: API # : 05-123-34170		Other Services	
SEC 31 TWP 3N RGE 64W		NW/SE	
Permanent Datum G.L.		Elevation 4811'	
Log Measured From KB 15'		K.B. 4826'	
Drilling Measured From KB		D.F. 4825'	
G.L. 4811'			
Date 2-11-2020	Run Number ONE		
Depth Driller 8084'	Depth Logger 1100'		
Bottom Logged Interval 1100'	Top Log Interval SURFACE		
Open Hole Size 7.875"	Type Fluid WATER		
Density / Viscosity 1.0	Max. Recorded Temp. 63		
Estimated Cement Top STRINGERS TO 334'?	Time Well Ready ON ARRIVAL		
Time Logger on Bottom NA	Equipment Number 4495		
Location GREELEY, CO	Recorded By A.STEERMAN		
Witnessed By D.RUSSELL			
Borehole Record		Tubing Record	
Run Number	Bit	From	To
		Size	Weight
		From	To
Casing Record	Size	Wgt/Ft	Top
Surface String	8.625"	23#	SURFACE
Prot. String			
Production String	4.5"	11.6#	SURFACE
Liner			8075'

<<< Fold Here >>>

All interpretations are opinions based on inferences from electrical or other measurements and we cannot and do not guarantee the accuracy or correctness of any interpretation, and we shall not, except in the case of gross or willful negligence on our part, be liable or responsible for any loss, costs, damages, or expenses incurred or sustained by anyone resulting from any interpretation made by any of our officers, agents or employees. These interpretations are also subject to our general terms and conditions set out in our current Price Schedule.

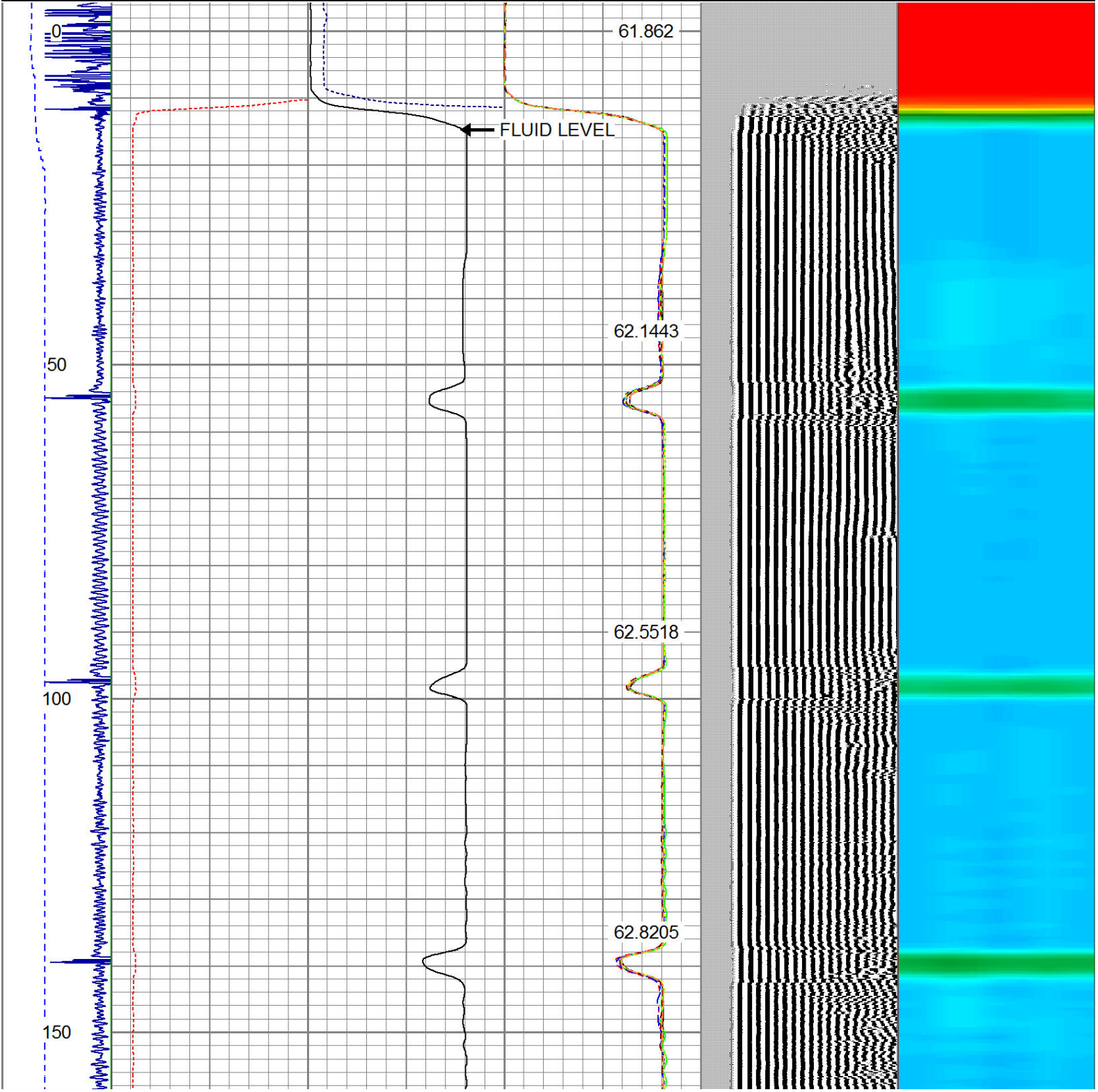
Comments

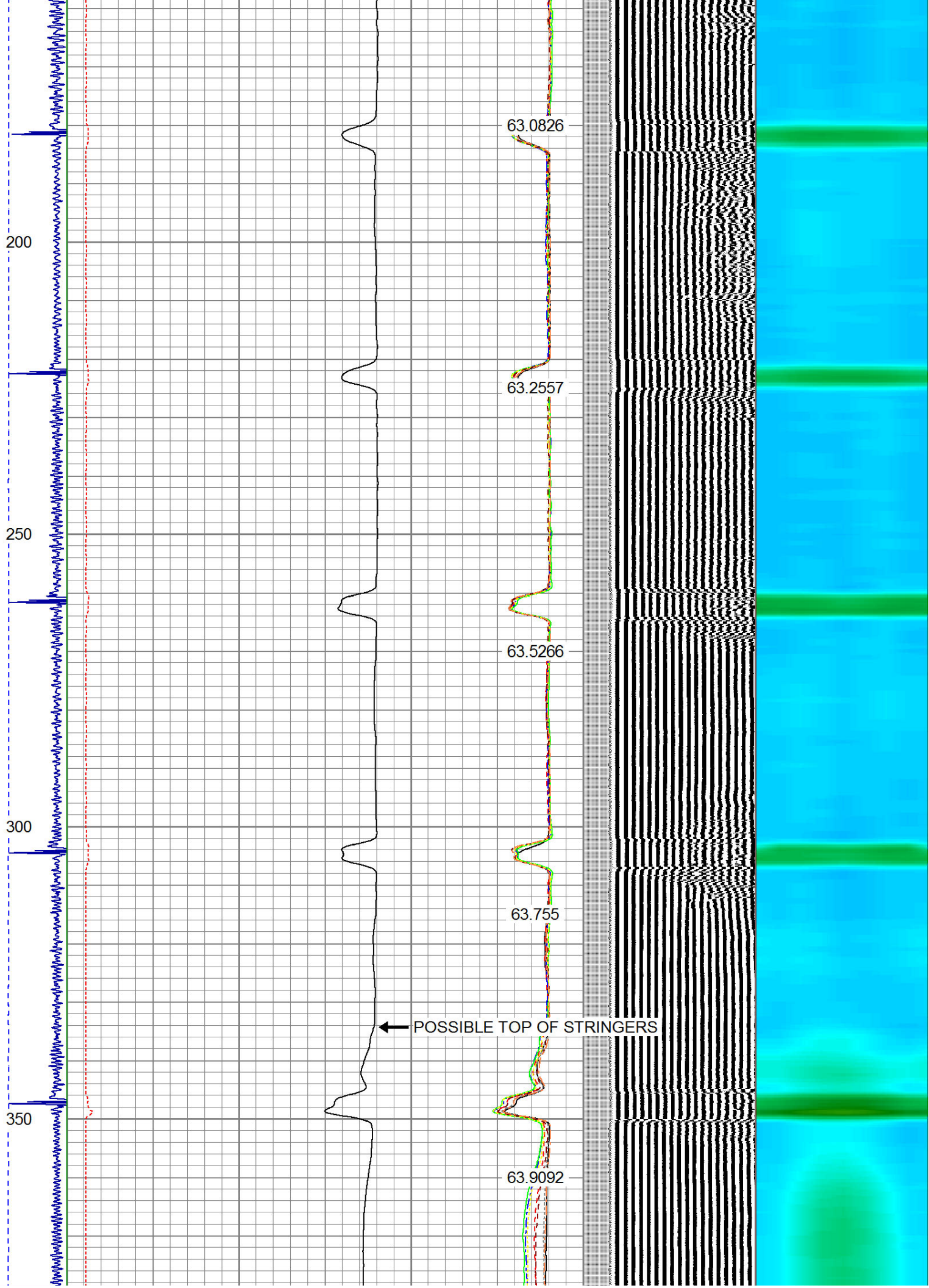
RAN CBL TO VERIFY CEMENT COVERAGE
CORRELATED TO K.B. OF 12'

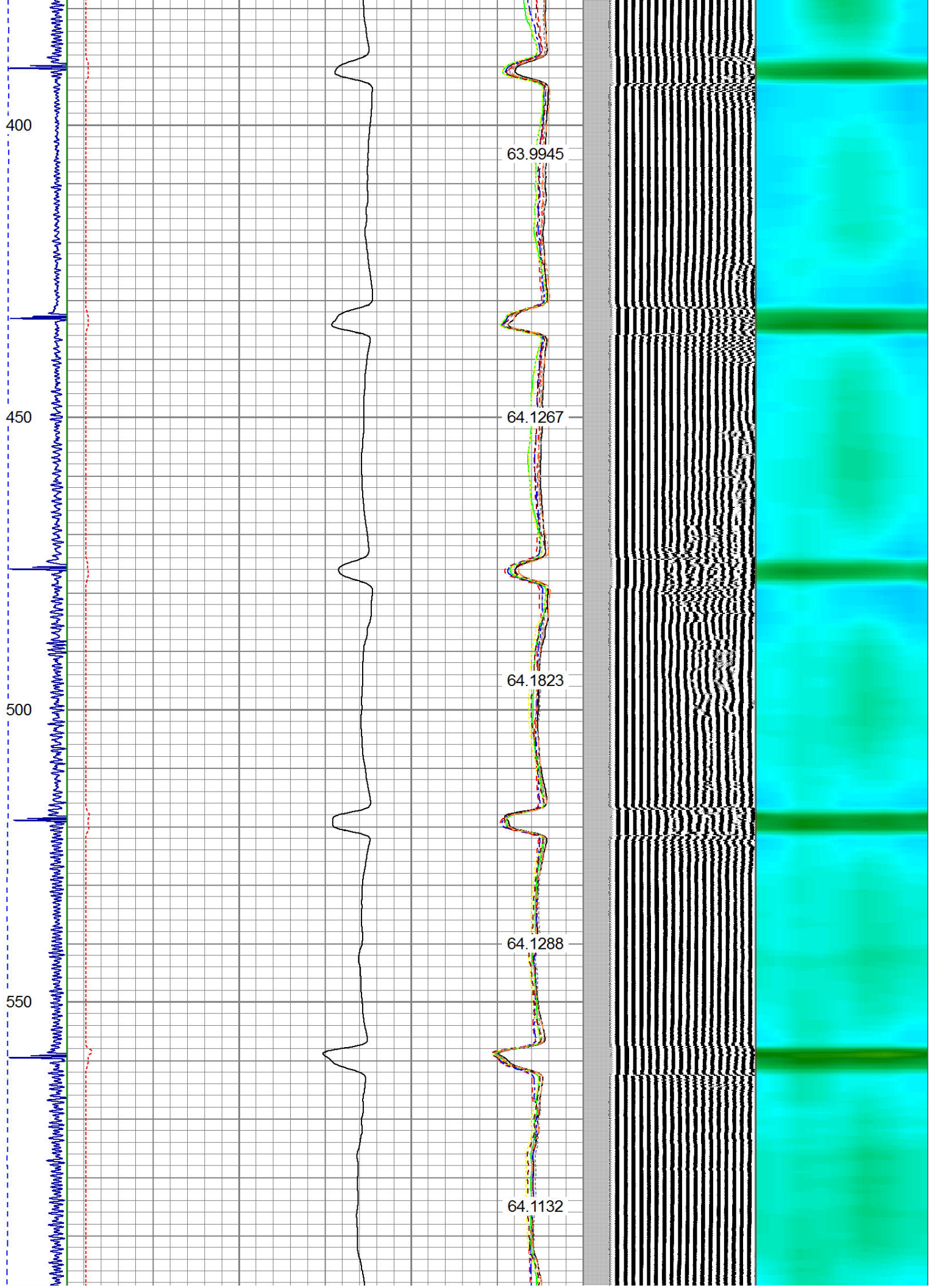
Sensor	Offset (ft)	Schematic	Description	Len (ft)	OD (in)	Wt (lb)
CENT	18.91					

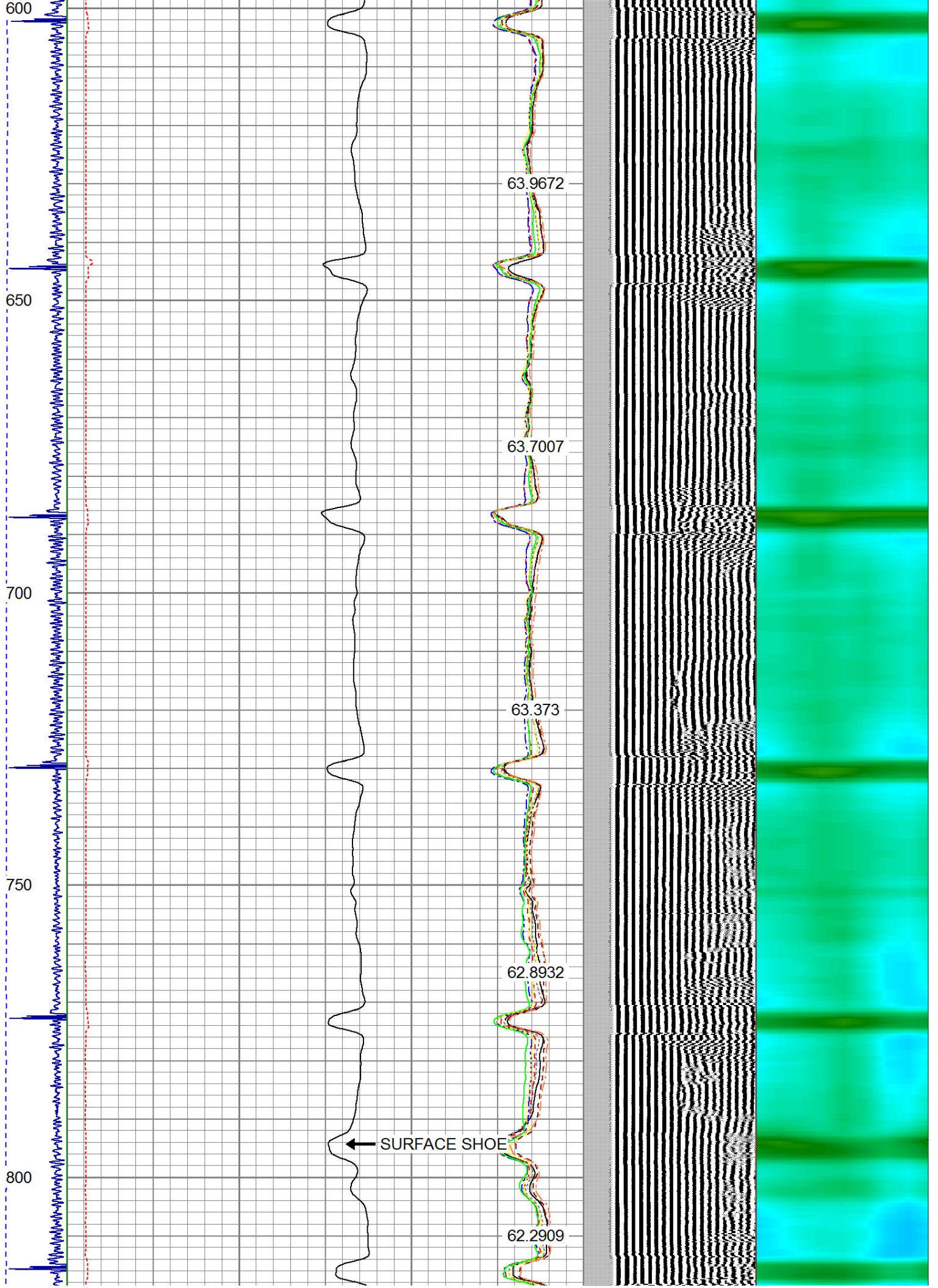
				PTS275	2.83	2.75	
HEADVOLT	16.08						
RBT	16.08						
IntTemp	14.66						
WVFS3FT	11.41						
WVFCAL	11.41						
WVFS1	11.41						
WVFS2	11.41						
WVFS3	11.41						
WVFS4	11.41						
WVFS5	11.41						
WVFS6	11.41						
WVFS7	11.41						
WVFS8	11.41						
WVFS5FT	10.41						
CNLSC	6.00						
CNSSC	5.17						
GR	4.33						
CCL	3.64						
GR	0.90						
		</					

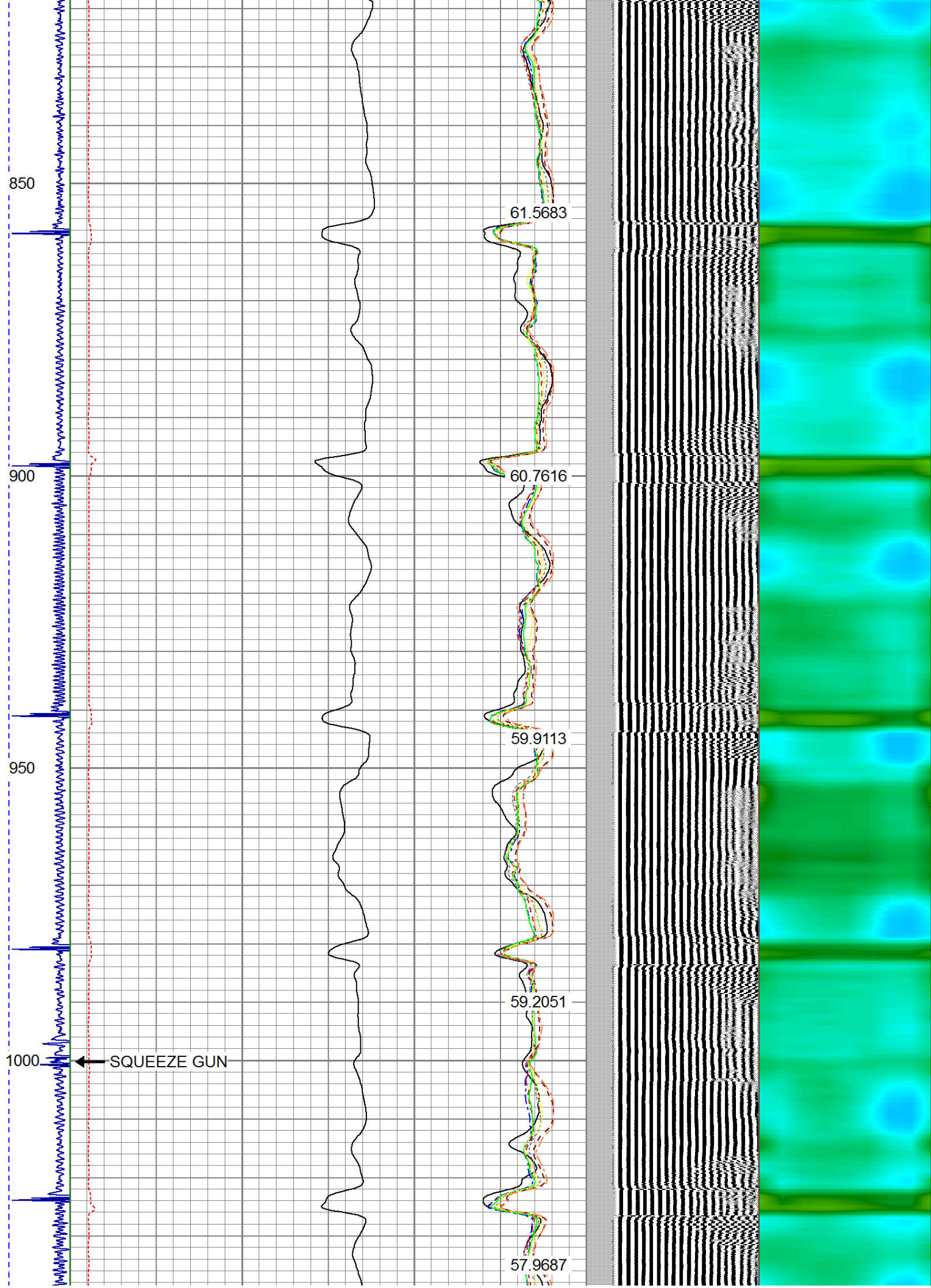
-9	CCL	1	200	TT (usec)	800	0	AMP (mV)	100	0	AMPS1	100	200	VDL	1200	1	Cement Map	8
LSPD			0	GR (cps)	200	0	AMPx5 (mV)	20	0	AMPS2	100				1		100
(ft/min)			200	GR (cps)	400				0	AMPS3	100						
0		250							0	AMPS4	100						
									0	AMPS5	100						
									0	AMPS6	100						
									0	AMPS7	100						
									0	AMPS8	100						
										IntTemp							
										(degF)							

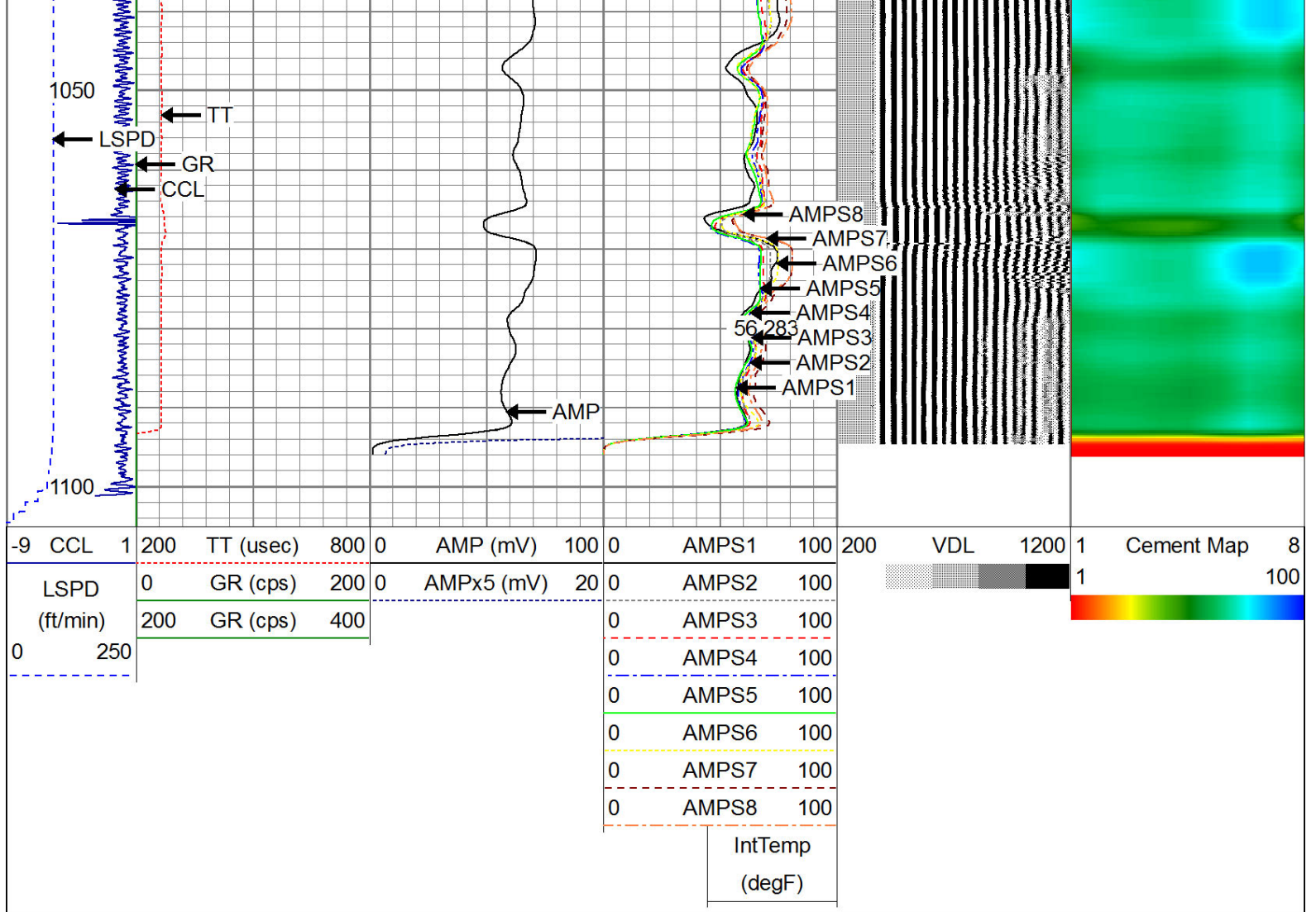












Well Services
E - LINE

Company NOBLE ENERGY
Well DECHANT D31-18D
Field WATTENBERG
County WELD
State CO