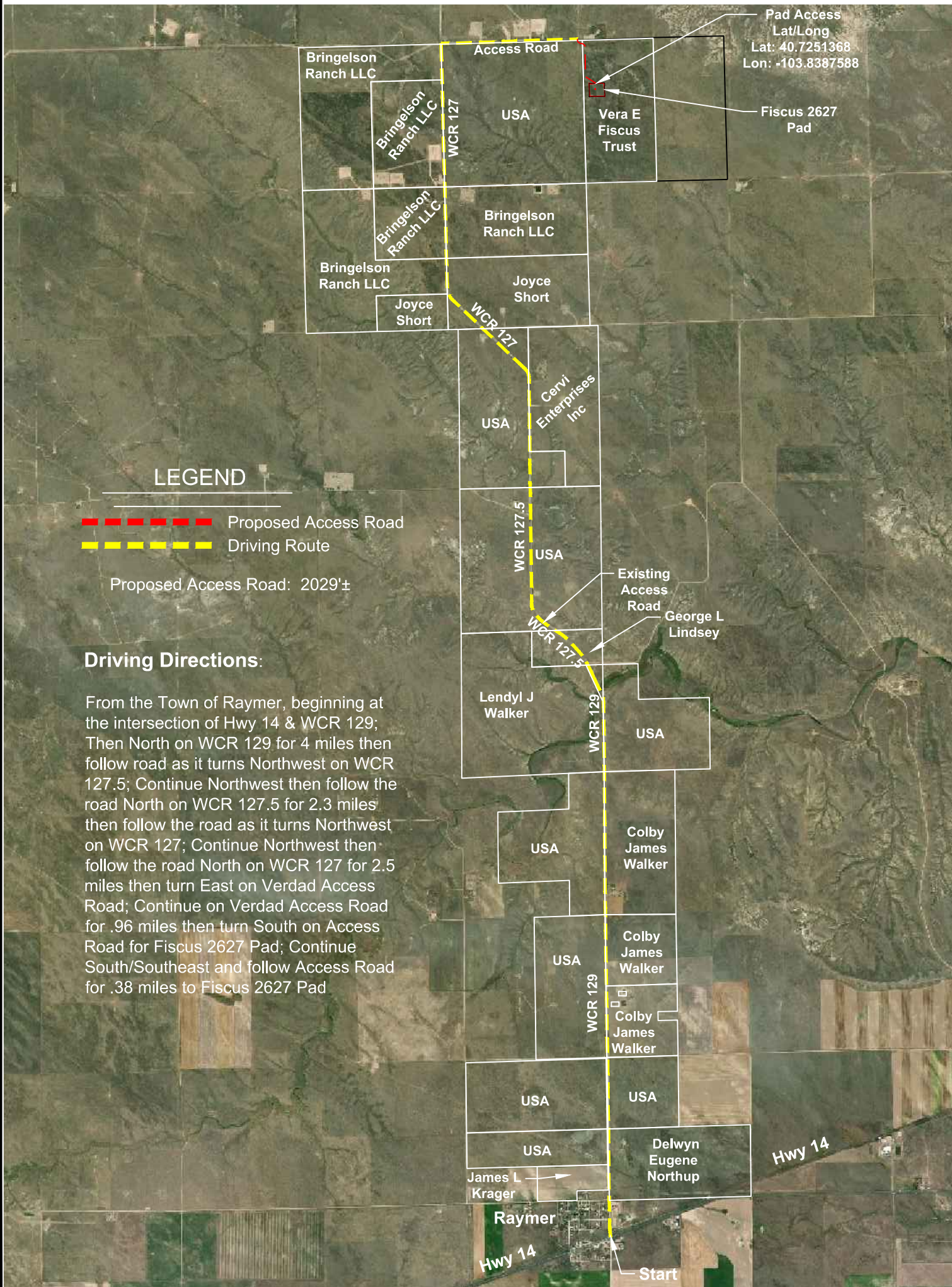


ACCESS ROAD MAP
 SW 1/4 NW 1/4 SECTION 26
 T9N R58W 6TH PM
 WELD COUNTY, COLORADO



SCALE: 1" = 4500'
 0' 2250' 4500'



LEGEND

- - - - - Proposed Access Road
- - - - - Driving Route

Proposed Access Road: 2029'±

Driving Directions:

From the Town of Raymer, beginning at the intersection of Hwy 14 & WCR 129; Then North on WCR 129 for 4 miles then follow road as it turns Northwest on WCR 127.5; Continue Northwest then follow the road North on WCR 127.5 for 2.3 miles then follow the road as it turns Northwest on WCR 127; Continue Northwest then follow the road North on WCR 127 for 2.5 miles then turn East on Verdad Access Road; Continue on Verdad Access Road for .96 miles then turn South on Access Road for Fiscus 2627 Pad; Continue South/Southeast and follow Access Road for .38 miles to Fiscus 2627 Pad

VERDAD RESOURCES
FISCUS 2627
JOB NO. 126444

MAPP	6/4/2019	REVISION:	
SHEET :	1 OF 1	INT	DATE
FILE:F2A_FISCUS_2627_ACCESS_ROAD_MAP			

NOTE
 This is not a land survey
 nor land survey plat.

