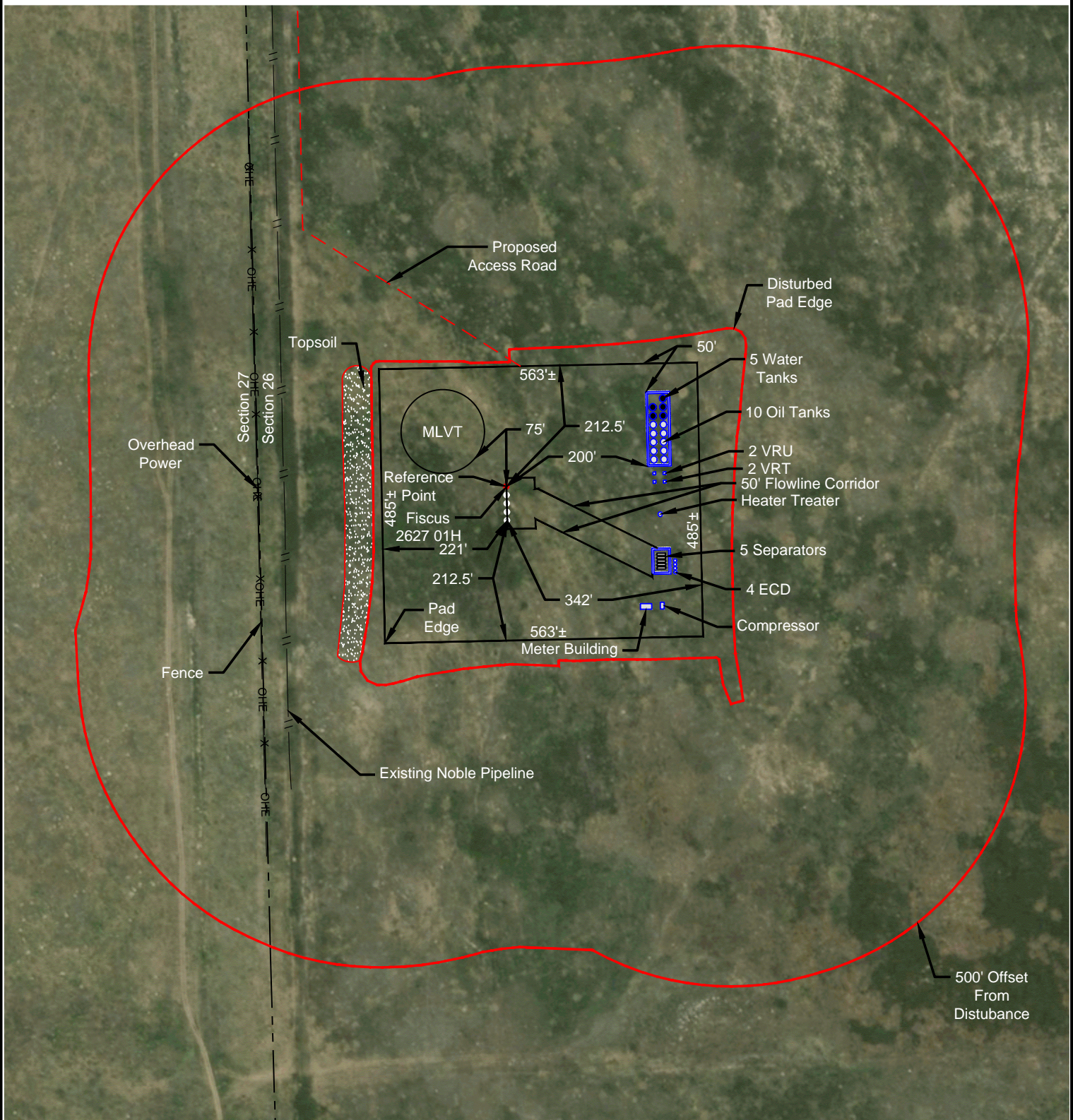
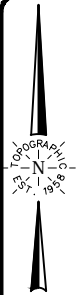


LOCATION DRAWING
 SW 1/4 NW 1/4 SECTION 26
 T9N R58W 6TH PM
 WELD COUNTY, COLORADO



SCALE: 1" = 240'
 0' 120' 240'



LAND USE:
 NON-CROP LAND-RANGELAND
 NOXIOUS WEEDS: NO
 PAD DISTURBANCE ACREAGE:
 8.97 ± DRILLING OPERATIONS
 6.1 ± POST-INTERIM RECLAMATION

Cultural Distances:	From Closest Well	From Production Facility Equipment
Property Line	W 439'±	W 671'± (Meter Building)
Public Road CR 127	5280'±	5280'±
Building Unit	5280'±	5280'±
Building	5280'±	5280'±
Railroad	5280'±	5280'±
Above Ground Utility	W 441'±	W 673'± (Meter Building)
Water Well	5280'±	5280'±
School Facility	5280'±	5280'±
School Property Line	5280'±	5280'±
Child Care/Day Care	5280'±	5280'±

REFERENCE POINT
Latitude: 40.7245534
Longitude: -103.8388638
Footage: 1833' FNL 439' FWL
Ground Elevations: 4775.3'
PDOP: 1.2 Date: 09/27/2016
Instrument Operator: Eric Purcell

VERDAD RESOURCES FISCUS 2627 JOB NO. 126444	MAPP	2/10/2020	REVISION:	
	SHEET :	1 OF 1	INT	DATE
	FILE:	F2A_FISCUS_2627_LOCATION_DRAWING_REV1		

NOTE
 This is not a land survey
 nor land survey plat.

