



# Verdad Resources LLC

Schlumberger

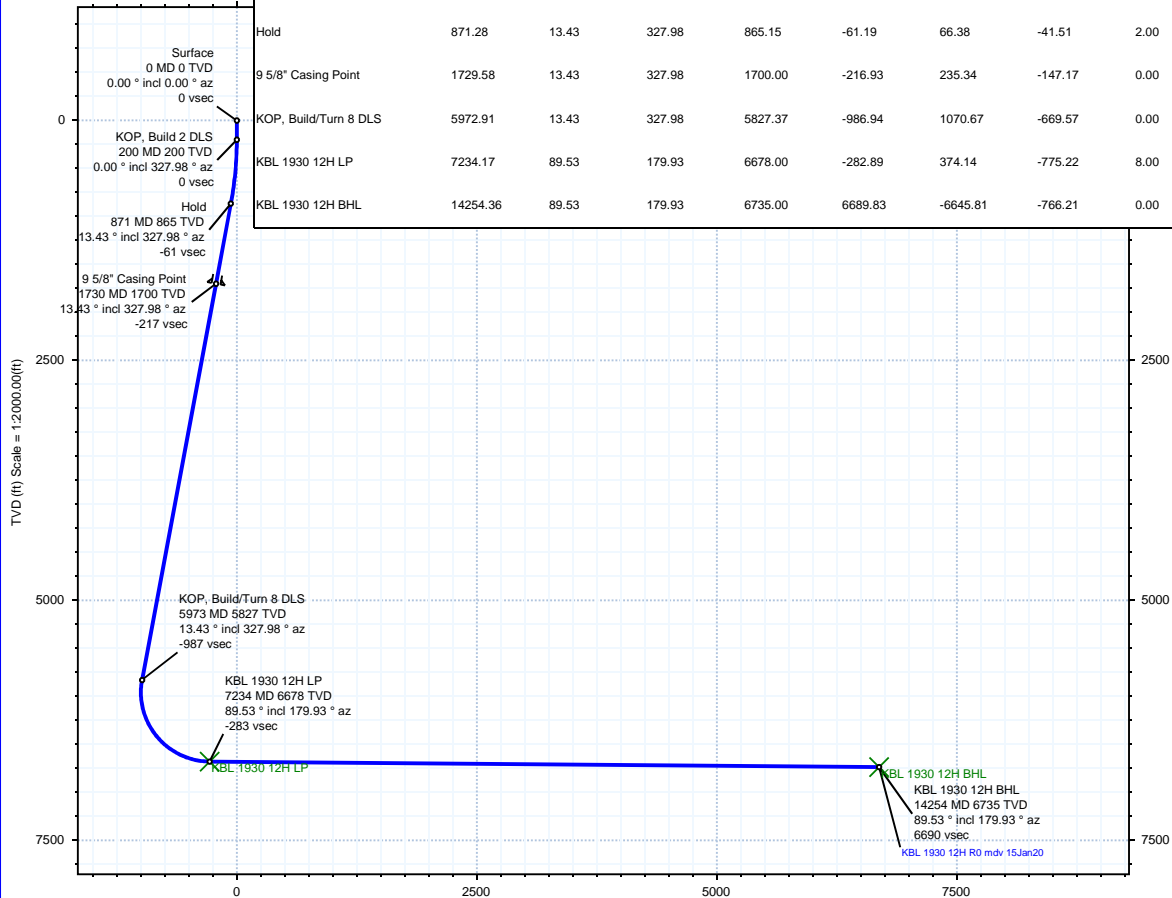
Rev 0

Borehole:	Well:	Field:	Structure:
Original Hole	KBL 1930 12H	CO, Weld County (NAD 83 NZ) - 2019	Verdad Resources 19-02N-63W (KBL 1930 Pad)

Gravity & Magnetic Parameters	Surface Location	NAD83 Colorado State Plane, Northern Zone, US Feet	Miscellaneous
Model: HDGM 2019	Lat: N 40 7 17.78	Northings: 1288791.771US	Slot: KBL 1930 12H
Dip: 66.493°	Lon: W 104 28 41.05	Eastings: 3285780.811US	TVD Ref: KBL 21ft(4881ft above MSL)
Date: 15-Jan-2020		Scale Fact: 0.99995937	Plan: KBL 1930 12H R0 mdv 15Jan20
MagDec: 8.08°			
FS: 51998.85nT			
Gravity FS: 999.019mgn (9.80665 Based)			

Surface Location								
Northing: 1288791.76810557			Easting: 3285780.79950545		Latitude: N 40 7 17.78		Longitude: W 104 28 41.05	
						VSec Azimuth: 186.58		
Target Description		Grid Coord					Local Coord	
Target Name	Latitude	Longitude	Northing	Easting	TVD	VSec	N(+)/S(-)	E(+)/W(-)
KBL 1930 Pad Sec 19-30 460' SB	N 40 7 17.79	W 104 28 41.82	1288791.80	3285720.67	4881.00	6.16	0.73	-60.13
KBL 1930 Pad Sec 19-30	N 40 7 17.79	W 104 28 41.82	1288791.80	3285720.67	4881.00	6.16	0.73	-60.13
KBL 1930 Pad Sec 19 - Mid line	N 40 7 17.79	W 104 28 41.82	1288791.80	3285720.67	4881.00	6.16	0.73	-60.13
KBL 1930 12H LP	N 40 7 21.48	W 104 28 51.03	1289156.94	3285001.35	6678.00	-282.89	374.14	-775.22
KBL 1930 12H BHL	N 40 6 12.11	W 104 28 50.91	1282137.86	3285091.26	6735.00	6689.83	-6645.81	-766.21

Critical Points								
Critical Point	MD	INCL	AZIM	TVD	VSEC	N(+)/S(-)	E(+)/W(-)	DLS
Surface	0.00	0.00	0.00	0.00	0.00	0.00	0.00	
KOP, Build 2 DLS	200.00	0.00	327.98	200.00	0.00	0.00	0.00	0.00
Hold	871.28	13.43	327.98	865.15	-61.19	66.38	-41.51	2.00
9 5/8" Casing Point	1729.58	13.43	327.98	1700.00	-216.93	235.34	-147.17	0.00
KOP, Build/Turn 8 DLS	5972.91	13.43	327.98	5827.37	-986.94	1070.67	-669.57	0.00
KBL 1930 12H LP	7234.17	89.53	179.93	6678.00	-282.89	374.14	-775.22	8.00
KBL 1930 12H BHL	14254.36	89.53	179.93	6735.00	6689.83	-6645.81	-766.21	0.00



Vertical Section (ft) Azim = 186.56° Scale = 1:2000.00(ft) Origin = 0N/-S, 0E/-W

Proposal



True North  
Tot Corr (M->T 8.080°)  
Mag Dec (8.080°)  
Grid Conv (0.660°)

EW (ft) Scale =

