



# Verdad Resources LLC



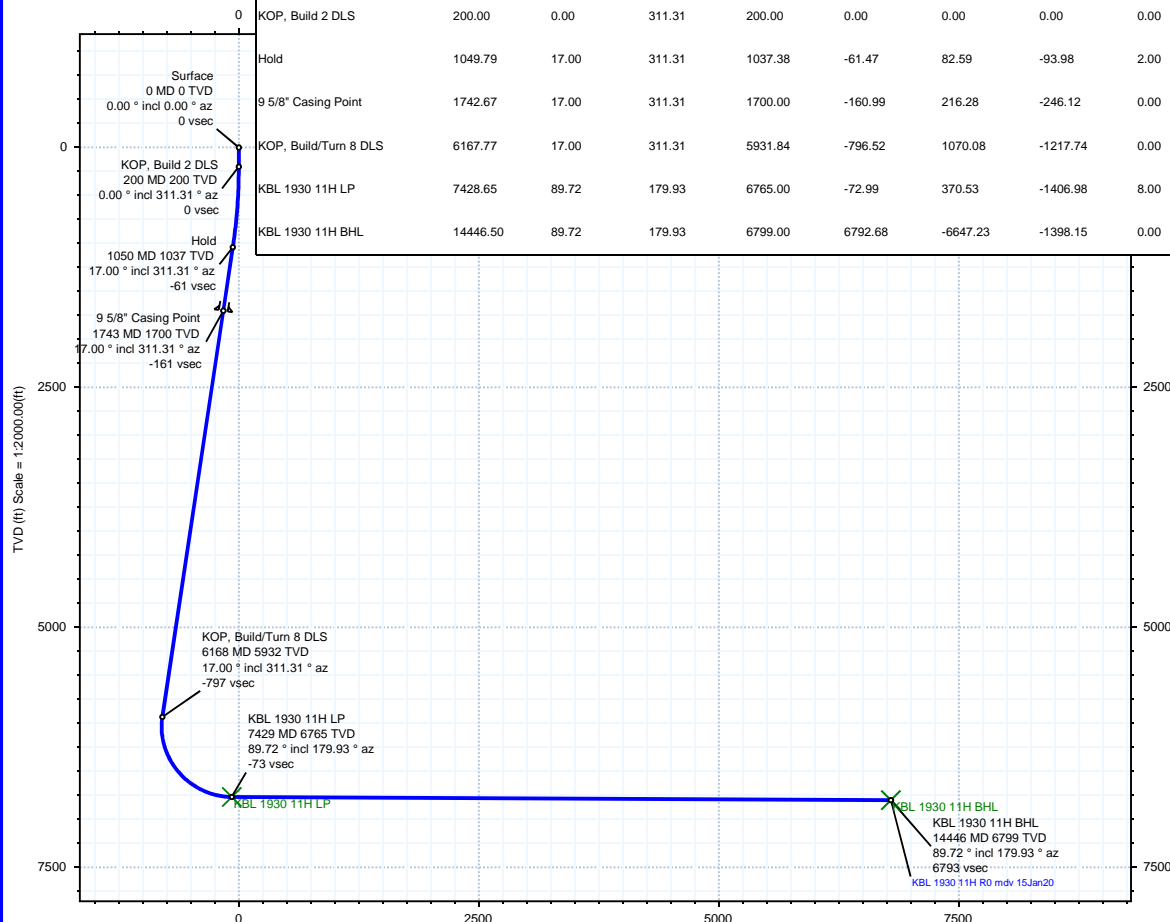
Rev 0

Borehole:	Well:	Field:	Structure:
Original Hole	KBL 1930 11H	CO, Weld County (NAD 83 NZ) - 2019	Verdad Resources 19-02N-63W (KBL 1930 Pad)

Gravity & Magnetic Parameters				Surface Location				Miscellaneous			
Model:	HDGM 2019	Dip:	66.493°	Date:	15-Jan-2020	Lat:	N 40 7 17.78	Northings:	1288791.59ftUS	Grid Conv:	0.6603°
MagDec:	8.08°	FS:	51998.836nT	Gravity FS:	999.019mgn (9.80665 Based)	Lon:	W 104 28 41.24	Easting:	3285765.7ftUS	Scale Fact:	0.99995937
								Slot:	KBL 1930 11H	TVD Ref:	KB 21ft(4881ft above MSL)
								Plan:	KBL 1930 11H R0 mdy 15Jan20		

Surface Location																			
Northing:		1288791.59407925		Easting:		3285765.69919044		Latitude:		N 40 7 17.78		Longitude:		W 104 28 41.24		VSec Azimuth:		191.88	
Target Description				Grid Coord								Local Coord							
Target Name				Latitude		Longitude		Northing		Easting		TVD		VSec		N(+)/S(-)		E(+)/W(-)	
KBL 1930 Pad Sec 19-30 460' SB				N 40 7 17.79		W 104 28 41.82		1288791.80		3285720.67		4881.00		8.55		0.73		-45.03	
KBL 1930 Pad Sec 19-30				N 40 7 17.79		W 104 28 41.82		1288791.80		3285720.67		4881.00		8.55		0.73		-45.03	
KBL 1930 Pad Sec 19 - Mid line				N 40 7 17.79		W 104 28 41.82		1288791.80		3285720.67		4881.00		8.55		0.73		-45.03	
KBL 1930 11H LP				N 40 7 21.44		W 104 28 59.35		1289145.87		3284354.60		6765.00		-72.99		370.53		-1406.98	
KBL 1930 11H BHL				N 40 6 12.09		W 104 28 59.24		1282128.97		3284444.30		6799.00		6792.68		-6647.23		-1398.15	

Critical Points									
Critical Point	MD	INCL	AZIM	TVD	VSEC	N(+)/S(-)	E(+)/W(-)	DLS	
Surface	0.00	0.00	0.00	0.00	0.00	0.00	0.00		
KOP, Build 2 DLS	200.00	0.00	311.31	200.00	0.00	0.00	0.00	0.00	
Hold	1049.79	17.00	311.31	1037.38	-61.47	82.59	-93.98	2.00	
9 5/8" Casing Point	1742.67	17.00	311.31	1700.00	-160.99	216.28	-246.12	0.00	
KOP, Build/Turn 8 DLS	6167.77	17.00	311.31	5931.84	-796.52	1070.08	-1217.74	0.00	
KBL 1930 11H LP	7428.65	89.72	179.93	6765.00	-72.99	370.53	-1406.98	8.00	
KBL 1930 11H BHL	14446.50	89.72	179.93	6799.00	6792.68	-6647.23	-1398.15	0.00	



Vertical Section (ft) Azim = 191.88° Scale = 1:2000.00(ft) Origin = 0N/-S, 0E/-W

Proposal



True North  
Tot Corr (M->T 8.080°)  
Mag Dec (8.080°)  
Grid Conv (0.660°)

EW (ft) Scale =

