



Verdad Resources LLC



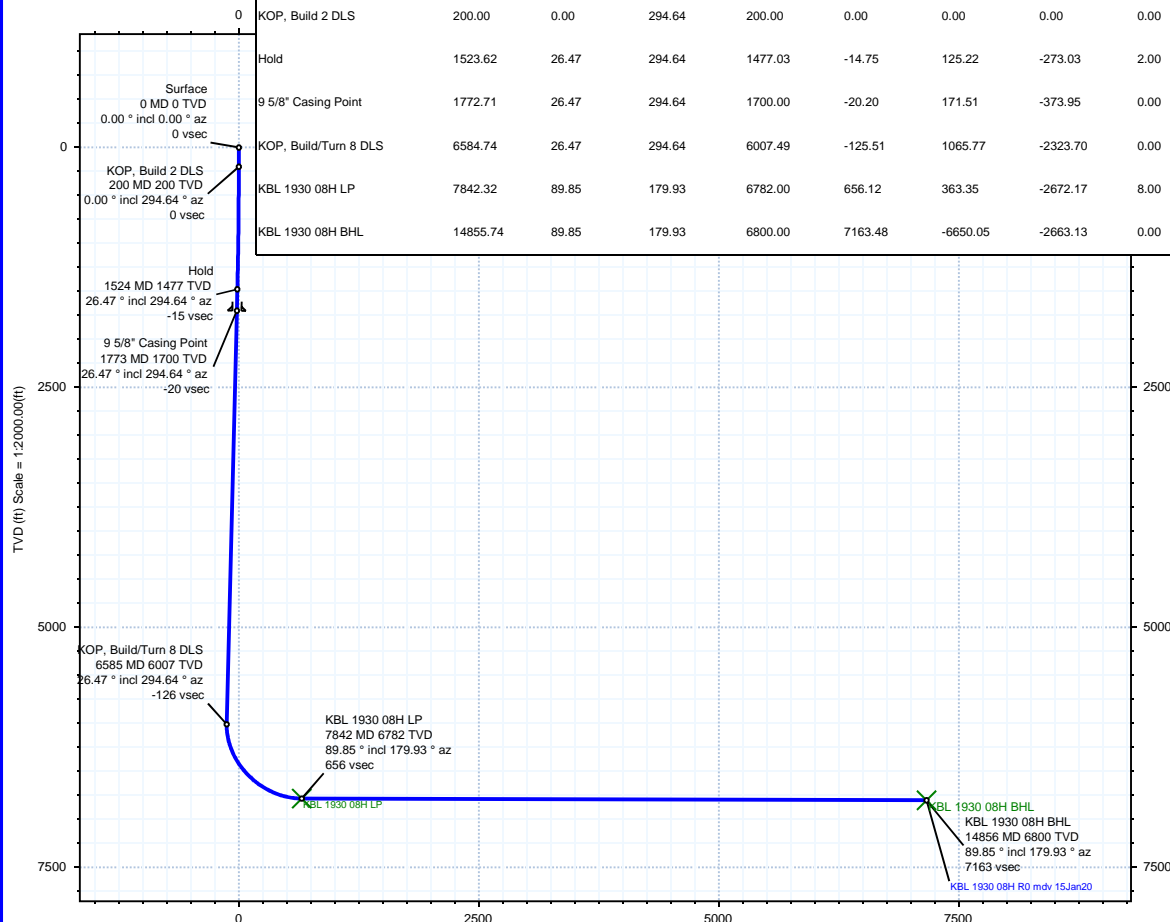
Rev 0

Borehole:	Well:	Field:	Structure:
Original Hole	KBL 1930 08H	CO, Weld County (NAD 83 NZ) - 2019	Verdad Resources 19-02N-63W (KBL 1930 Pad)

Gravity & Magnetic Parameters				Surface Location				Miscellaneous			
Model:	HDGM 2019	Dip:	66.493°	Date:	15-Jan-2020	Lat:	N 40 7 17.79	Northings:	1288791.61ftUS	Grid Conv:	0.6602°
MagDec:	8.08°	FS:	51998.809nT	Gravity FS:	999.019mgn (9.80665 Based)	Lon:	W 104 28 41.63	Easting:	3285735.77ftUS	Scale Fact:	0.99995937
								Slot:	KBL 1930 08H	TVD Ref:	KB 21ft(4881ft above MSL)
								Plan:	KBL 1930 08H R0 mdv 15Jan20		

Surface Location											
Northing: 1288791.6135313			Easting: 3285735.7739982			Latitude: N 40 7 17.79			Longitude: W 104 28 41.63		
						VSec Azimuth: 201.82					
Target Description			Grid Coord						Local Coord		
Target Name			Latitude	Longitude	Northing	Easting	TVD	VSec	N(+)/S(-)	E(+)/W(-)	
KBL 1930 Pad Sec 19-30 460' SB			N 40 7 17.79	W 104 28 41.82	1288791.80	3285720.67	4881.00	5.28	0.36	-15.10	
KBL 1930 Pad Sec 19-30			N 40 7 17.79	W 104 28 41.82	1288791.80	3285720.67	4881.00	5.28	0.36	-15.10	
KBL 1930 Pad Sec 19 - Mid line			N 40 7 17.79	W 104 28 41.82	1288791.80	3285720.67	4881.00	5.28	0.36	-15.10	
KBL 1930 08H LP			N 40 7 21.37	W 104 29 16.03	1289124.13	3283059.71	6782.00	656.12	363.35	-2672.17	
KBL 1930 08H BHL			N 40 6 12.07	W 104 29 15.90	1282111.61	3283149.55	6800.00	7163.48	-6650.05	-2663.13	

Critical Points									
Critical Point	MD	INCL	AZIM	TVD	VSEC	N(+)/S(-)	E(+)/W(-)	DLS	
Surface	0.00	0.00	0.00	0.00	0.00	0.00	0.00		
KOP, Build 2 DLS	200.00	0.00	294.64	200.00	0.00	0.00	0.00	0.00	
Hold	1523.62	26.47	294.64	1477.03	-14.75	125.22	-273.03	2.00	
9 5/8" Casing Point	1772.71	26.47	294.64	1700.00	-20.20	171.51	-373.95	0.00	
KOP, Build/Turn 8 DLS	6584.74	26.47	294.64	6007.49	-125.51	1065.77	-2323.70	0.00	
KBL 1930 08H LP	7842.32	89.85	179.93	6782.00	656.12	363.35	-2672.17	8.00	
KBL 1930 08H BHL	14855.74	89.85	179.93	6800.00	7163.48	-6650.05	-2663.13	0.00	



Vertical Section (ft) Azim = 201.82° Scale = 1:2000.00(ft) Origin = 0N/-S, 0E/-W

Proposal



True North
Tot Corr (M->T 8.080°)
Mag Dec (8.080°)
Grid Conv (0.660°)

EW (ft) Scale =

