



Verdad Resources LLC



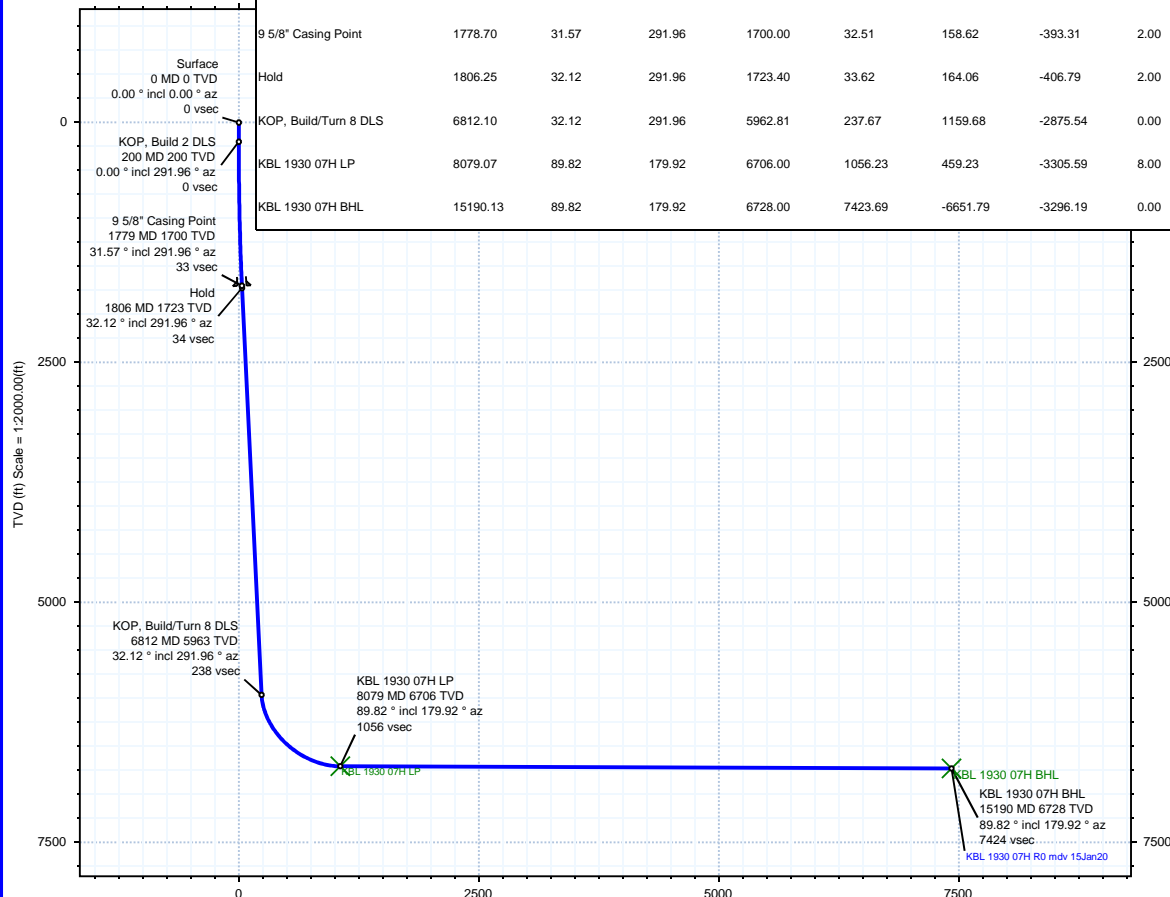
Rev 0

Borehole:	Well:	Field:	Structure:
Original Hole	KBL 1930 07H	CO, Weld County (NAD 83 NZ) - 2019	Verdad Resources 19-02N-63W (KBL 1930 Pad)

Gravity & Magnetic Parameters				Surface Location				Miscellaneous			
Model:	HDGM 2019	Dip:	66.493°	Date:	15-Jan-2020	Lat:	N 40 7 17.79	Northing:	1288791.8ftUS	Grid Conv:	0.6602°
MagDec:	8.08°	FS:	51998.796Nt	Gravity FS:	999.019mgn (9.80665 Based)	Lon:	W 104 28 41.82	Easting:	3285720.67ftUS	Scale Fact:	0.99995937
								Slot:	KBL 1930 07H	TVD Ref:	KB 21ft(4881ft above MSL)
								Plan:	KBL 1930 07H R0 mdv 15Jan20		

Surface Location													
Northing: 1288791.80378721			Easting: 3285720.66948594			Latitude: N 40 7 17.79			Longitude: W 104 28 41.82			VSec Azimuth: 206.36	
Target Description				Grid Coord				Local Coord					
Target Name		Latitude	Longitude	Northing	Easting	TVD	VSec	N(+)/S(-)		E(+)/W(-)			
KBL 1930 Pad Sec 19-30 460' SB		N 40 7 17.79	W 104 28 41.82	1288791.80	3285720.67	4881.00	0.00	0.00		0.00			
KBL 1930 Pad Sec 19-30		N 40 7 17.79	W 104 28 41.82	1288791.80	3285720.67	4881.00	0.00	0.00		0.00			
KBL 1930 Pad Sec 19 - Mid line		N 40 7 17.79	W 104 28 41.82	1288791.80	3285720.67	4881.00	0.00	0.00		0.00			
KBL 1930 07H LP		N 40 7 22.32	W 104 29 24.37	1289212.90	3282410.15	6706.00	1056.23	459.23		-3305.59			
KBL 1930 07H BHL		N 40 6 12.05	W 104 29 24.24	1282102.76	3282501.48	6728.00	7423.69	-6651.79		-3296.19			

Critical Points									
Critical Point	MD	INCL	AZIM	TVD	VSEC	N(+)/S(-)	E(+)/W(-)	DLS	
Surface	0.00	0.00	0.00	0.00	0.00	0.00	0.00		
KOP, Build 2 DLS	200.00	0.00	291.96	200.00	0.00	0.00	0.00		
9 5/8" Casing Point	1778.70	31.57	291.96	1700.00	32.51	158.62	-393.31	2.00	
Hold	1806.25	32.12	291.96	1723.40	33.62	164.06	-406.79	2.00	
KOP, Build/Turn 8 DLS	6812.10	32.12	291.96	5962.81	237.67	1159.68	-2875.54	0.00	
KBL 1930 07H LP	8079.07	89.82	179.92	6706.00	1056.23	459.23	-3305.59	8.00	
KBL 1930 07H BHL	15190.13	89.82	179.92	6728.00	7423.69	-6651.79	-3296.19	0.00	



Vertical Section (ft) Azim = 206.36° Scale = 1:2000.00(ft) Origin = 0N/S, 0E/W

Proposal



True North
Tot Corr (M->T 8.080°)
Mag Dec (8.080°)
Grid Conv (0.660°)

EW (ft) Scale =

