



July 16, 2019

VIA ELECTRONIC TRANSMITTAL

Department of Natural Resources  
Oil and Gas Conservation Commission  
The Chancery Building  
Attn: Jeff Robbins, Director  
1120 Lincoln St., Suite 801  
Denver, CO 80203

Re: **30-Day Certification Letter – Rule 318A.e**

<u>Well Name</u>	<u>Well Head Location (SHL)</u>			
<b>KBL 1930-07H</b>	1806	FSL	2081	FEL

Dear COGCC Director,

Verdad Resources LLC (Verdad) hereby certifies to the Director that that a thirty (30-day) notice has been given by certified mail to all owners in the proposed 560-acre wellbore spacing unit. The proposed 560-acre wellbore spacing unit for the KBL 1930-07H well consists of:

**Township 2N, Range 63W:**  
Section 19: W2SW4, SWNW  
Section 30: W2W2

**Township 2N, Range 64W:**  
Section 24: E2SE4, SENE  
Section 25: E2E2

We have not received any objections to such well location or proposed spacing unit, there Verdad hereby requests the Director to approve the proposed well.

If you should have any questions or concerns regarding this permit, please contact the undersigned at 720-845-6909.

Sincerely,

A handwritten signature in black ink that reads "Allison Schieber".

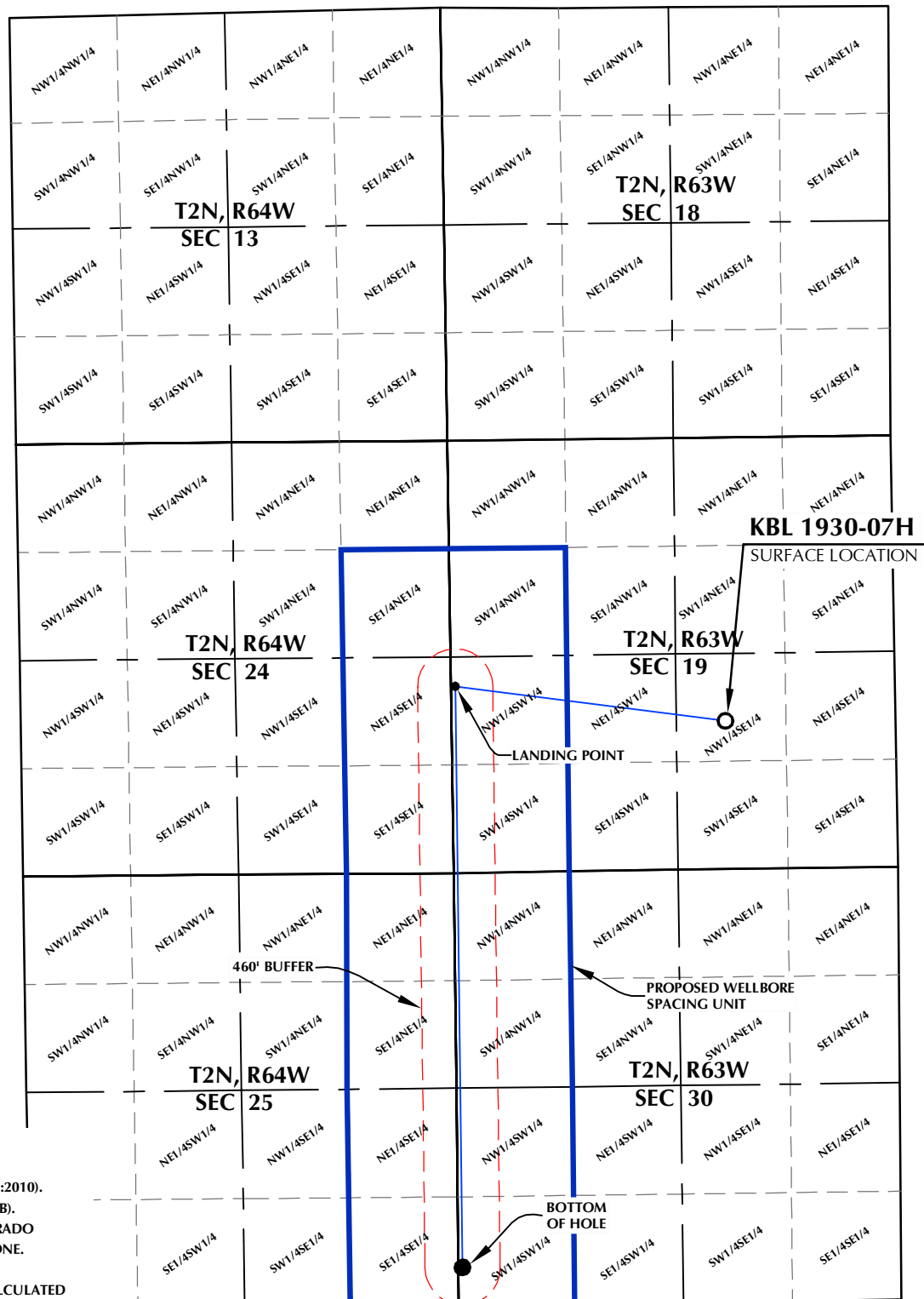
Allison Schieber  
Sr. Regulatory Analyst  
Verdad Oil and Gas Corporation

**SURFACE LOCATION**  
 GROUND ELEVATION= 4862.7'  
 LATITUDE= 40.121608°  
 LONGITUDE= -104.478284°  
 1/4 1/4: NW1/4 SE1/4

**LANDING POINT**  
 LATITUDE= 40.122868°  
 LONGITUDE= -104.490104°  
 1/4 1/4: NW1/4 SW1/4

**BOTTOM HOLE LOCATION**  
 LATITUDE= 40.103348°  
 LONGITUDE= -104.490067°  
 1/4 1/4: SW1/4 SW1/4

# KBL 1930-07H WELLBORE SPACING UNIT



## NOTES:

1. DRAWING LATITUDE AND LONGITUDE COORDINATES ARE NAD 83 (2011)(EPOCH:2010).
2. ELEVATION BASED ON NAVD88 (GEOID12B).
3. BASIS OF BEARING DERIVED FROM COLORADO COORDINATE SYSTEM OF 1983 NORTH ZONE.
4. ALL MEASURED DISTANCES ARE GRID.  
 COMBINED SCALE FACTOR: .99972908 CALCULATED FROM THE NE. CORNER OF SECTION 19, T2N, R63W.

## WELL PAD - KBL 02N-63W-19

KBL 1930-07H  
 WELLBORE SPACING UNIT  
 1806' FSL & 2081' FEL NWSE (SURFACE)  
 2280' FSL & 50' FWL LOT 2 (NWSW) (LANDING POINT)  
 LOCATED IN SECTION 19  
 460' FSL & 50' FWL LOT 2 (SWSW) (BOTTOM)  
 LOCATED IN SECTION 30  
 T2N, R63W, 6TH P.M.  
 WELD COUNTY, COLORADO



5950 Cedar Springs Road, Suite 200  
 Dallas, Texas 75235



## CONSULTING, LLC

**SHERIDAN OFFICE**  
 1095 Saberton Avenue  
 Sheridan, Wyoming 82801  
 Phone 307-674-0609

**LOVELAND OFFICE**  
 6706 North Franklin Avenue  
 Loveland, Colorado 80538  
 Phone 970-776-4331

DRAFTED BY:	LMO	CHECKED BY:	RKF
DATE DRAFTED:	7/8/19	DATE SURVEYED:	6/19/19
REVISED:		FILE NAME:	17-193