



July 16, 2019

VIA ELECTRONIC TRANSMITTAL

Department of Natural Resources
Oil and Gas Conservation Commission
The Chancery Building
Attn: Jeff Robbins, Director
1120 Lincoln St., Suite 801
Denver, CO 80203

Re: **30-Day Certification Letter – Rule 318A.e**

<u>Well Name</u>	<u>Well Head Location (SHL)</u>			
KBL 1918-01H	1807	FSL	2171	FEL

Dear COGCC Director,

Verdad Resources LLC (Verdad) hereby certifies to the Director that that a thirty (30-day) notice has been given by certified mail to all owners in the proposed 400-acre wellbore spacing unit. The proposed 400-acre wellbore spacing unit for the KBL 1918-01H well consists of:

Township 2N, Range 63W:
Section 18: W2SW4, SWNW
Section 19: W2NW4

Township 2N, Range 64W:
Section 13: E2SE4, SENE
Section 24: E2NE4

We have not received any objections to such well location or proposed spacing unit, there Verdad hereby requests the Director to approve the proposed well.

If you should have any questions or concerns regarding this permit, please contact the undersigned at 720-845-6909.

Sincerely,

A handwritten signature in black ink that reads "Allison Schieber".

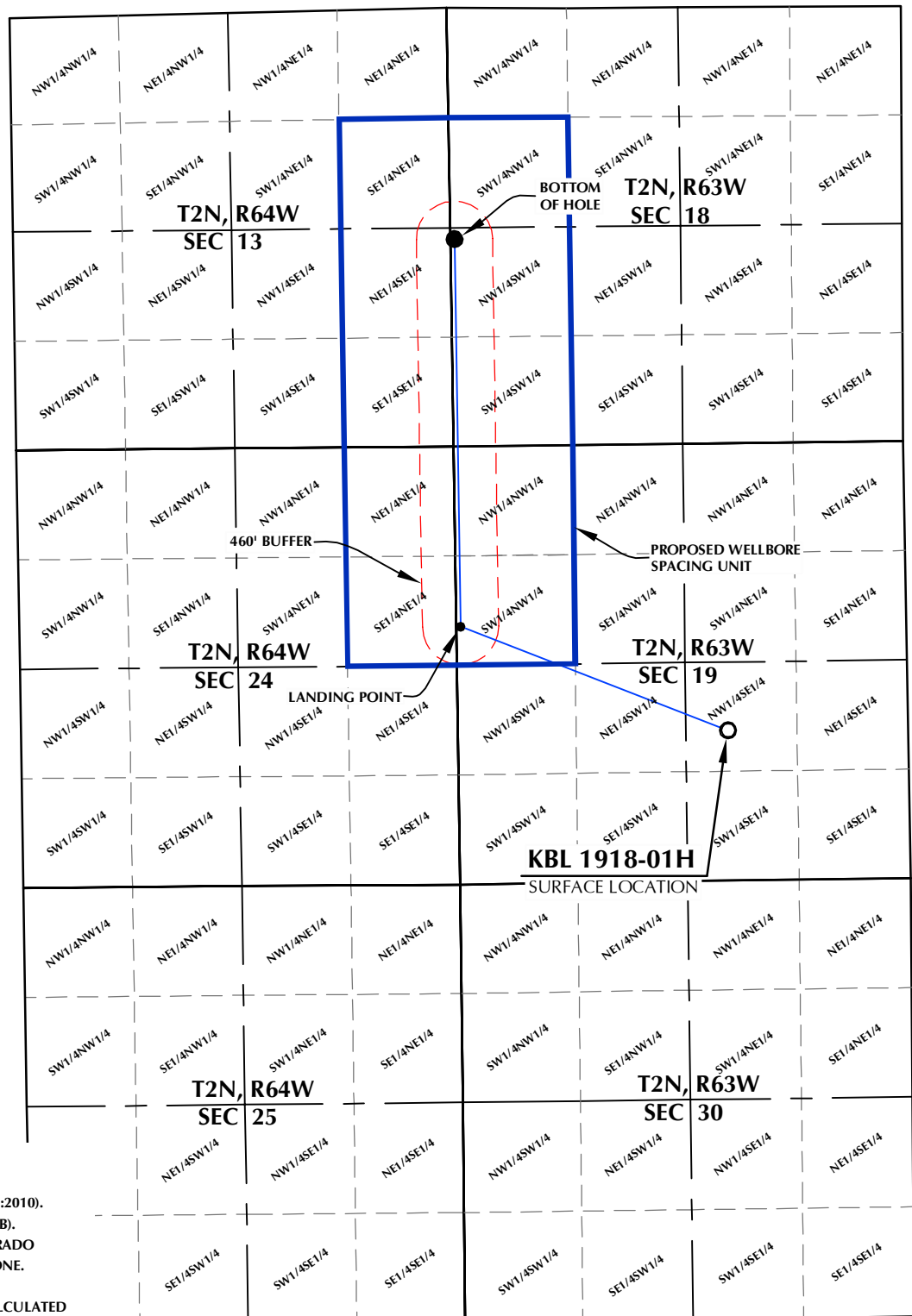
Allison Schieber
Sr. Regulatory Analyst
Verdad Oil and Gas Corporation

SURFACE LOCATION
 GROUND ELEVATION= 4865.7'
 LATITUDE= 40.121610°
 LONGITUDE= -104.478606°
 1/4 1/4: NW1/4 SE1/4

LANDING POINT
 LATITUDE= 40.125149°
 LONGITUDE= -104.490188°
 1/4 1/4: SW1/4 NW1/4

BOTTOM HOLE LOCATION
 LATITUDE= 40.137996°
 LONGITUDE= -104.490188°
 1/4 1/4: NW1/4 SW1/4

KBL 1918-01H WELLBORE SPACING UNIT



NOTES:

1. DRAWING LATITUDE AND LONGITUDE COORDINATES ARE NAD 83 (2011)(EPOCH:2010).
2. ELEVATION BASED ON NAVD88 (GEOID12B).
3. BASIS OF BEARING DERIVED FROM COLORADO COORDINATE SYSTEM OF 1983 NORTH ZONE.
4. ALL MEASURED DISTANCES ARE GRID.
 COMBINED SCALE FACTOR: .99972908 CALCULATED FROM THE NE. CORNER OF SECTION 19, T2N, R63W.

WELL PAD - KBL 02N-63W-19

KBL 1918-01H
 WELLBORE SPACING UNIT
 1807' FSL & 2171' FEL NWSE (SURFACE)
 2180' FNL & 50' FWL LOT 1 (SWNW) (LANDING POINT)
 LOCATED IN SECTION 19
 2500' FSL & 50' FWL LOT 2 (NWSW) (BOTTOM)
 LOCATED IN SECTION 18
 T2N, R63W, 6TH P.M.
 WELD COUNTY, COLORADO



5950 Cedar Springs Road, Suite 200
 Dallas, Texas 75235



CONSULTING, LLC

SHERIDAN OFFICE
 1095 Saberton Avenue
 Sheridan, Wyoming 82801
 Phone 307-674-0609

LOVELAND OFFICE
 6706 North Franklin Avenue
 Loveland, Colorado 80538
 Phone 970-776-4331

DRAFTED BY:	LMO	CHECKED BY:	RKF
DATE DRAFTED:	7/8/19	DATE SURVEYED:	6/19/19
REVISED:		FILE NAME:	17-193