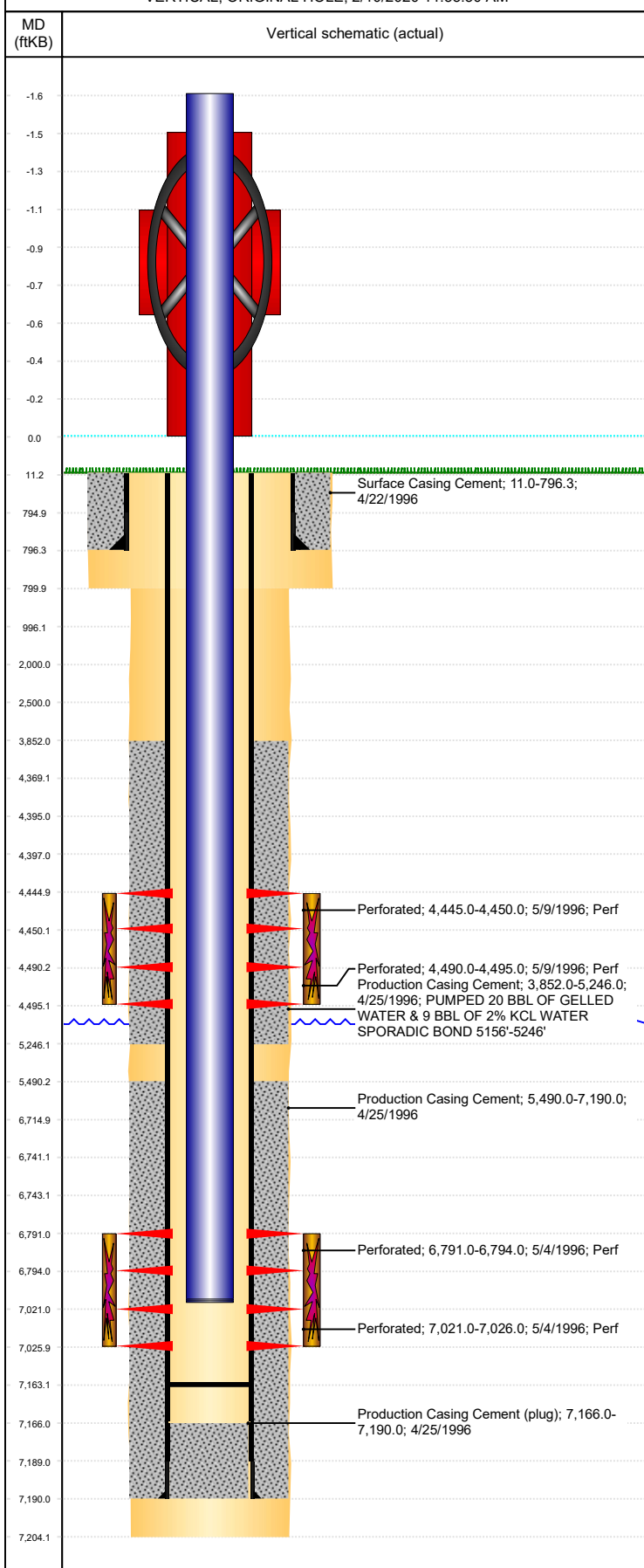


Well Name: WASTE SERVICES 5-34

VERTICAL, ORIGINAL HOLE, 2/10/2020 11:55:50 AM



Well Header									
API 05-123-19137		Business Unit DJ BASIN		District 15		Well Config VERTICAL			
KB - GL / MSL (ft... 11.00		Spud Date 4/21/1996		P & A Date		Well Production Status SI		SoRT No	
Comment SFC CSG DEPTH DISCREPANCY: DRL RPT 796', ST COMP RPT SUBMITTED AS 796' BUT CHANGED TO 807' AFTER SUBMITTAL. REASON UNKNOWN. TD DISCREPANCY: DRL RPT 7175'. ST COMP RPT 7204', PROD CSG DEPTH 7190'									
Surface Location (Congressional)									
Qtr 3 SW	Qtr 4 NW	Section 34	Twنشp 3	Twنشh... N	Range 64	Rng E/... W	Actual Latitude (°) 40.18411800	Actual Longitude (°) -104.54523300	
Wellbore Sections									
Section Des			Size (in)		Act Top, MD (ftKB)		Act Btm, MD (ftKB)		
SURFACE			12 1/4		11		800		
PRODUCTION			7 7/8		800		7,204		
Casing Strings									
Csg Des		Run Date		OD (in)	Wt/Len (lb/ft)	Grade	Top, MD (ftKB)	MD (ftKB)	
Surface		4/22/1996		8 5/8	23.00	J-55	11.0	796.3	
Production		4/24/1996		4 1/2	11.60	NS-75	11.0	7,190.0	
Cement									
Des				Start Date		Top (ftKB)		Btm (ftKB)	
Surface Casing Cement				4/22/1996		11.0		796.3	
Production Casing Cement				4/25/1996		3,852.0		5,246.0	
Production Casing Cement				4/25/1996		5,490.0		7,190.0	
Zone Statuses									
Zone Name	Status Date	Status	Fluid Type	Job				Prod Method	
SUSSEX	5/18/1996	PR	Water	DRILLING/COMPLETION - ORIGINAL, 4/21/1996...				Flowing	
NIOBRARA	5/18/1996	PR		DRILLING/COMPLETION - ORIGINAL, 4/21/1996...					
NIOBRARA	4/22/2014	PR							
CODELL	4/22/2014	PR							
CODELL	3/1/2019	SI							
NIOBRARA-CO...	4/22/2014	PR	Water					Flowing	
Perforation Data									
Linked Zone		Bnch/Stg	Entered Shot Total	Top (ftKB)		Btm (ftKB)		Date	
SUSSEX, ORIGINAL HOLE		B	12	4,445.00		4,450.00		5/9/1996	
SUSSEX, ORIGINAL HOLE			12	4,490.00		4,495.00		5/9/1996	
NIOBRARA, ORIGINAL HOLE			7	6,791.00		6,794.00		5/4/1996	
CODELL, ORIGINAL HOLE			11	7,021.00		7,026.00		5/4/1996	
Stimulation Intervals									
Zone			Start Date		Top (ftKB)		Btm (ftKB)		
SUSSEX, ORIGINAL HOLE			5/10/1996		4,445.0		4,495.0		
NIOBRARA-CODELL, ORIGINAL HOLE			5/6/1996		6,791.0		7,026.0		
Other In Hole									
Run Date		Des				OD (in)	Top (ftKB)	Btm (ftKB)	
Logs									
Date		Type				Top, MD (ftKB)		Btm, MD (ftKB)	
4/24/1996		COMPENSATED DENSITY				4,000.0		7,204.0	
4/24/1996		INDUCTION				807.0		7,204.0	
5/4/1996		CEMENT BOND				3,750.0		7,131.0	
4/28/2017		GYRO				0.0		6,900.0	
Plug Back Total Depths									
Date		Type		Com				Depth (ftKB)	
5/4/1996		FILL		DEPTH LOGGER ON CBL				7,139.0	
5/14/1996		FILL		CLEAN OUT				7,163.0	