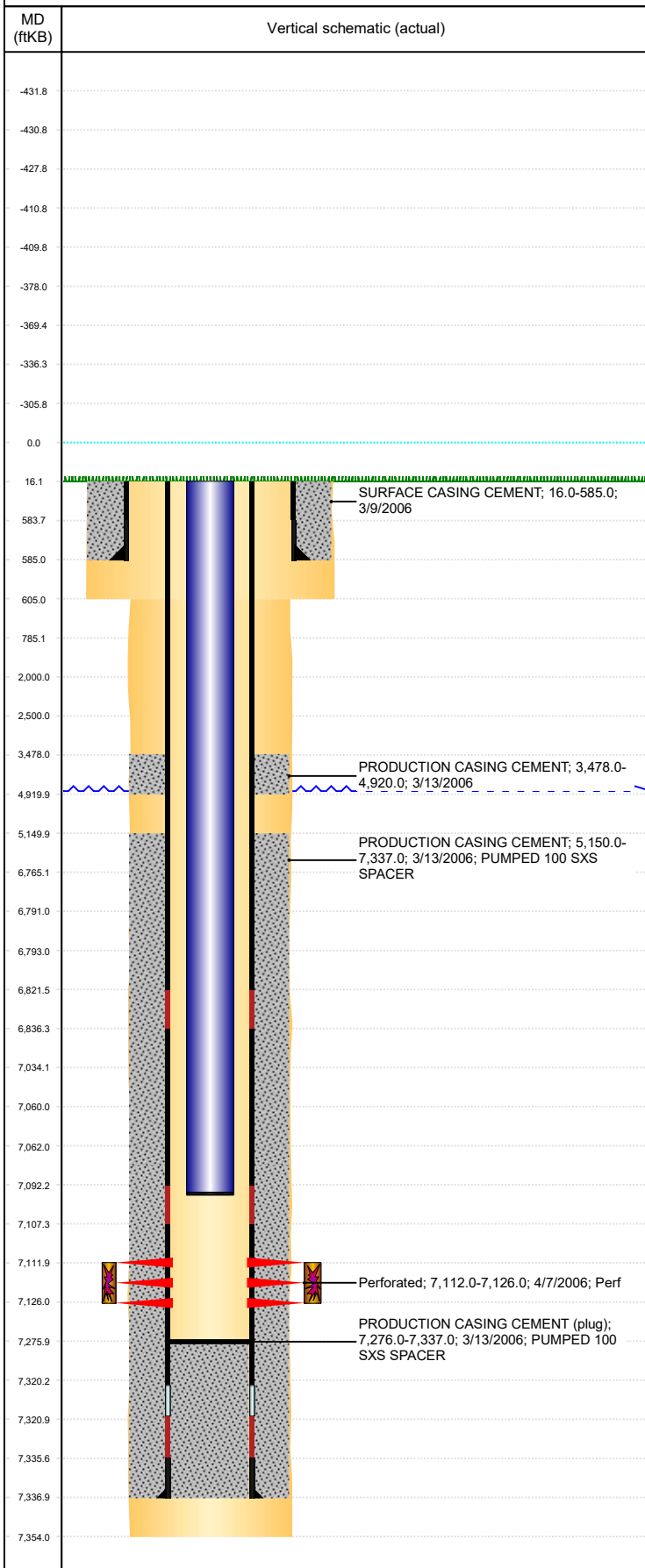


Well Name: SH FARMS C17-03

DEVIATED, ORIGINAL HOLE, 2/10/2020 11:37:48 AM



Well Header									
API 05-123-23007		Business Unit DJ BASIN			District 15		Well Config DEVIATED		
KB - GL / MSL (ft... 16.00		Spud Date 3/9/2006		P & A Date		Well Production Status PR			SoRT No
Comment STATE SHOWS SHUT IN SINCE MAY 2017.									
Surface Location (Congressional)									
Qtr 3 NE	Qtr 4 NW	Section 17	Twnshp 4	Twنش... N	Range 64	Rng E/L... W	Actual Latitude (°) 40.31540600	Actual Longitude (°) -104.57953872	
Wellbore Sections									
Section Des			Size (in)			Act Top, MD (ftKB)		Act Btm, MD (ftKB)	
SURFACE			12 1/4			16		605	
PRODUCTION			7 7/8			605		7,354	
Casing Strings									
Csg Des			Run Date		OD (in)	Wt/Len (lb/ft)	Grade	Top, MD (ftKB)	MD (ftKB)
Surface			3/9/2006		8 5/8	24.00		16.0	585.0
Production			3/13/2006		4 1/2	11.60	M-80	16.0	7,337.0
Cement									
Des					Start Date		Top (ftKB)		Btm (ftKB)
SURFACE CASING CEMENT					3/9/2006		16.0		585.0
PRODUCTION CASING CEMENT					3/13/2006		3,478.0		4,920.0
PRODUCTION CASING CEMENT					3/13/2006		5,150.0		7,337.0
Zone Statuses									
Zone Name		Status Date		Status	Fluid Type		Job		Prod Method
CODELL		4/15/2006		PR	Oil				Flowing
CODELL		2/16/2010		PR	Water				Flowing
Perforation Data									
Linked Zone			Bnch/Stg	Entered Shot Total		Top (ftKB)		Btm (ftKB)	Date
CODELL, ORIGINAL HOLE				56		7,112.00		7,126.00	4/7/2006
Stimulation Intervals									
Zone				Start Date			Top (ftKB)		Btm (ftKB)
CODELL, ORIGINAL HOLE				4/13/2006			7,112.0		7,126.0
Other In Hole									
Run Date		Des				OD (in)	Top (ftKB)		Btm (ftKB)
10/26/2017		Plunger Lift				1 7/8			
Logs									
Date		Type					Top, MD (ftKB)		Btm, MD (ftKB)
3/13/2006		COMPENSATED DENSITY					2,000.0		7,327.0
3/13/2006		INDUCTION					585.0		7,347.0
3/27/2006		CBL/CCL/GR					3,350.0		7,275.0
11/29/2011		GYRO					16.0		7,000.0
Plug Back Total Depths									
Date		Type			Com				Depth (ftKB)
3/13/2006		FLOAT SHOE			FLOAT SHOE W/ BAFFLE				7,321.0
3/27/2006		FILL			DEPTH LOGGER ON CBL				7,276.0