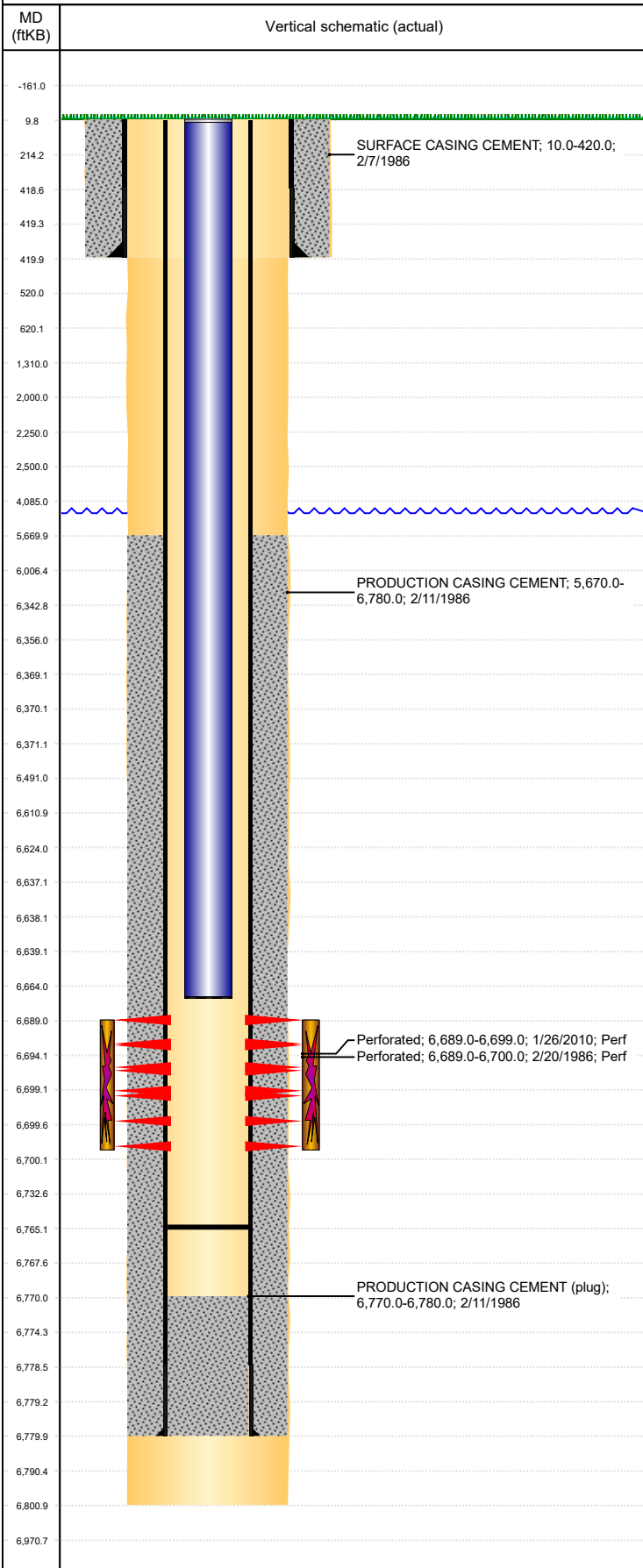


**Well Name: HAPPY TALK 02**

VERTICAL, ORIGINAL HOLE, 2/10/2020 11:05:15 AM



Well Header									
API 05-123-12979		Business Unit DJ BASIN			District 15		Well Config VERTICAL		
KB - GL / MSL (ft... 10.00		Spud Date 2/7/1986		P & A Date		Well Production Status PR			SoRT No
Comment									
Surface Location (Congressional)									
Qtr 3 SE	Qtr 4 SW	Section 1	Twnshp 4	Twnsh... N	Range 64	Rng E/... W	Actual Latitude (°) 40.33620735	Actual Longitude (°) -104.50113458	
Wellbore Sections									
Section Des			Size (in)			Act Top, MD (ftKB)		Act Btm, MD (ftKB)	
SURFACE			12 1/4			10		420	
PRODUCTION			7 7/8			420		6,801	
Casing Strings									
Csg Des			Run Date		OD (in)	Wt/Len (lb/ft)	Grade	Top, MD (ftKB)	MD (ftKB)
Surface			2/7/1986		8 5/8	24.00	J-55	10.0	420.0
Production			2/11/1986		4 1/2	10.50	J-55	10.0	6,780.0
Cement									
Des					Start Date		Top (ftKB)		Btm (ftKB)
SURFACE CASING CEMENT					2/7/1986		10.0		420.0
PRODUCTION CASING CEMENT					2/11/1986		5,670.0		6,780.0
Zone Statuses									
Zone Name	Status Date	Status	Fluid Type	Job				Prod Method	
CODELL	3/30/2010	PR	Gas	RE-FRAC, 1/25/2010 06:00				Flowing	
CODELL	7/16/2010	PR	Water						
Perforation Data									
Linked Zone			Bnch/Stg	Entered Shot Total	Top (ftKB)		Btm (ftKB)		Date
CODELL, ORIGINAL HOLE				12	6,689.00		6,700.00		2/20/1986
CODELL, ORIGINAL HOLE				40	6,689.00		6,699.00		1/26/2010
Stimulation Intervals									
Zone				Start Date		Top (ftKB)		Btm (ftKB)	
CODELL, ORIGINAL HOLE				2/25/1986		6,689.0		6,700.0	
CODELL, ORIGINAL HOLE				2/12/2010		6,689.0		6,700.0	
Other In Hole									
Run Date		Des				OD (in)	Top (ftKB)		Btm (ftKB)
4/25/2018		Plunger Lift				1 7/8			
Logs									
Date		Type				Top, MD (ftKB)		Btm, MD (ftKB)	
2/10/1986		Compensated Density				2,600.0		6,799.0	
2/10/1986		Induction				420.0		6,799.0	
2/17/1986		Cement Bond				5,530.0		6,744.0	
3/23/2011		GYRO				10.0		6,600.0	
Plug Back Total Depths									
Date		Type			Com				Depth (ftKB)
1/26/2010		FILL			TBG TALLY MEASUREMENT.				6,775.0
2/18/2010		FILL			C/O TO 6765' KB				6,765.0