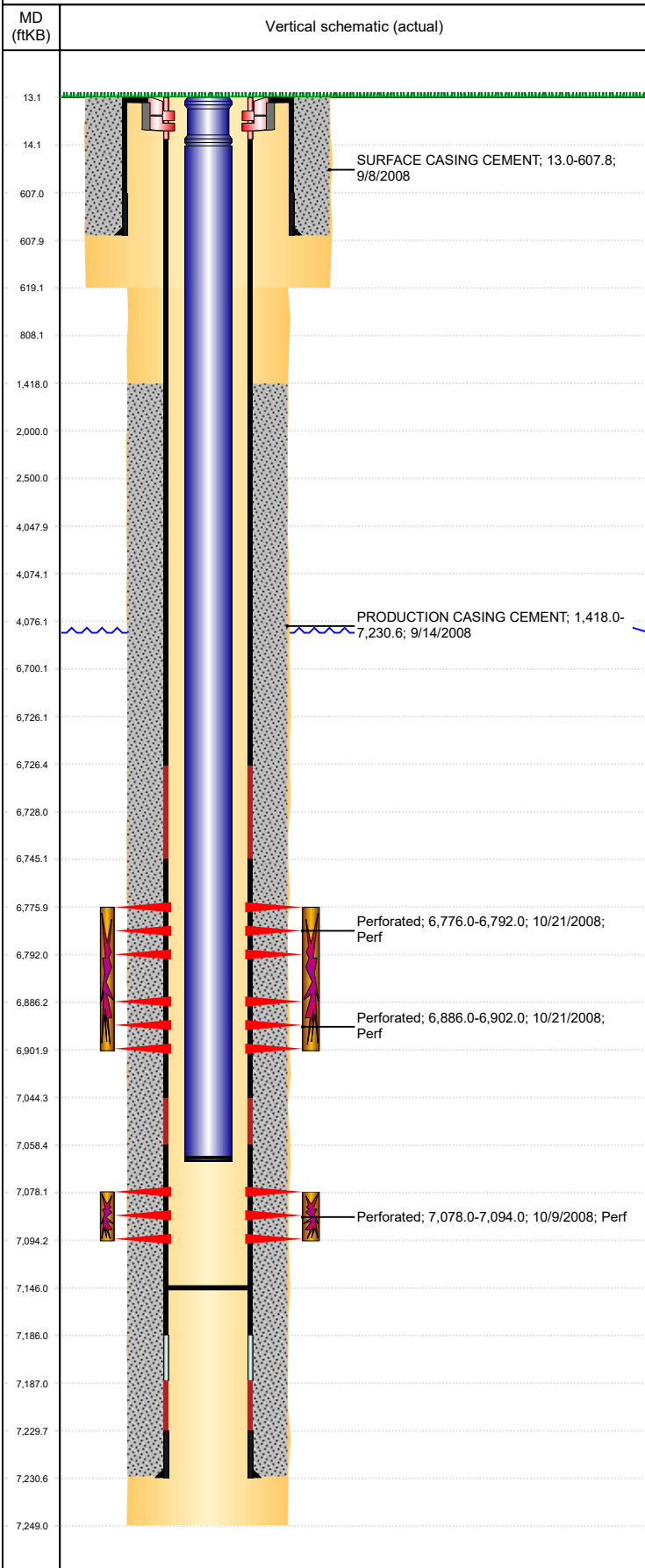


**Well Name: USED G02-21**

DEVIATED, ORIGINAL HOLE, 2/9/2020 2:48:24 PM



Well Header									
API 05-123-25519		Business Unit DJ BASIN		District 15		Well Config DEVIATED			
KB - GL / MSL (ft... 13.00		Spud Date 9/8/2008		P & A Date		Well Production Status SI		SoRT No	
Comment 318A.e. LOCATION! BHL ON PERMIT IS INCORRECT. REGULATORY SUBMITTED SUNDRY TO COGCC. PLAT HAS CORRECT BHL!									
Surface Location (Congressional)									
Qtr 3 NW	Qtr 4 SE	Section 2	Twnshp 4	Twnsh... N	Range 65	Rng E... W	Actual Latitude (°) 40.34043333	Actual Longitude (°) -104.62769166	
Wellbore Sections									
Section Des		Size (in)		Act Top, MD (ftKB)		Act Btm, MD (ftKB)			
SURFACE		12 1/4		13		619			
PRODUCTION		7 7/8		619		7,249			
Casing Strings									
Csg Des		Run Date		OD (in)	Wt/Len (lb/ft)	Grade	Top, MD (ftKB)	MD (ftKB)	
Surface		9/3/2008		8 5/8	24.00	J-55	13.0	607.8	
Production		9/14/2008		4 1/2	11.60	M-80	13.0	7,230.6	
Cement									
Des		Start Date		Top (ftKB)		Btm (ftKB)			
SURFACE CASING CEMENT		9/8/2008		13.0		607.8			
PRODUCTION CASING CEMENT		9/14/2008		1,418.0		7,230.6			
Zone Statuses									
Zone Name	Status Date	Status	Fluid Type	Job			Prod Method		
CODELL	8/13/2014	TA		HORIZONTAL WELL PREP, 8/8/2014 12:00					
CODELL	8/4/2015	PR		HORIZONTAL WELL PREP, 8/8/2014 12:00					
NIOBRARA	2/4/2010	PR	Water				Flowing		
NIOBRARA	3/10/2017	SI							
Perforation Data									
Linked Zone		Bnch/Stg	Entered Shot Total	Top (ftKB)	Btm (ftKB)	Date			
NIOBRARA, ORIGINAL HOLE		A	32	6,776.00	6,792.00	10/21/2008			
NIOBRARA, ORIGINAL HOLE		B	32	6,886.00	6,902.00	10/21/2008			
CODELL, ORIGINAL HOLE		01	64	7,078.00	7,094.00	10/9/2008			
Stimulation Intervals									
Zone		Start Date		Top (ftKB)		Btm (ftKB)			
NIOBRARA, ORIGINAL HOLE		10/21/2008		6,776.0		6,902.0			
CODELL, ORIGINAL HOLE		10/21/2008		7,078.0		7,094.0			
Other In Hole									
Run Date		Des		OD (in)	Top (ftKB)	Btm (ftKB)			
7/12/2016		Plunger Lift		1 7/8					
Logs									
Date		Type			Top, MD (ftKB)	Btm, MD (ftKB)			
9/30/2008		CBL/CCL/GR/VDL			4,000.0	7,147.0			
9/30/2008		PULSED NEUTRON			150.0	7,154.0			
10/9/2008		PERFORATION			7,078.0	7,094.0			
9/19/2013		GYRO			13.0	7,000.0			
Plug Back Total Depths									
Date		Type	Com			Depth (ftKB)			
8/8/2014						7,152.0			
8/3/2015		PLUG REMNANTS	52' OF RAT HOLE			7,146.0			