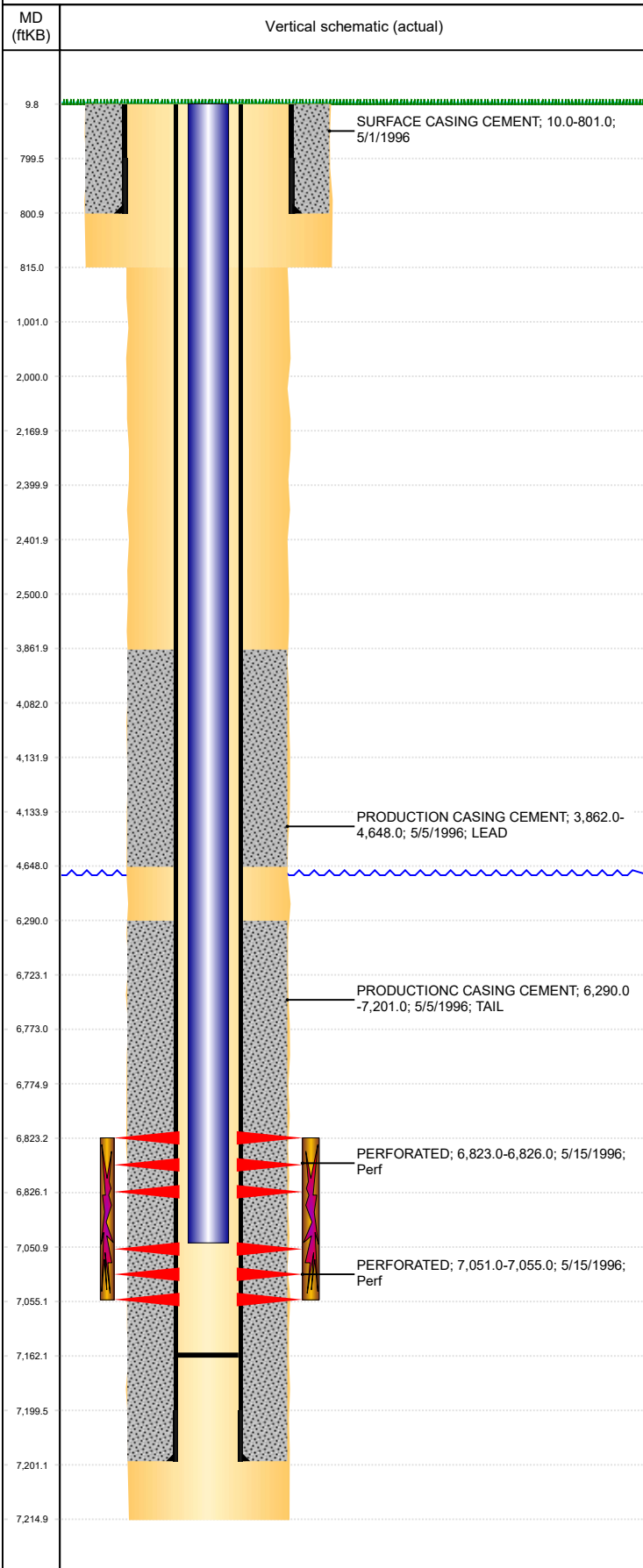


Well Name: GUTTERSEN 3-4

VERTICAL, ORIGINAL HOLE, 2/9/2020 2:44:44 PM



Well Header									
API 05-123-19152		Business Unit DJ BASIN		District 15		Well Config VERTICAL			
KB - GL / MSL (ft... 10.00		Spud Date 5/1/1996		P & A Date		Well Production Status PR			SoRT No
Comment LIMITED ENTRY. CEMENT COVERAGE SKETCHY, REFER TO CBL. CARTE SHOWS NOT PRODUCING. ??? INSERT @ 7170'.									
Surface Location (Congressional)									
Qtr 3 NE	Qtr 4 NW	Section 4	Twonshp 2	Twonsh... N	Range 64	Rng E/... W	Actual Latitude (°) 40.17273520	Actual Longitude (°) -104.55905990	
Wellbore Sections									
Section Des			Size (in)			Act Top, MD (ftKB)		Act Btm, MD (ftKB)	
SURFACE			12 1/4			10		815	
PRODUCTION			7 7/8			815		7,215	
Casing Strings									
Csg Des		Run Date		OD (in)	Wt/Len (lb/ft)	Grade	Top, MD (ftKB)	MD (ftKB)	
Surface		5/1/1996		8 5/8	23.00		10.0	801.0	
Production		5/5/1996		3 1/2	7.70	I-70	10.0	7,201.0	
Cement									
Des				Start Date		Top (ftKB)		Btm (ftKB)	
SURFACE CASING CEMENT				5/1/1996		10.0		801.0	
PRODUCTION CASING CEMENT				5/5/1996		3,862.0		4,648.0	
PRODUCTIONC CASING CEMENT				5/5/1996		6,290.0		7,201.0	
Zone Statuses									
Zone Name		Status Date	Status	Fluid Type	Job			Prod Method	
NIOBRARA		6/6/1996	PR		DRILLING/COMPLETION - ORIGINAL, 5/1/1996...			Flowing	
CODELL		6/6/1996	PR		DRILLING/COMPLETION - ORIGINAL, 5/1/1996...			Flowing	
Perforation Data									
Linked Zone		Bnch/Stg	Entered Shot Total	Top (ftKB)		Btm (ftKB)		Date	
NIOBRARA, ORIGINAL HOLE			7	6,823.00		6,826.00		5/15/1996	
CODELL, ORIGINAL HOLE			10	7,051.00		7,055.00		5/15/1996	
Stimulation Intervals									
Zone				Start Date		Top (ftKB)		Btm (ftKB)	
NIOBRARA-CODELL, ORIGINAL HOLE				5/16/1996		6,823.0		7,055.0	
Other In Hole									
Run Date		Des				OD (in)	Top (ftKB)		Btm (ftKB)
Logs									
Date		Type				Top, MD (ftKB)		Btm, MD (ftKB)	
5/5/1996		COMPENSATED DENSITY				4,300.0		7,210.0	
5/5/1996		INDUCTION				850.0		7,211.0	
5/10/1996		CEMENT BOND				3,770.0		7,136.0	
9/13/2016		GYRO				0.0		7,000.0	
Plug Back Total Depths									
Date		Type		Com				Depth (ftKB)	
5/10/1996		FILL		LOGGER DEPTH NA ON CBL					
5/23/1996		FILL		CLEANED TO PBTD @ 7162'				7,162.0	